

# *How to get from hotels to IFIC*

## **From “Ayre Hotel Astoria Palace” and “Hotel Venecia”:**

### *Option 1:*

From Xàtiva station or Colon Station to Angel Guimerà station: Line 3 (subway)

From Angel Guimerà station to Empalme station: Line 1 (subway)

From Empalme station to Tvv station: Line 6 (Tram)

### *Option 2:*

Walk to Angel Guimera

From Angel Guimerà station to Empalme station: Line 1 (subway)

From Empalme station to Tvv station: Line 6 (Tram)

### *Option 3:*

From Xàtiva station to Vicent Andrés Estellés: Line 63 (Bus)

From Vicent Andrés Estellés to IFIC you must walk.

## **From “Colegio Mayor Rector Peset”:**

From Pont de Fusta station to Tvv station: Line 6 (Tram)

# FROM TVV tram station to IFIC (3 min walk)



Main entrance

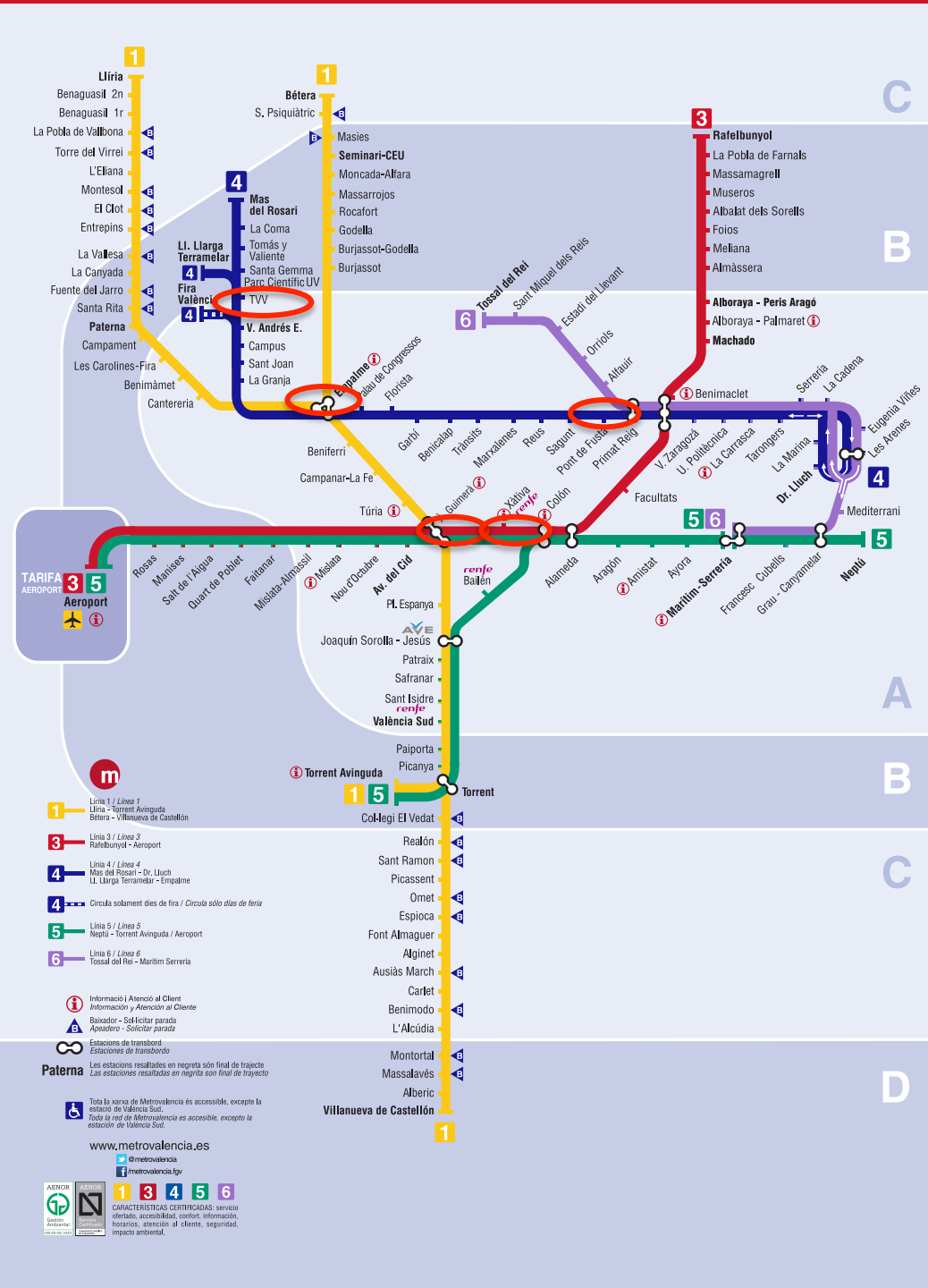
"Tvv" tram station

- 1. Registration desk
- 2. Auditorium (Floor 1)
- 3. Laboratories Building (Floor 1)
- 4. IFIC Main Building (Floor -1,0,1)

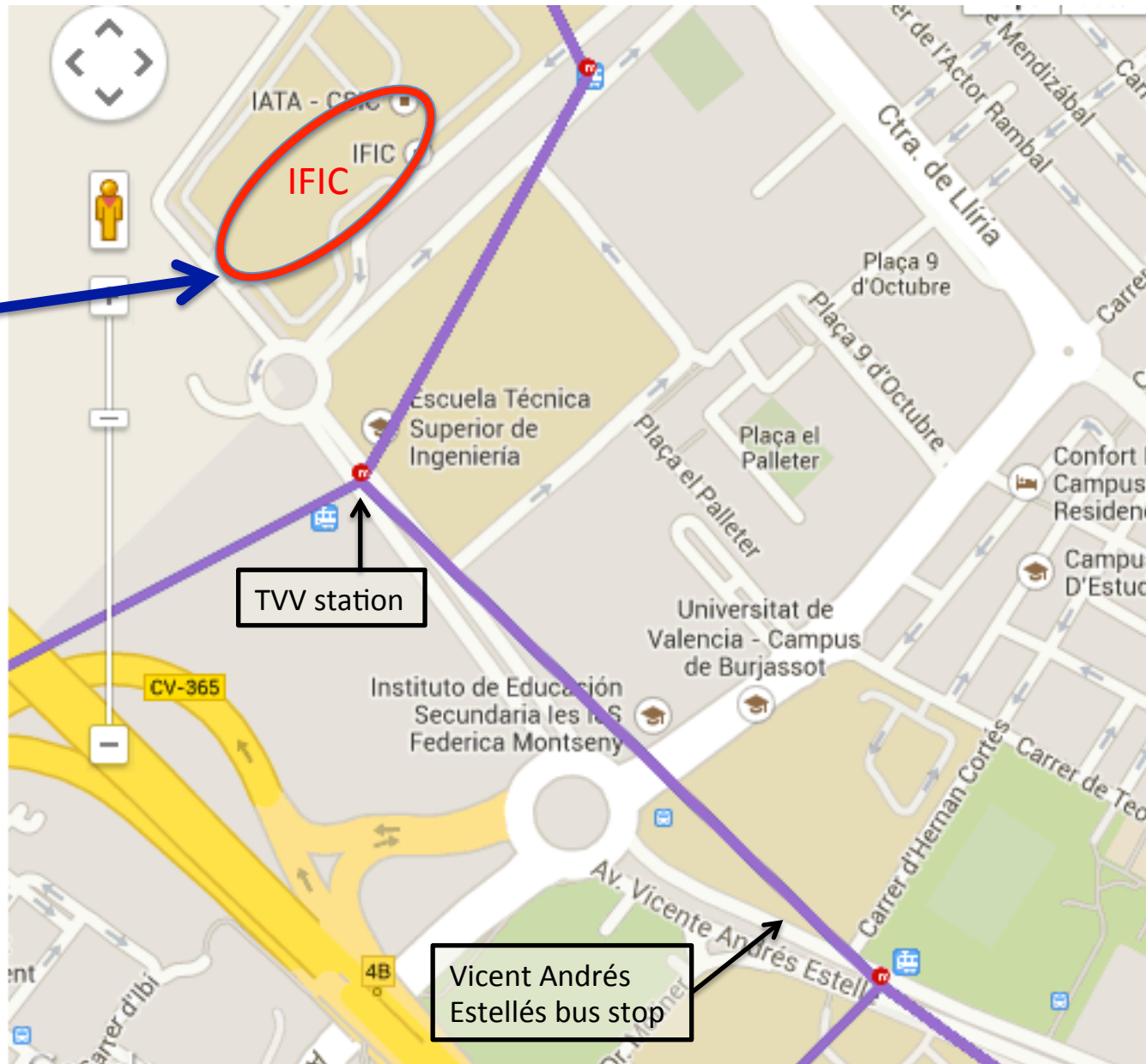
# FROM MAIN HOTEL TO METRO STATIONS (15-20 min walk)



# Key metro and tram stations



# FROM BUS STATION VICENT ANDRES ESTELLES TO IFIC (20 min walk)

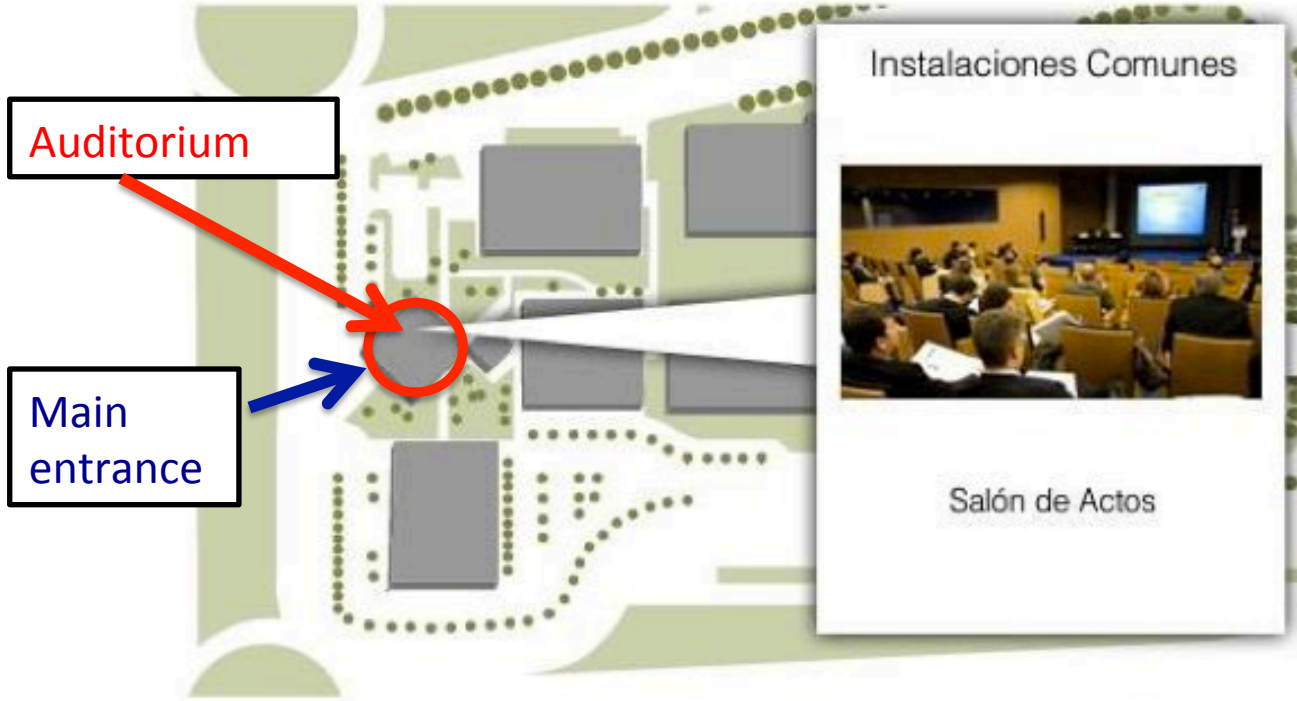


Main entrance

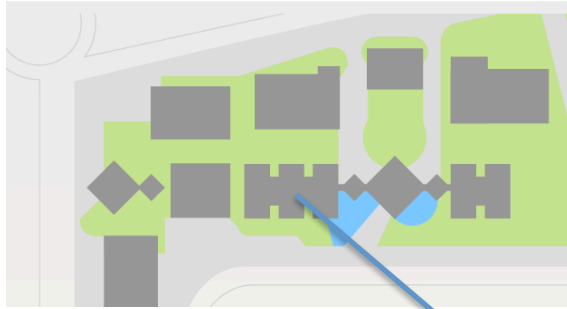
TVV station

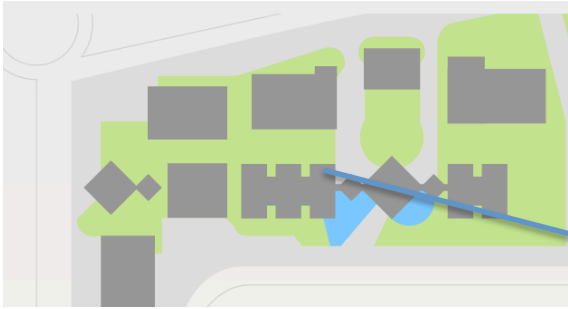
Vicent Andrés Estellés bus stop

# Auditorium 1<sup>st</sup> Floor

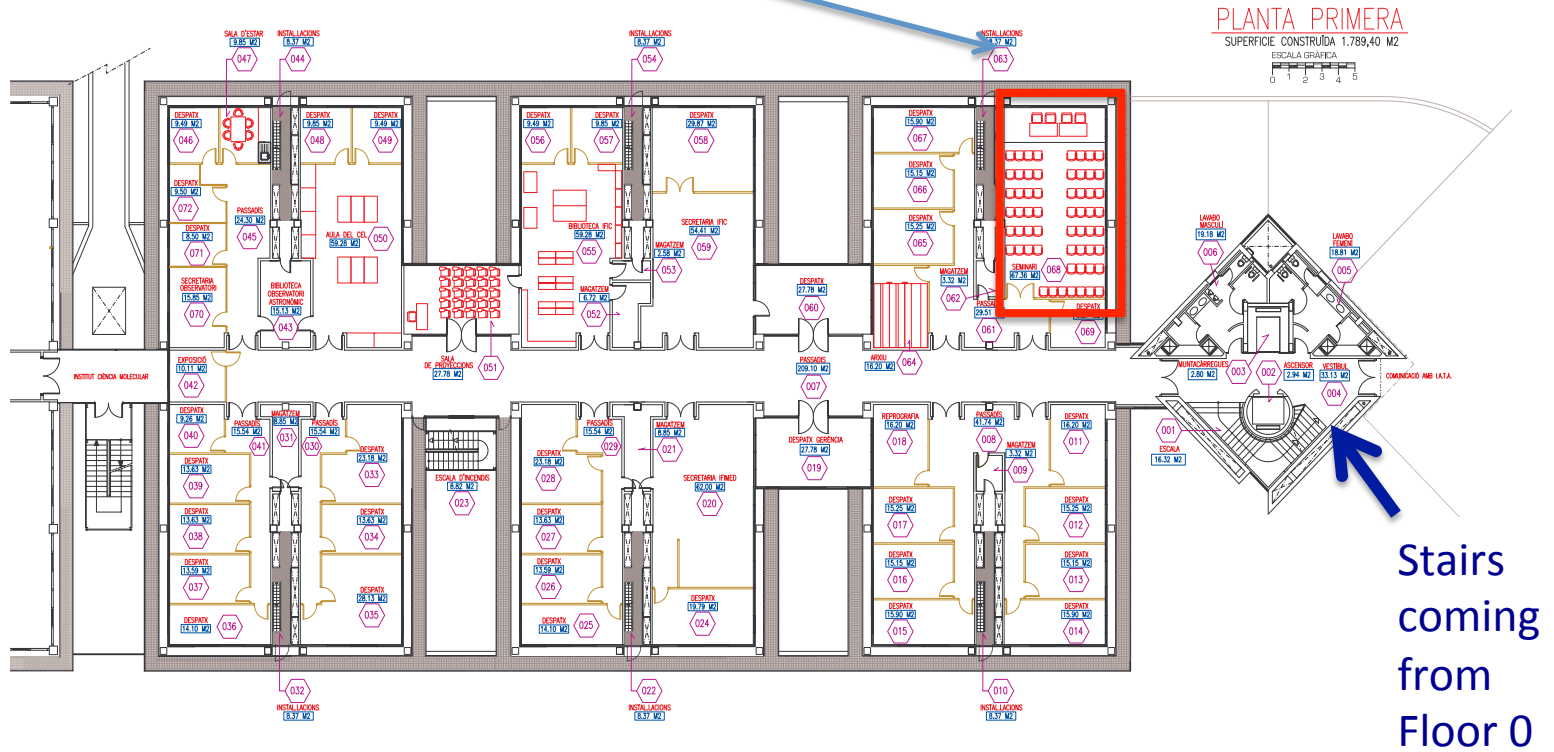


# Room B-2 (Sala de juntas) IFIC Main Building - Floor 0

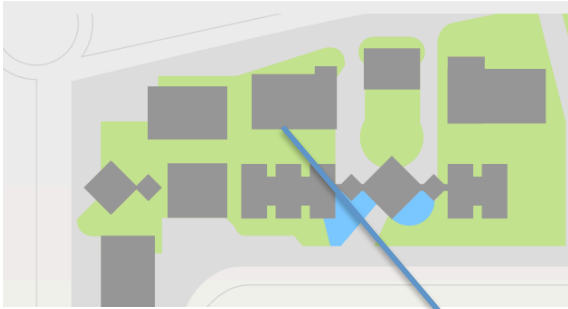




# Room 1-1-1 (IFIC Seminar) IFIC Main Building Floor 1







# Room 119 (sala de reuniones) Laboratories Building Floor 1



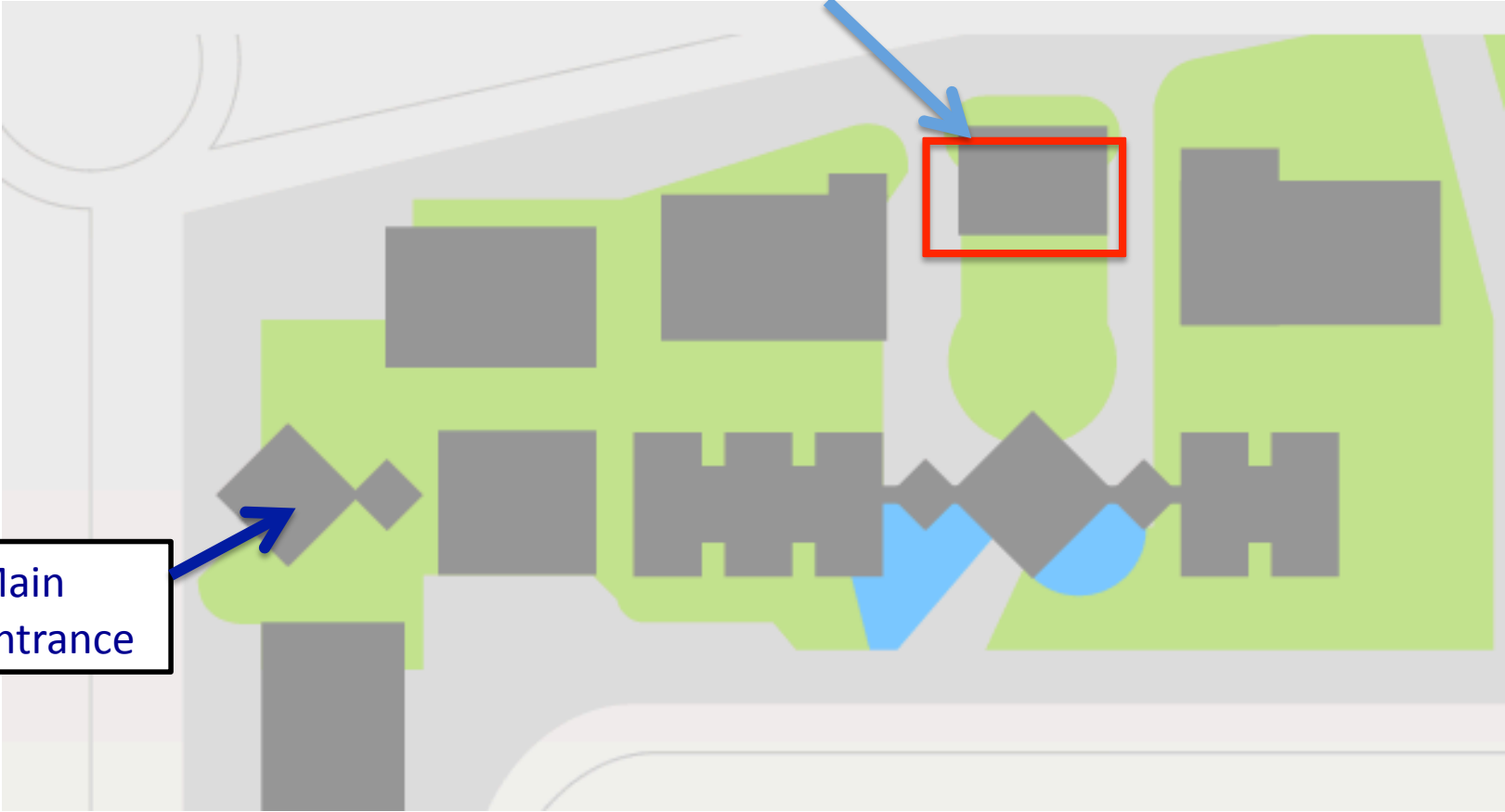
## PLANTA PRIMERA

SUPERFICIE CONSTRUÏDA 1.534,50 M<sup>2</sup>

ESCALA GRÀFICA  
0 1 2 3 4 5

Stairs  
coming  
from  
Floor 0

CAFETERIA



Main entrance