

ExtreMe Matter Institute EMMI

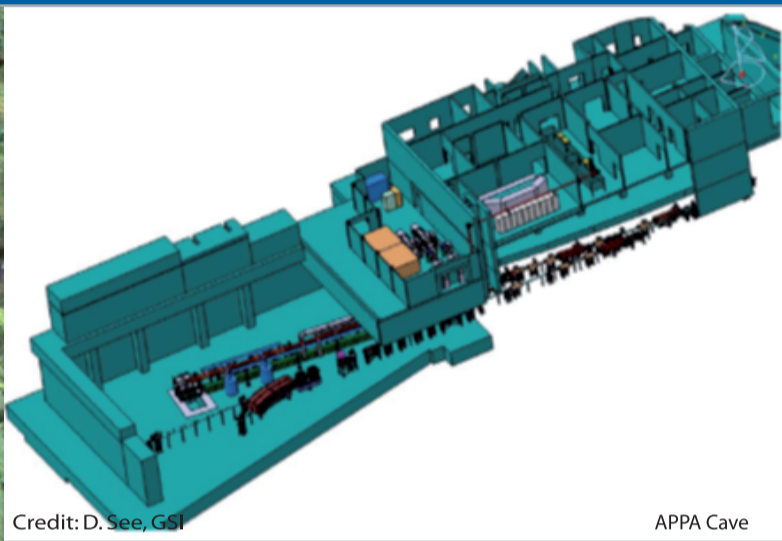
EMMI Workshop

Plasma Physics at FAIR

July 11-13, 2016, GSI, Darmstadt, Germany



FAIR & GSI



Credit: D. See, GSI

APPA Cave



Proton Microscope

Credit: G. Otto, GSI

Workshop topics

- Physics of High Energy Density (HED) States: Theory, Experiments, Diagnostics
- EOS of Matter under Extreme Conditions
- Energy transport in Warm Dense Matter
- Status of HED Research at Facilities World Wide
- Atomic Processes in Strongly Coupled Plasmas
- Laser Based Photon and Particle Sources for HED/WDM-Diagnostics
- Materials Research and Biophysics related to Plasma Physics

International advisory committee

N. Andreev, JIHT, Russia
D. Batani, CELIA, France
C. Deutsch, Uni Paris-Sud 11, France
D. Gericke, U. Warwick, UK
A. Golubev, ITEP, Russia
V. Lisitsa, Kurchatov Institute, Russia
T. Mehlhorn, NRL, USA
V. Mintsev, IPCP RAS, Russia,
D. Riley, QUB, UK
K. Schoenberg, Los Alamos, USA
V. Tikhonchuk, Uni Bordeaux, CELIA, France

Local organizers

Vincent Bagnoud, GSI
Abel Blazevic, GSI
Paul Neumayer, GSI
Dieter H. H. Hoffmann, TUD
Thomas Kühl, GSI
Stefan Neff, FAIR
Olga Rosmej, GSI
Markus Roth, TUD
Dennis Schumacher, GSI
Dmitry Varentsov, GSI
Karin Weyrich, GSI

Information & Registration

<http://www.gsi.de/emmi/workshops>

More about EMMI

www.gsi.de/emmi