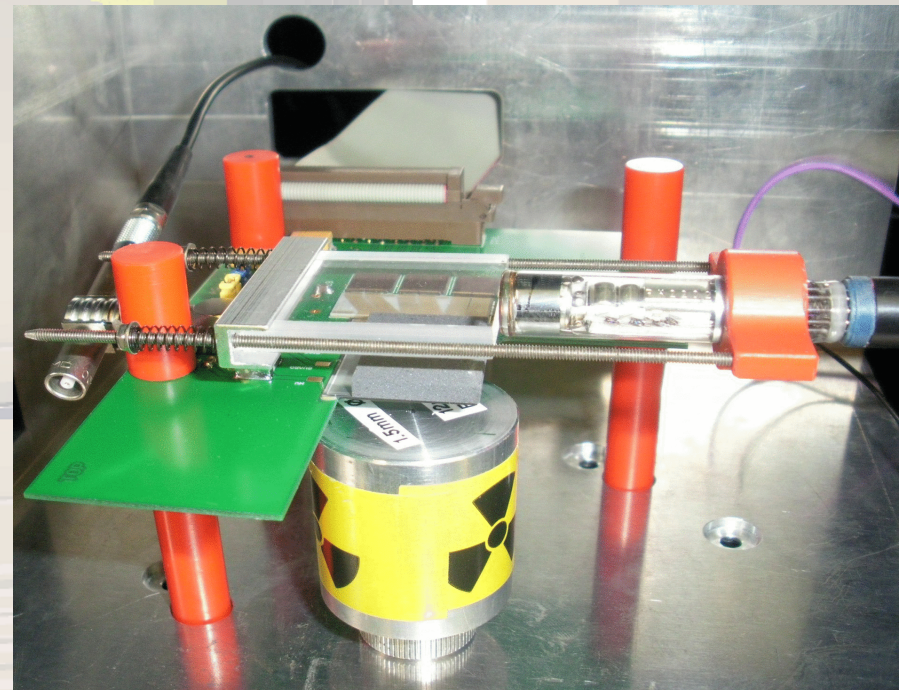
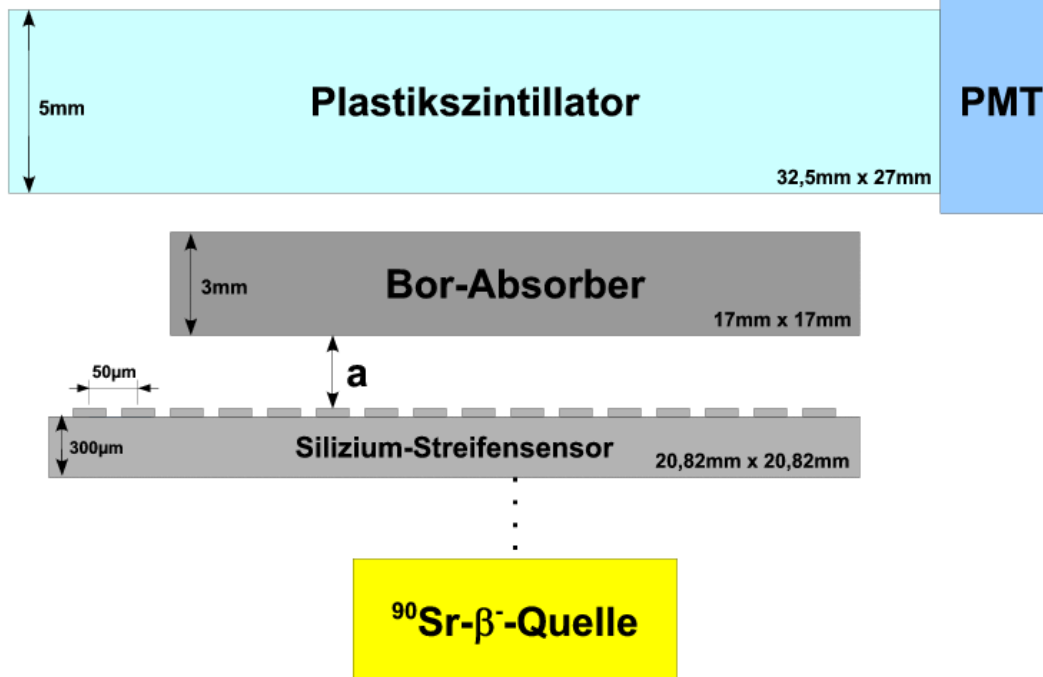
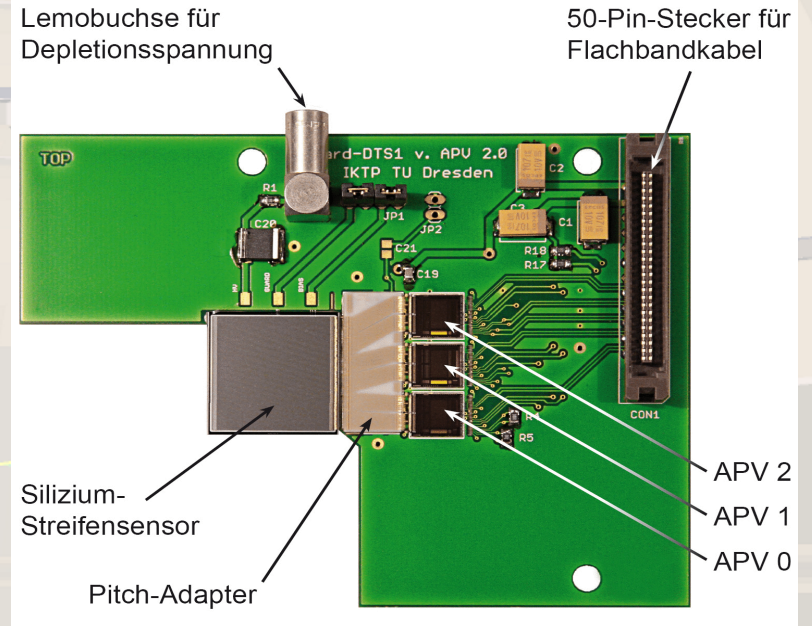


# Setup of the Test-Station

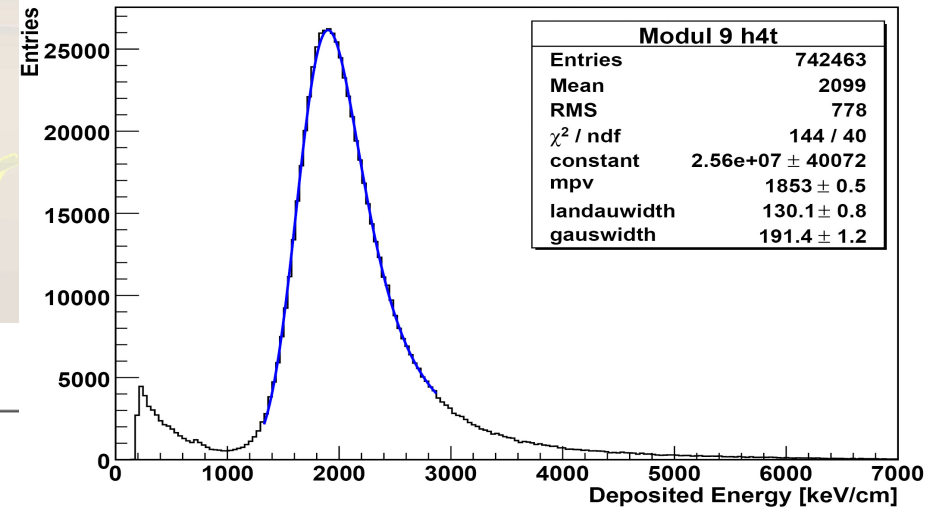
## Si-Strip-Detector:

- 20 x 20 mm<sup>2</sup>
- Thickness 300  $\mu$ m
- 384 Strips
- Pitch 50  $\mu$ m
- Readout of the p-side with 3 APV25-S1 Chips
- Not radiation hard

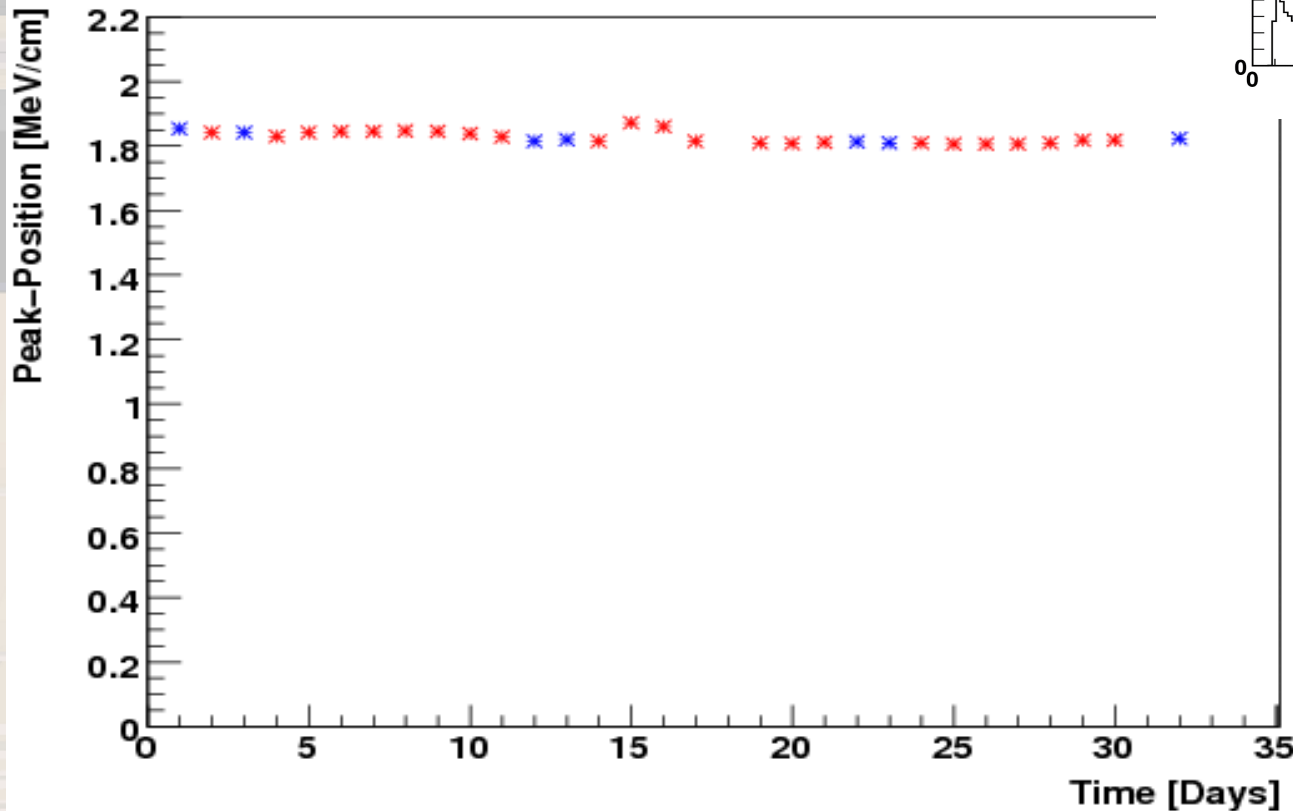


# Measurements and Results

Histogram of a 23-hours energy loss measurement, peak fitted with convoluted Landau-Gauß-distribution



Peakpositions on 32 days of measurement



- blue points for days with a sensor-absorber-gap of about 4mm
- red points for days without a sensor-absorber-gap

# Measurements and Results

Fitparameters for exponential decay

- $a$  = constant
- $b$  = decay parameter

Analysis of the pulshshape for one selected strip

- days 8 - 11 with direct sensor-absorber-contact
- days 12 and 13 with sensor-absorber-gap of 4 mm

