
Status of works on barrel mechanics at IHEP

Andrey Ryazantsev

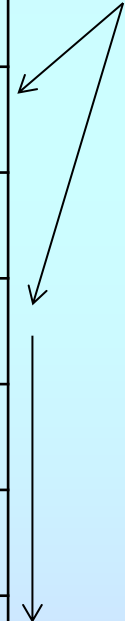
on behalf of the NRC “Kurchatov Institute” – IHEP Protvino group

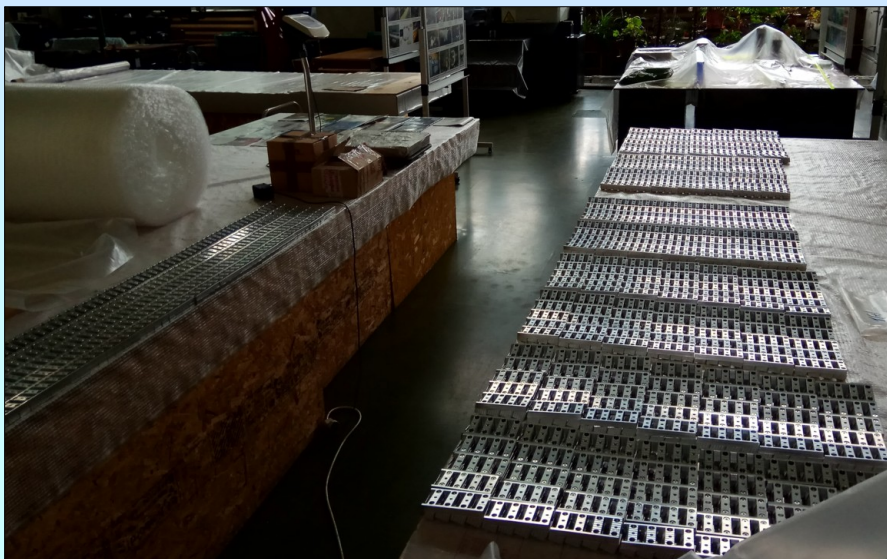
Milestone	Work Description	Prerequisites to start work/ procurement	Validation Criteria	Date
Pre-Series Slice				
1.6 M8	Testing of Pre-Series Slice	1.5	SAT Ab for mechanics of Pre-Series Slice	Aug 2017
Full System				
2.1 M6	Finalise technical specifications for complete Barrel EMC Mechanics	1.6	Technical specifications	Sep 2017
2.2 M7	Develop design documentation for complete Barrel EMC Mechanics	0.0	Final Design Review allowing for series production	Oct 2017
2.3 MX1	Production and delivery of batch 1.1 of the Barrel EMC Mechanics (BEM-B1.1)	2.2	SAT Aa for BEM-B1.1	Nov 2017
2.4 MX1	Production and delivery of batch 1.2 of the Barrel EMC Mechanics (BEM-B1.2)	2.2	SAT Aa for BEM-B1.2	Sep 2018
2.5 MX1	Production and delivery of batch 2.1 of the Barrel EMC Mechanics (BEM-B2.1)	2.2	SAT Aa for BEM-B2.1	June 2019
2.6 M9	Production and delivery of all remaining (batch 2.2) Barrel EMC Mechanics (BEM-B2.2)	2.2	SAT Aa for BEM-B2.2	Nov 2019
2.7 M10	Participation in the assembly of the Barrel EMC Mechanics	2.3	SAT Ba for complete Barrel EMC Mechanics	Dec 2020

Work is in progress, delay is not due to IHEP

Exceptional case, Design was fixed

One year is strictly defined: components can't be produced faster.





2017 – December – 22



November, 2017 - delivered to Giessen

- BEM-B1.1: rear inserts and intermediate plates for modules from 3(-) through 3(+) for 14 slices. *Delivered*
- BEM-B1.2: 18 assembling devices, all alveoli packs with all other rear inserts and intermediate plates. *Delivery will be shifted in time – not earlier than March 2019:*
 - *Temporary exported to Germany assembling devices are not returned yet to IHEP. They are necessary to start mass production of alveoli packs at IHEP;*
 - *design approval of rear inserts and intermediate plates is not yet received from FAIR*
- BEM-B2.1: two support rings, all support beams, support feet and module plates;
Waiting for design approval - new date of delivery will be defined later. There is a dependence on the design of cooling system (out of IHEP responsibility).
- BEM-B2.2: all technological beams and various devices which are necessary for the barrel assembling.
Main scenario of Barrel EMC assembly and integration was developed in general but not approved. Study of staged approach delays mainstream.

2.2 M7	Develop design documentation for complete Barrel EMC Mechanics	0.0	Final Design Review allowing for series production	Apr 2016
2.3 MX1	Production and delivery of batch 1 of the Barrel EMC Mechanics (BEM-B1)	2.2	SAT Aa for BEM-B1	Jan 2017
2.4 M9	Production and delivery of all remaining (batch 2) Barrel EMC Mechanics (BEM-B2)	2.2	SAT Aa for BEM-B2	Oct 2017
2.5 M10	Participation in the assembly of the Barrel EMC Mechanics	2.3	SAT Ba for complete Barrel EMC Mechanics	June 2018

- **Study of staged approach of Barrel EMC integration – presented by Valeriy Ferapontov;**
- **Preparation of single alveoli units for gluing in packs;**
- **Preliminary negotiations with a company which will produce rear inserts and intermediate plates;**
- **Edition of EDMS documentation, etc.**

and ...

Waiting for a good news from our German collaborators.

