



# Status of PASTA Boards

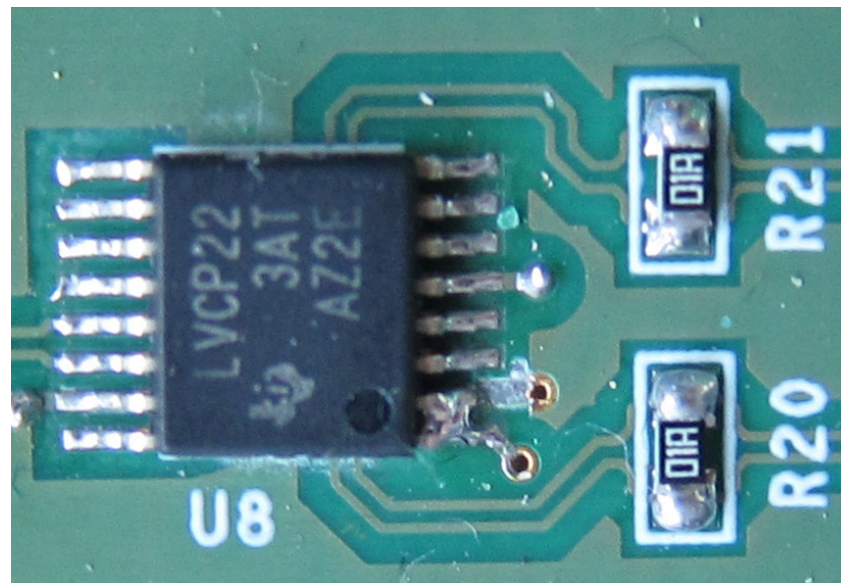
Tommaso Quagli for the MVD Group  
II. Physikalisches Institut, JLU Gießen

# PASTA Board: the DISH

- Current Status
- Perspectives

# PASTA Board: the DISH

- DISH: Digital Interface for Strip data Handling
- Delivered in April, first six boards bonded in Torino (details in the next slides)
- Board and chip user's guides available
- On two boards the chip was damaged during assembly and was replaced
- First modifications required:
  1. DVDDIO supply circuit modified to provide 1.9 V instead of 2.5 V
  2. Selection pins exchanged on three ICs, small workaround found

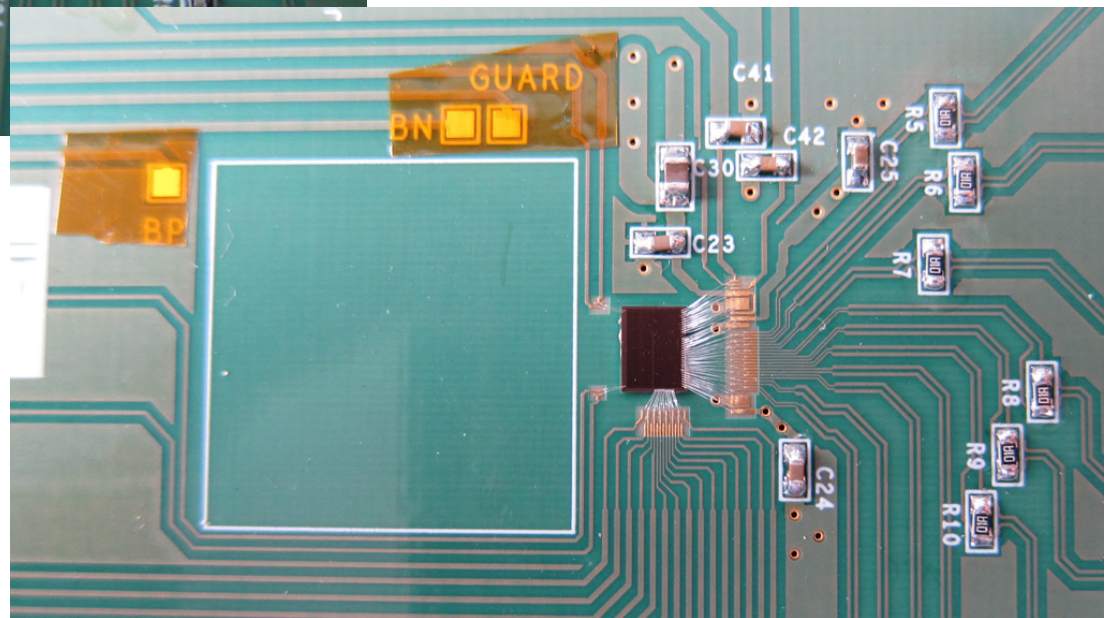
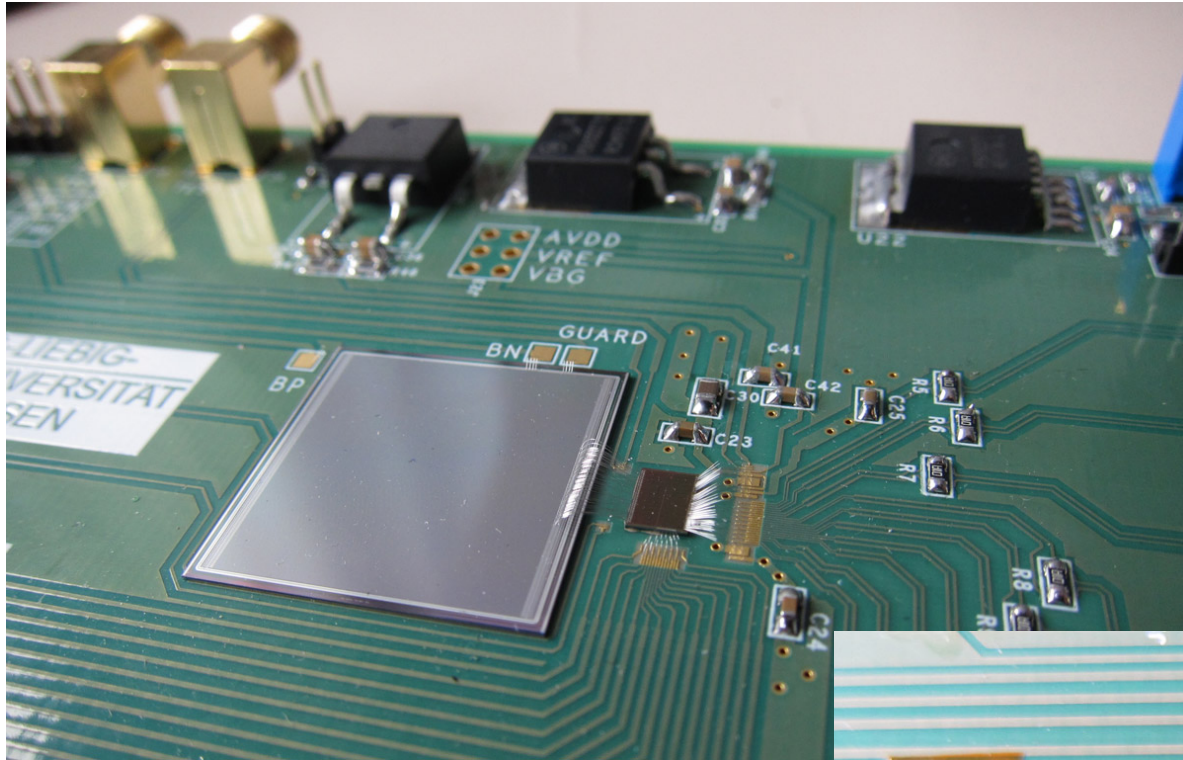


# Available DISHes

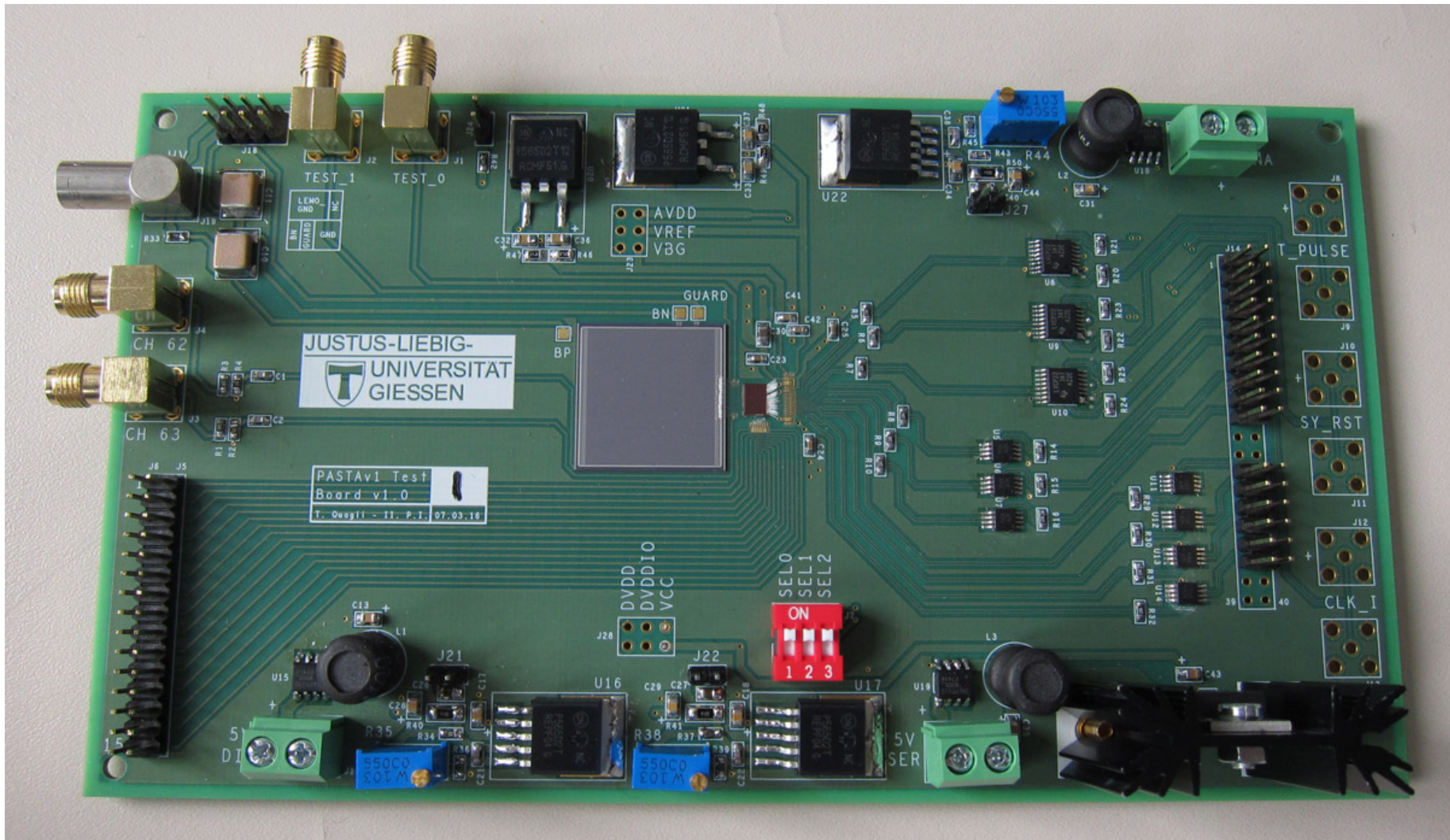
Board	Damaged chip*	Sensor	Location
Bd 1	X	X	Gießen
Bd 2	X		Gießen
Bd 3	X		Jülich
Bd 4			Gießen
Bd 5			Jülich
Bd 6		X	GSI

\* boards where PASTA was possibly damaged during powering tests before discovering a harmful diode connection between the DVDDIO and DVDD power rails

# Available DISHes

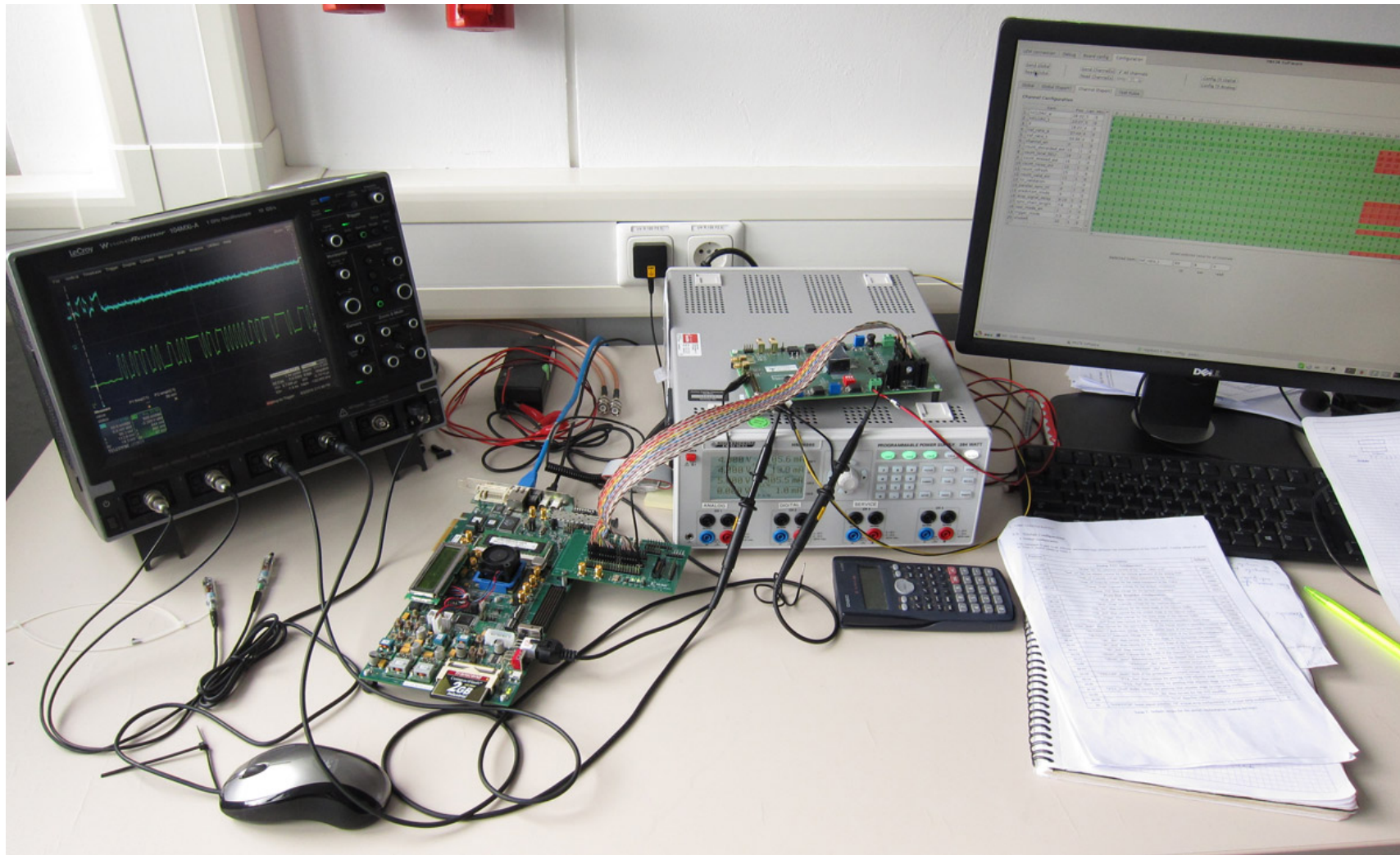


# Available DISHes



# Current Status

Testing started!



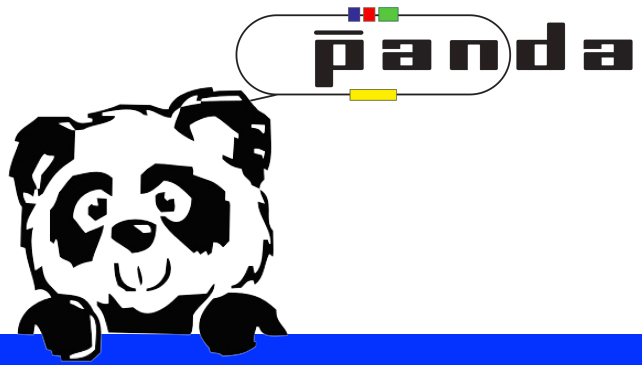
# Current Status





# Future developments

- 38 PASTA chips still available
- How many chips are needed for a multi-chip board?
  - Baby sensor: 2 chips
  - 2x2 sensor: 6 chips
  - PANDA square sensor: 8 chips
  - PANDA rectangular sensor: 11 chips
  - PANDA trapezoidal sensor: 12 chips
- Beware the low yield during assembly!!!



Thank you for your attention!