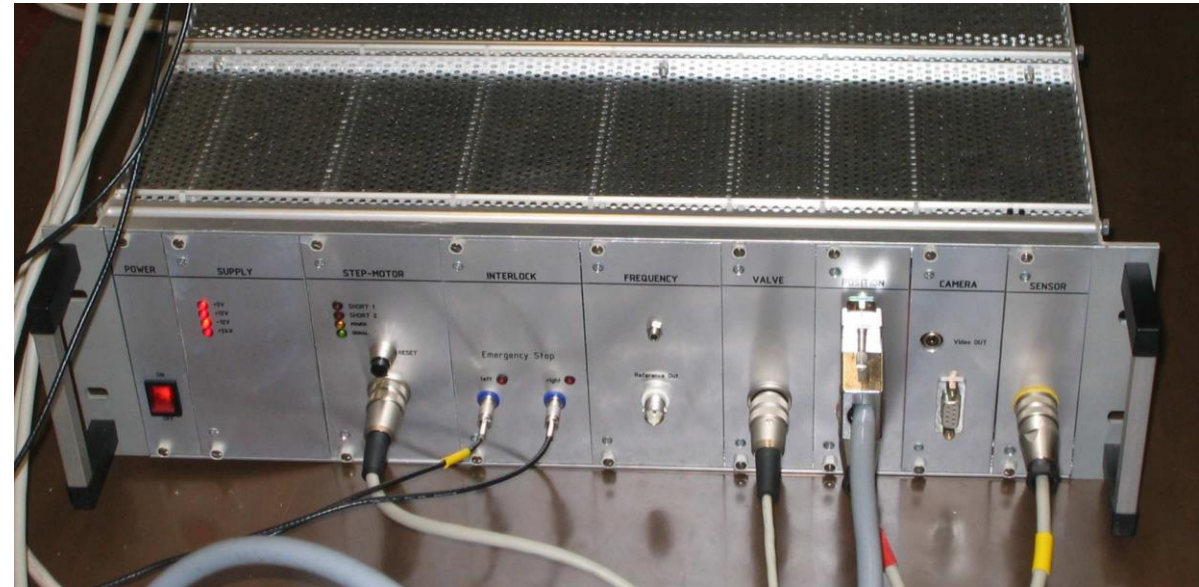
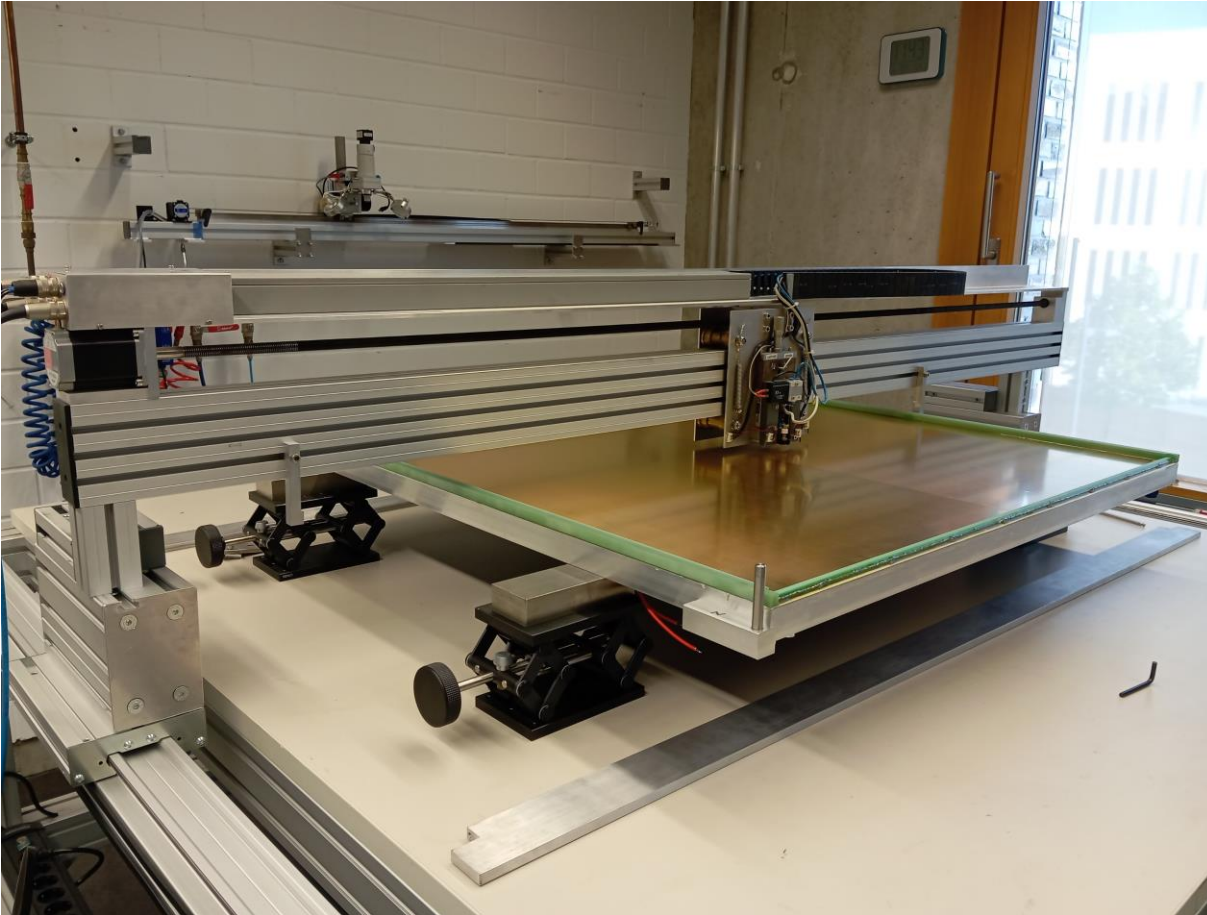
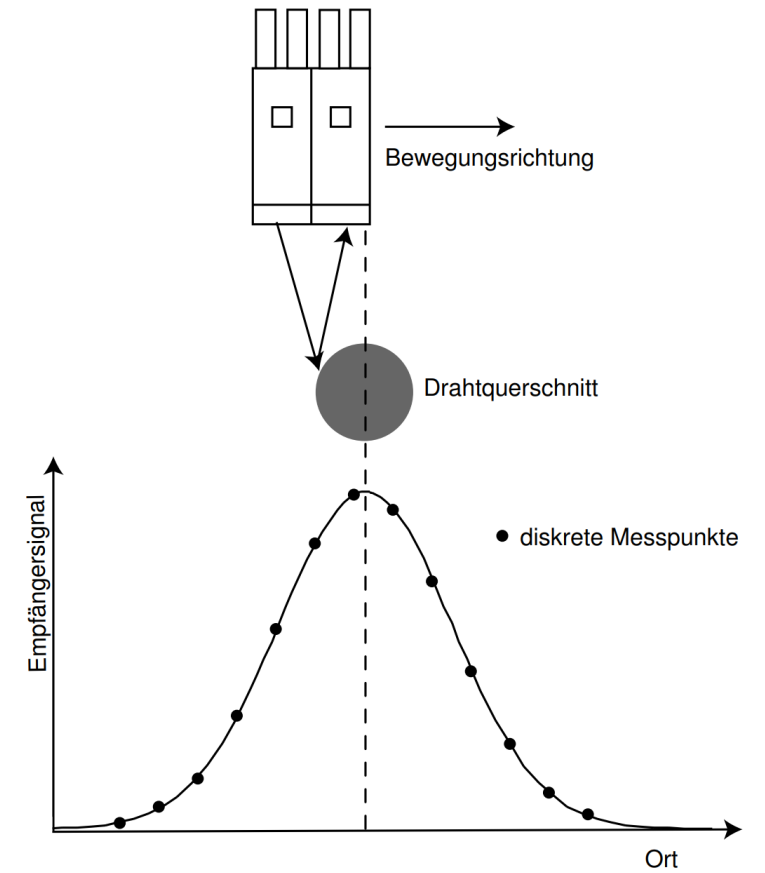
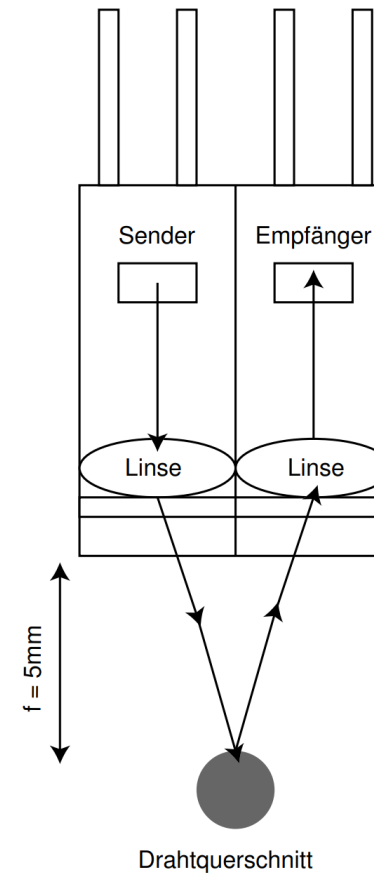


Wire tension measurement device



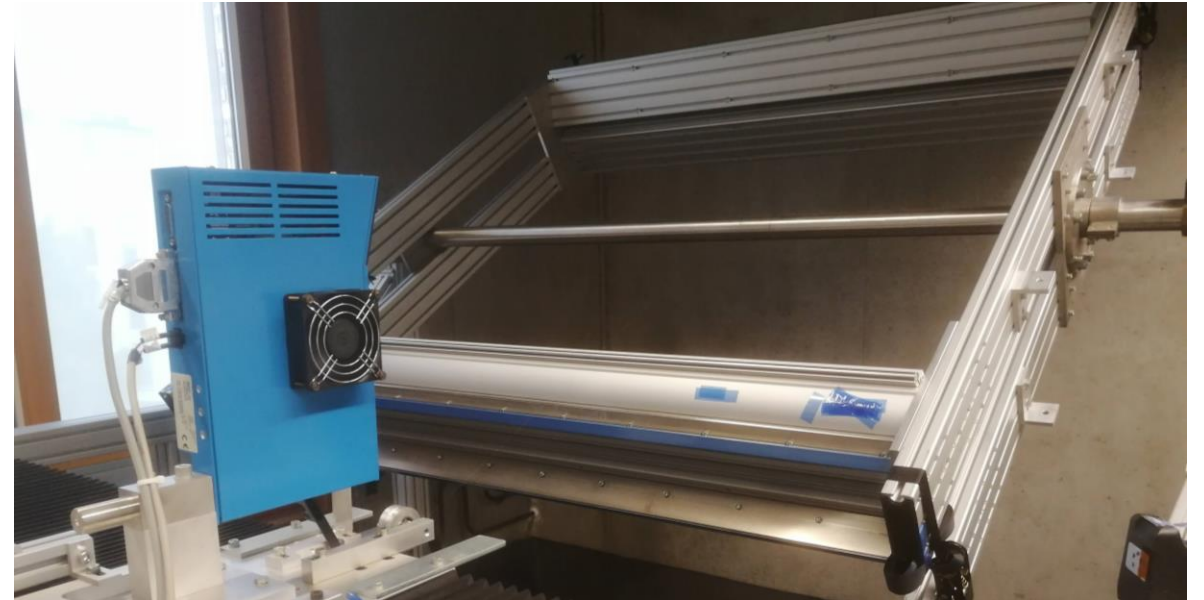
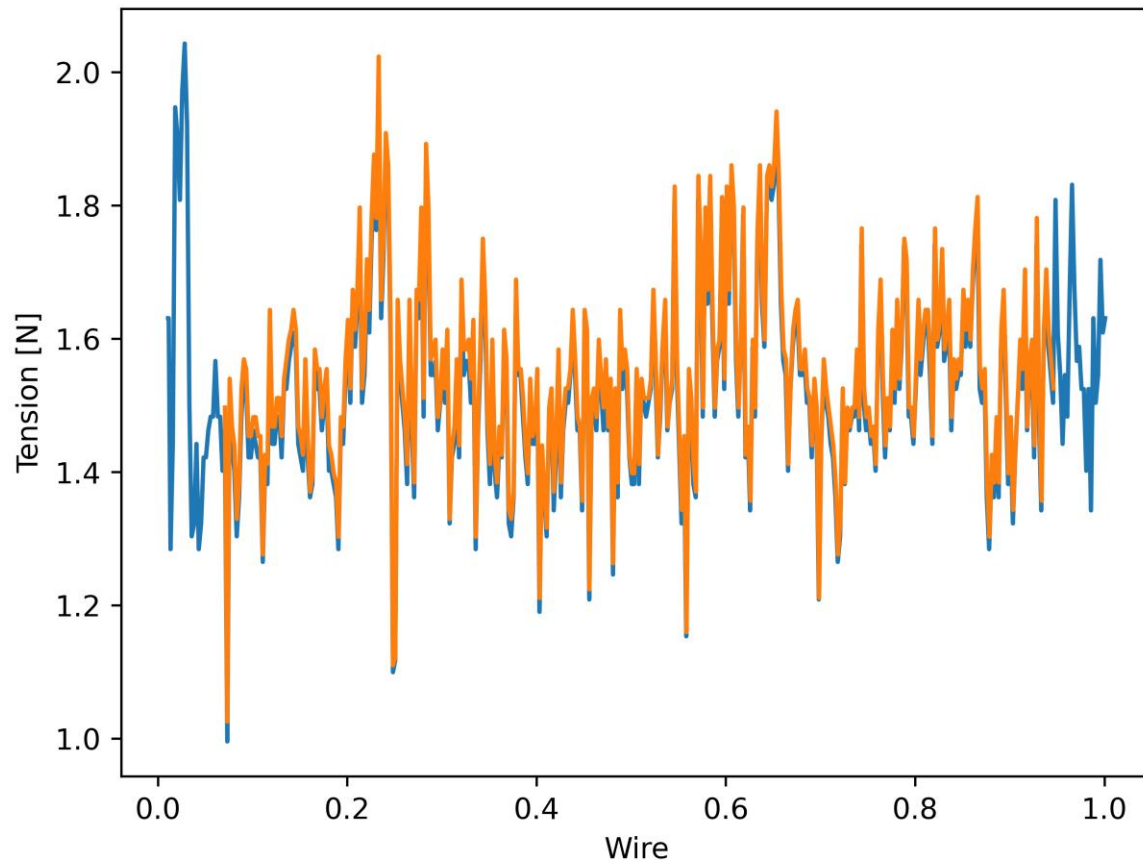
- Developed in 2005 for the construction of the ALICE TRD
- Control software based on LabView
- Overhauled in 2018 (new DAQ card and control software)

Operating principle



Measurement of the wire tension

Wire tension on frame vs on chamber



- Fluctuations in the wire voltage are most likely caused during winding of the wire.
- Highly reproducible wire tension measurement results

Measurement of the wire position

