



Computing Cluster Usage Visualization Tool



Prometheus - Cluster Computer Cluster utilization

December 2012

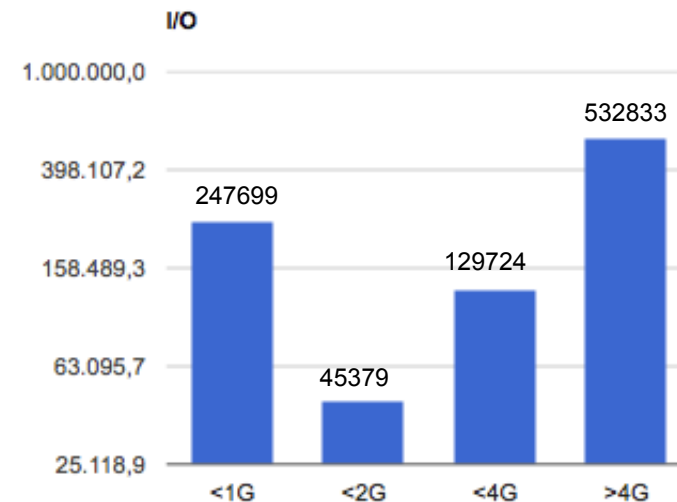
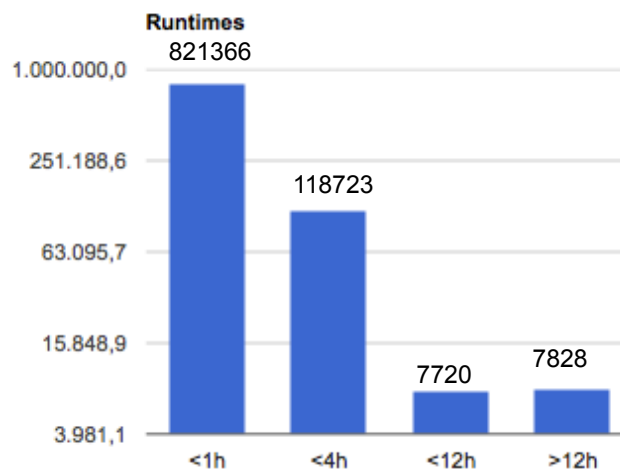
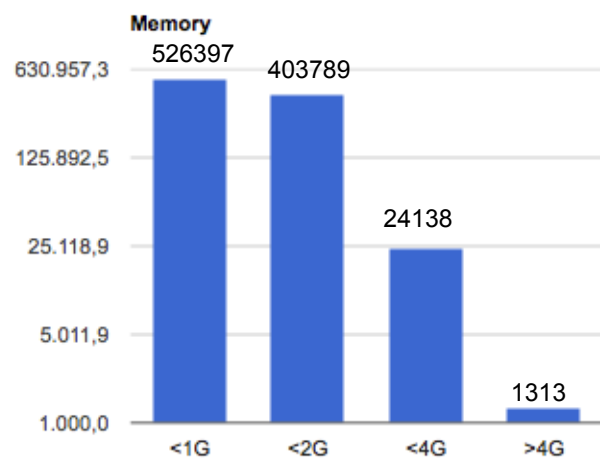
01.12. – 31.12.

Groups

User	Jobs submitted	Jobs failed	CPU time	Runtime	Memory used	I/O	cluster utilization
alice	955637	41335	471kh	611kh	194.06EBs	10.52PB	12%
hades	254821	3753	438kh	457kh	32.91EBs	2.12PB	9%
kp2	77743	7357	172kh	174kh	654.27PBs	99.77TB	3%
cbm	72549	5363	140kh	141kh	358.47PBs	461.83TB	2%
ufk	182980	194	25kh	33kh	16.09EBs	662.18TB	0%
bhs	1449	282	32kh	7kh	32.34PBs	7.43TB	0%
had1	300	101	2kh	2kh	6.98PBs	8.81GB	0%
hpc	8591	0	21s	143h35m	0.0Bs	321.22MB	0%
kp1	27	12	5h25m	7h36m	18.41TBs	92.03GB	0%
rz	5583	2579	5kh	8kh	15.73PBs	518.03GB	0%
the	20932	2209	88kh	34kh	428.91PBs	839.56TB	0%

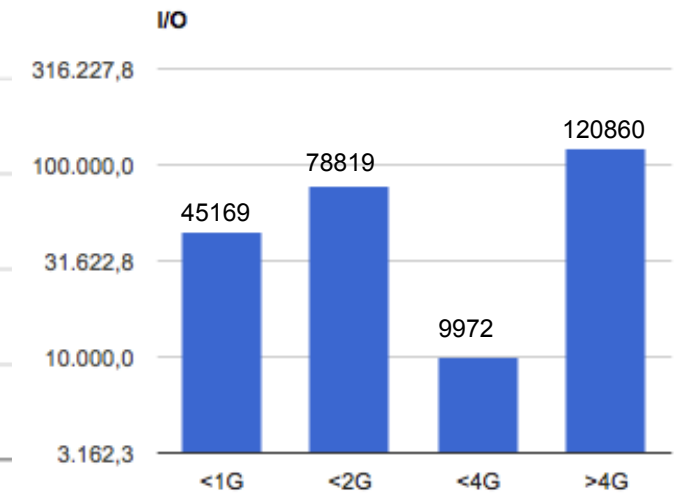
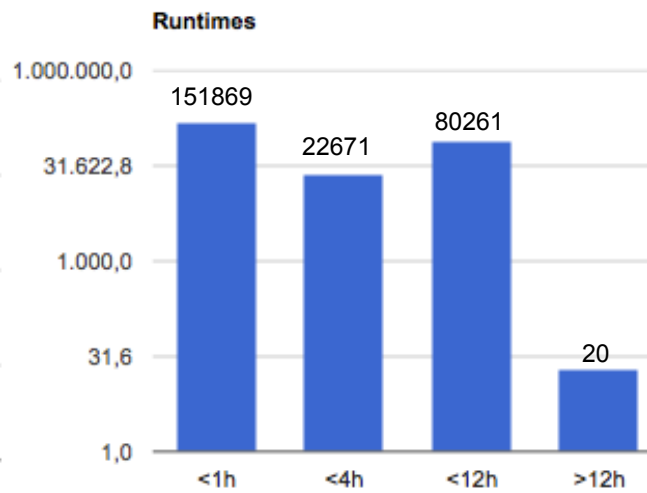
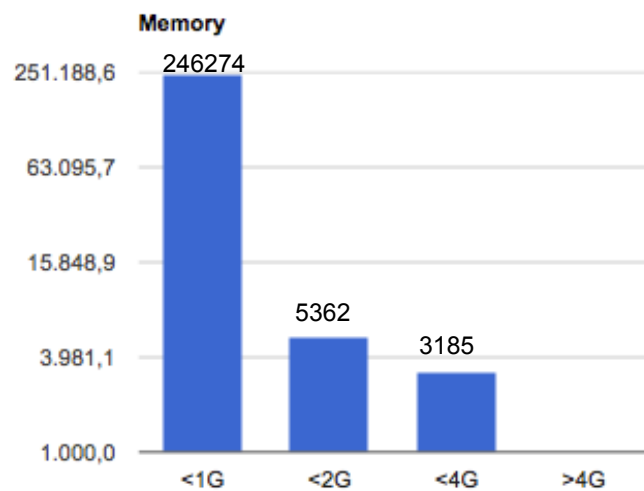
alice

User/Group-name	Jobs submitted	Jobs failed	CPU time	Runtime	Memory used	I/O	available runtime	cluster utilization
alice	955637	41335	471kh	611kh	194.06EBs	10.52PB	4734kh	12%



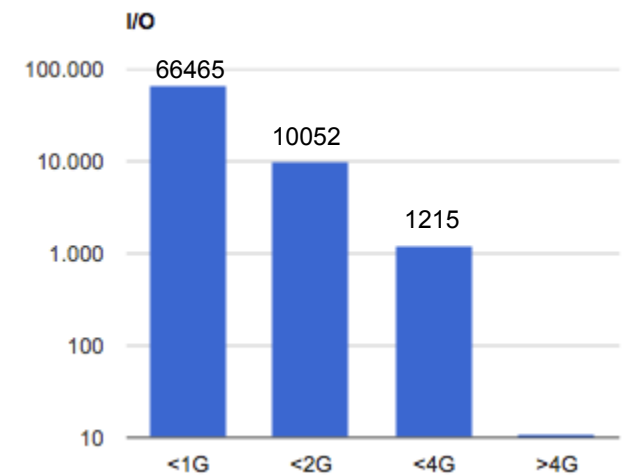
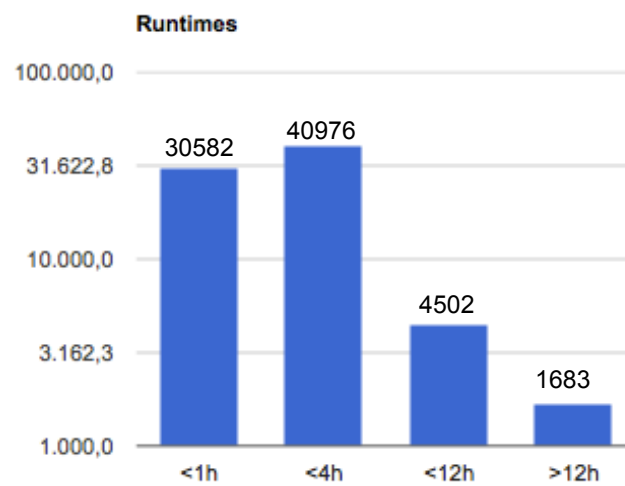
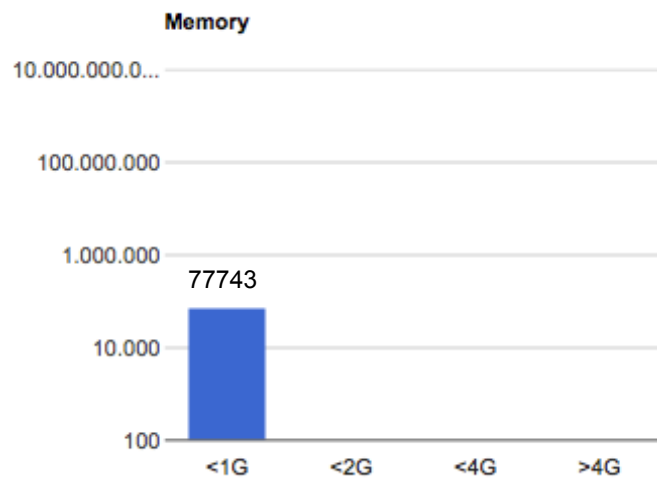
hades

User/Group-name	Jobs submitted	Jobs failed	CPU time	Runtime	Memory used	I/O	available runtime	cluster utilization
hades	254821	3753	438kh	457kh	32.91EBs	2.12PB	4734kh	9%



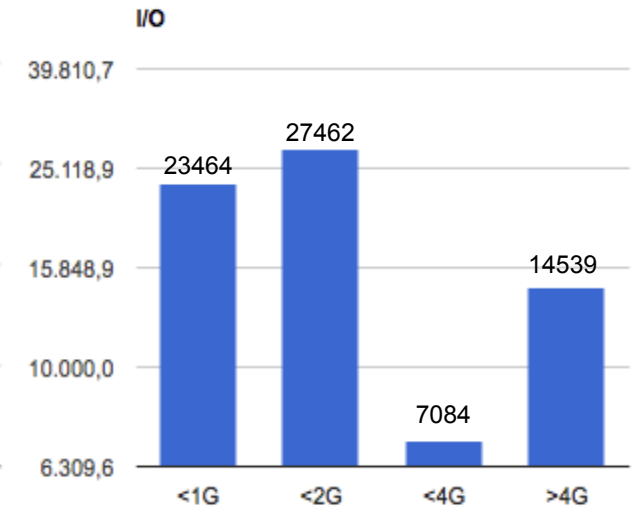
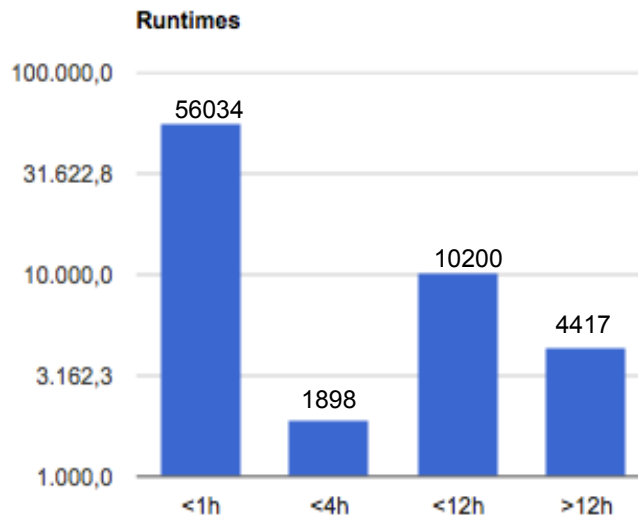
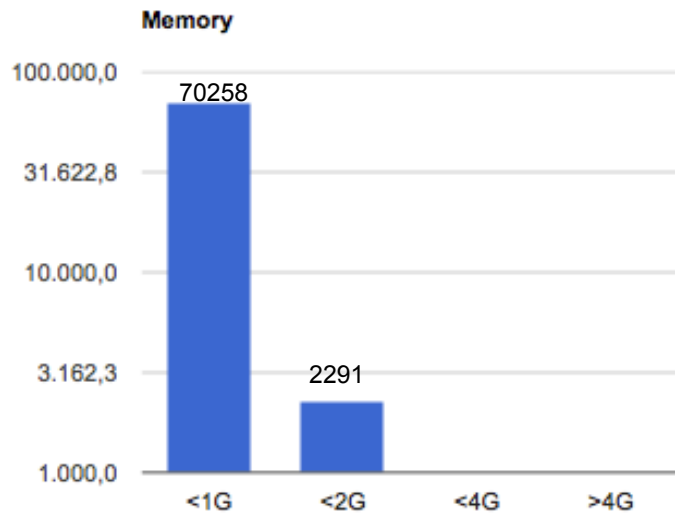
kp2

User/Group-name	Jobs submitted	Jobs failed	CPU time	Runtime	Memory used	I/O	available runtime	cluster utilization
kp2	77743	7357	172kh	174kh	654.27PBs	99.77TB	4734kh	3%



cbm

User/Group-name	Jobs submitted	Jobs failed	CPU time	Runtime	Memory used	I/O	available runtime	cluster utilization
cbm	72549	5363	140kh	141kh	358.47PBs	461.83TB	4734kh	2%



Users A - F

User	Jobs submitted	Jobs failed	CPU time	Runtime	Memory used	I/O
akalweit	896	3	281h37m	293h35m	1.32PBs	5.9TB
andrey	16543	901	29kh	29kh	78.11PBs	237.75TB
anielski	2090	0	64h32m	88h41m	121.78TBs	3.51TB
bailhach	852	46	116h38m	557h22m	384.34TBs	1.41TB
bhess	127385	8015	120kh	183kh	64.48EBs	1.32PB
bneuburg	8558	0	0s	143h28m	0.0Bs	308.36MB
cbaumann	5920	103	11kh	12kh	46.86PBs	260.82TB
cbehnke	12893	1	89h19m	725h35m	78.02TBs	6.58TB
cdritsa	6994	1999	5kh	5kh	16.01EBs	32.29TB
cfranco	24	13	832h47m	865h31m	959.98TBs	33.62TB
christis	44	41	3h35m	5h17m	4.81TBs	253.82GB
dlohner	212	2	180h6m	184h3m	490.2TBs	95.03GB
doenigus	421	0	171h17m	180h49m	488.65TBs	6.9TB
ebelolap	6480	11	17kh	17kh	48.3PBs	29.71TB
ekrebs	6831	20	149h24m	501h41m	83.98TBs	204.14GB
fbock	20941	1355	20kh	20kh	63.45PBs	343.72TB
feldkamp	27	12	5h25m	7h36m	18.41TBs	92.03GB
fischer	1154	405	46kh	3kh	270.1PBs	178.03TB
fpetrov	1242	229	21kh	6kh	15.14PBs	7.28TB
freidt	370	96	52h42m	59h18m	181.3TBs	2.13TB
frettig	2377	97	731h46m	761h50m	2.88PBs	17.15TB

Jobs failed:

Indicates the problem which occurred in case a job could not be started on the execution host

CPUA time:

The cpu time usage

Runtime:

The complete running time from all Jobs

Memory used:

The used memory from all Jobs

I/O:

The amount of data transferred in input/output operations.

Users G - L

User	Jobs submitted	Jobs failed	CPU time	Runtime	Memory used	I/O
gromliuk	300	101	2kh	2kh	6.98PBs	8.81GB
hadesdst	93867	226	399kh	400kh	16.81EBs	513.15TB
harabasz	96219	61	9kh	10kh	21.49PBs	231.14TB
iarsene	25485	284	578h58m	615h2m	2.56PBs	28.96TB
jacek	745	350	35h34m	38h29m	89.96TBs	2.29TB
jklein	1550	0	958h38m	1kh	2.82PBs	29.06TB
jknedlik	4315	2557	4kh	7kh	13.15PBs	16.26GB
jonderw	110368	3247	2kh	4kh	48.01EBs	93.79TB
jthaeder	1602	0	316h39m	317h51m	93.56TBs	320.63GB
jtscheus	13127	1827	20kh	20kh	53.47PBs	7.95TB
kgill	6242	0	4kh	7kh	15.35PBs	244.28TB
kisselan	1754	957	21kh	21kh	73.63PBs	1.27TB
koenig	127	0	74h50m	77h11m	150.83TBs	133.13GB
kryshen	284	13	1kh	2kh	6.26PBs	2.48TB
kvantour	1246	114	2kh	2kh	5.36PBs	5.07GB
lenhardt	310	11	7h0m	12h48m	35.24TBs	43.59GB
lhuther	1077	795	1kh	1kh	701.99TBs	3.49TB
lsilva	648	38	1kh	1kh	2.57PBs	192.01TB

Jobs failed:

Indicates the problem which occurred in case a job could not be started on the execution host

CPUA time:

The cpu time usage

Runtime:

The complete running time from all Jobs

Memory used:

The used memory from all Jobs

I/O:

The amount of data transferred in input/output operations.

Users M - P

User	Jobs submitted	Jobs failed	CPU time	Runtime	Memory used	I/O
marstrand	21650	133	698h28m	1kh	2.95PBs	72.45TB
mheide	47069	343	14kh	26kh	50.24PBs	3.43PB
mkrzewic	20756	952	51kh	64kh	475.38PBs	218.7TB
mlorenz	3983	563	1kh	5kh	4.5PBs	158.73TB
mmarquar	36	9	1h49m	2h36m	4.67TBs	112.5GB
mvoekl	138957	11451	35kh	60kh	48.13EBs	645.38TB
mwilde	232307	2510	77kh	81kh	16.26EBs	1.3PB
nicassio	6568	166	21kh	22kh	16.1EBs	351.97TB
obusch	699	0	216h12m	227h39m	974.4TBs	2.91TB
oezdemir	493	47	27h48m	29h45m	86.26TBs	1.2TB
olgapech	137	1	79h21m	81h40m	142.19TBs	323.71GB
osvoboda	2350	7	4kh	4kh	26.85PBs	367.25GB
pachmay	69179	643	32kh	39kh	127.73PBs	698.7TB
pgoergen	180	38	6kh	858h22m	12.46PBs	102.87GB

Jobs failed:

Indicates the problem which occurred in case a job could not be started on the execution host

CPUA time:

The cpu time usage

Runtime:

The complete running time from all Jobs

Memory used:

The used memory from all Jobs

I/O:

The amount of data transferred in input/output operations.

Users S - Z

User	Jobs submitted	Jobs failed	CPU time	Runtime	Memory used	I/O
sellheim	12415	796	1kh	4kh	4.06PBs	72.73TB
sheckel	23	0	4h28m	4h56m	8.65TBs	181.23GB
skirsch	162	1	239h29m	294h12m	1.49PBs	1.55TB
slebedev	8820	4426	49kh	49kh	119.76PBs	73.95TB
slindal	14	14	0s	0s	0.0Bs	0.0B
sschuchm	182980	194	25kh	33kh	16.09EBs	662.18TB
sudol	969	0	18h34m	49h35m	22.44TBs	427.47GB
sweber	2963	429	3kh	3kh	10.05PBs	50.85TB
tbroeker	88	33	6h54m	8h3m	23.83TBs	314.39GB
tneff	17455	895	39kh	27kh	152.76PBs	658.04TB
trascanu	8	0	45m43s	53m55s	1.03TBs	46.31GB
tscheib	11122	28	9kh	13kh	11.8PBs	683.37TB
turany	1268	22	1kh	1kh	2.58PBs	501.77GB
uhlig	75989	6400	150kh	152kh	580.65PBs	98.5TB
uwesterh	97	0	32h39m	39h24m	131.13TBs	1.18TB
vassilie	40422	12	41kh	42kh	106.03PBs	117.93TB
vpenso	33	0	21s	7m2s	0.0Bs	12.86MB
wiechula	99873	9127	53kh	64kh	264.26PBs	1.7PB
zlec	27	15	3kh	221h46m	4.74PBs	51.87GB

Jobs failed:

Indicates the problem which occurred in case a job could not be started on the execution host

CPUA time:

The cpu time usage

Runtime:

The complete running time from all Jobs

Memory used:

The used memory from all Jobs

I/O:

The amount of data transferred in input/output operations.

Summary

