



Computing Cluster Usage Visualization Tool



Prometheus - Cluster Computer Cluster utilization

November 2012

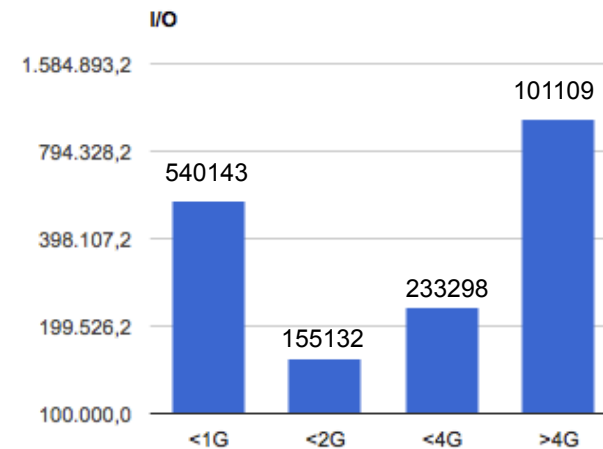
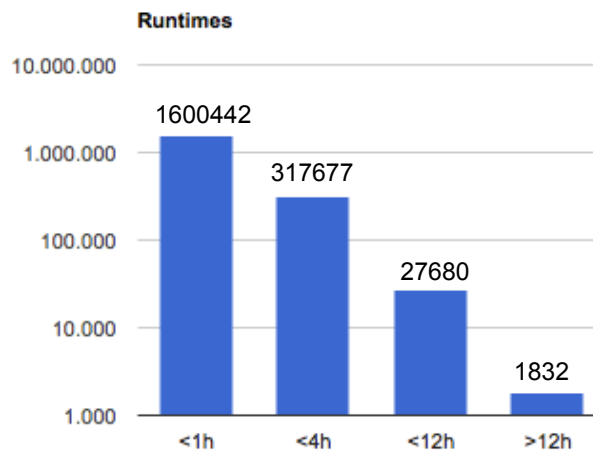
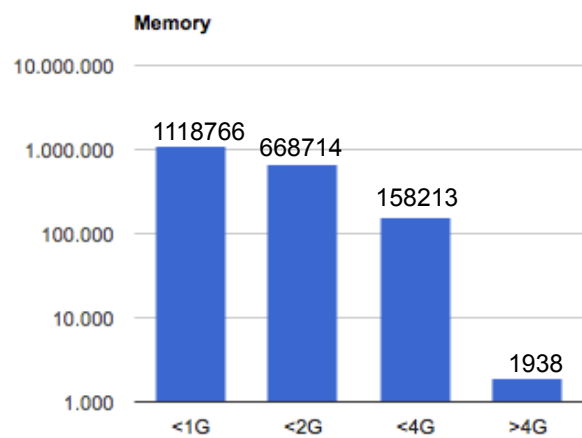
01.11. – 30.11.

Groups

User	Jobs submitted	Jobs failed	CPU time	Runtime	Memory used	I/O	cluster utilization
alice	1947631	111706	963kh	1Mh	340.19EBs	15.45PB	26%
hades	168765	15467	194kh	205kh	375.16PBs	1.07PB	4%
kp2	75171	5730	142kh	146kh	606.38PBs	175.37TB	3%
ufk	384476	13644	53kh	59kh	48.18EBs	1.28PB	1%
bhs	1012	219	24kh	3kh	25.91PBs	962.74GB	0%
cbm	28089	1365	26kh	26kh	59.63PBs	67.83TB	0%
had1	140	113	233h19m	233h28m	633.3TBs	1.29GB	0%
hpc	8268	0	10h43m	139h14m	1.96TBs	808.2GB	0%
kp1	4	0	40m41s	51m18s	1.29TBs	32.06GB	0%
rz	11363	1276	4kh	1kh	17.62PBs	1.86TB	0%
the	21047	6469	26kh	16kh	116.68PBs	134.51TB	0%

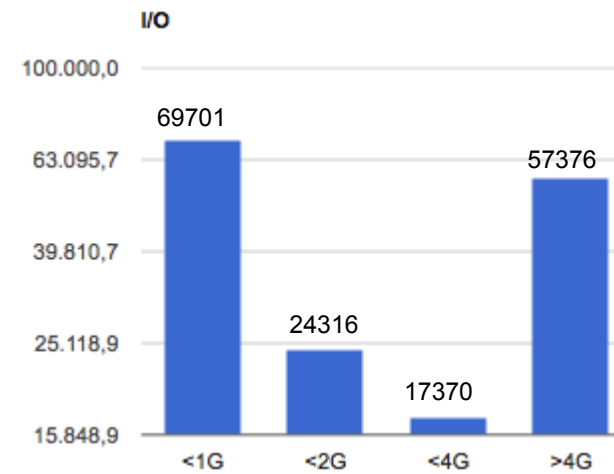
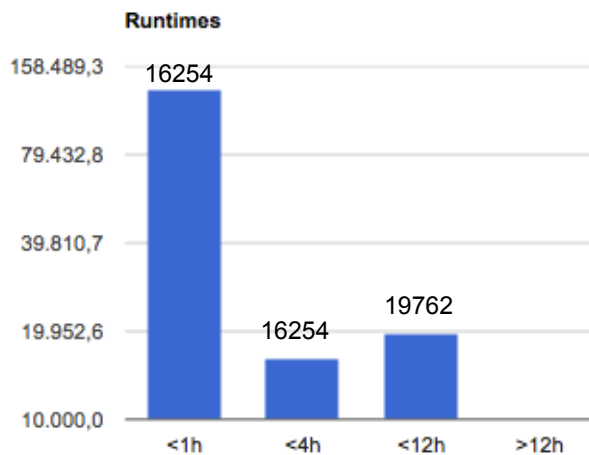
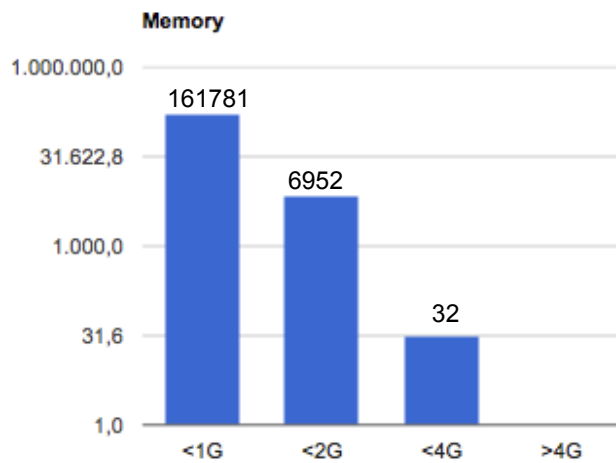
alice

User/Group-name	Jobs submitted	Jobs failed	CPU time	Runtime	Memory used	I/O	available runtime	cluster utilization
alice	1947631	111706	963kh	1Mh	340.19EBs	15.45PB	4576kh	26%



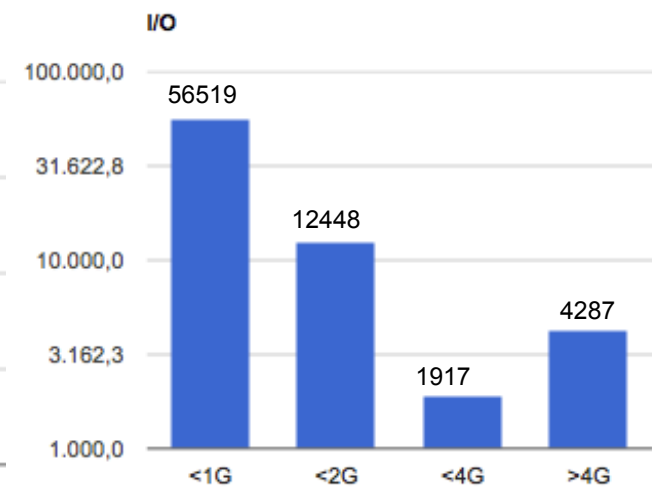
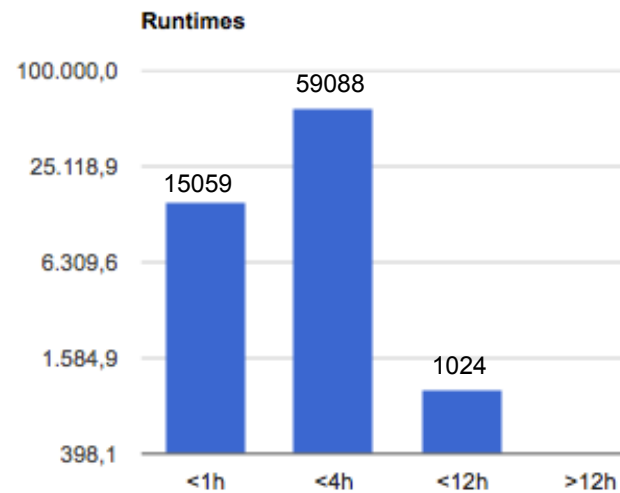
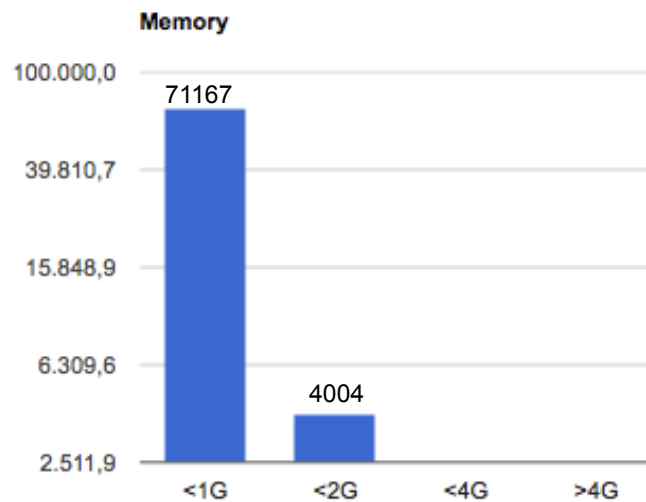
hades

User/Group-name	Jobs submitted	Jobs failed	CPU time	Runtime	Memory used	I/O	available runtime	cluster utilization
hades	168765	15467	194kh	205kh	375.16PBs	1.07PB	4576kh	4%



kp2

User/Group-name	Jobs submitted	Jobs failed	CPU time	Runtime	Memory used	I/O	available runtime	cluster utilization
kp2	75171	5730	142kh	146kh	606.38PBs	175.37TB	4576kh	3%



Users A - F

User	Jobs submitted	Jobs failed	CPU time	Runtime	Memory used	I/O
akalweit	26689	0	5kh	9kh	16.05PBs	137.88TB
andrey	20069	387	16kh	16kh	36.67PBs	31.31TB
anielski	1024	0	23h20m	37h57m	43.52TBs	1.03TB
bailhach	12	0	1h4m	1h16m	2.57TBs	58.52GB
bhess	124043	298	86kh	112kh	48.3EBs	1.54PB
bneuburg	8268	0	10h43m	139h14m	1.96TBs	808.2GB
cbaumann	18662	356	25kh	27kh	97.41PBs	608.48TB
cbehnke	3213	27	546h58m	1kh	648.23TBs	42.48TB
cdritsa	2359	1495	256h43m	451h21m	270.07TBs	7.51TB
christis	4225	0	3kh	4kh	11.0PBs	51.83TB
cpreuss	8407	1	23h19m	138h44m	4.31TBs	1.47TB
dlohner	200	0	13h24m	13h35m	37.52TBs	153.7MB
eyyubova	13051	0	3kh	3kh	10.24PBs	60.17TB
fbock	176945	1475	104kh	110kh	80.37EBs	1.56PB
fischer	1510	459	11kh	2kh	107.79PBs	4.54TB
fpetrov	414	134	4kh	1kh	3.24PBs	4.32GB
freidt	3390	2	5kh	5kh	18.21PBs	31.67TB
frettig	2865	1006	421h10m	850h58m	1.02PBs	45.38TB

Jobs failed:

Indicates the problem which occurred in case a job could not be started on the execution host

CPUA time:

The cpu time usage

Runtime:

The complete running time from all Jobs

Memory used:

The used memory from all Jobs

I/O:

The amount of data transferred in input/output operations.

Users G - L

User	Jobs submitted	Jobs failed	CPU time	Runtime	Memory used	I/O
galatyuk	787	0	432h15m	669h48m	1.89PBs	49.62TB
gromliuk	140	113	233h19m	233h28m	633.3TBs	1.29GB
hadesdst	82731	6987	167kh	170kh	309.67PBs	104.63TB
harabasz	31343	151	8kh	12kh	18.82PBs	239.54TB
iarsene	74958	10236	24kh	26kh	106.88PBs	137.86TB
jacek	51310	29940	5kh	5kh	16.78PBs	195.02TB
jklein	4154	306	705h36m	816h9m	2.73PBs	20.32TB
jknedlik	2956	1275	4kh	923h55m	17.62PBs	397.86GB
jonderw	128638	2359	8kh	10kh	26.22PBs	465.42TB
jthaeeder	220732	5856	164kh	205kh	681.09PBs	1.87PB
jtscheus	133938	394	707h49m	683h16m	671.99TBs	37.86TB
julery	6913	402	27kh	28kh	93.98PBs	24.78TB
kgill	804	0	72h57m	87h7m	293.04TBs	14.49TB
lenhardt	1075	130	24h3m	48h35m	113.88TBs	221.88GB
lhuther	19345	5971	12kh	12kh	981.51TBs	946.25GB
lsilva	4290	3446	327h32m	348h31m	1.09PBs	16.86TB

Jobs failed:

Indicates the problem which occurred in case a job could not be started on the execution host

CPUA time:

The cpu time usage

Runtime:

The complete running time from all Jobs

Memory used:

The used memory from all Jobs

I/O:

The amount of data transferred in input/output operations.

Users M - P

User	Jobs submitted	Jobs failed	CPU time	Runtime	Memory used	I/O
marmland	5885	587	3kh	3kh	33.02PBs	27.4TB
mfasel	14580	420	754h45m	804h57m	4.83PBs	200.61GB
mheide	61016	18	18kh	28kh	66.41PBs	2.31PB
misko	4	0	40m41s	51m18s	1.29TBs	32.06GB
mknichel	17449	3	1kh	6kh	4.88PBs	32.51TB
mkrzewic	216169	40753	89kh	149kh	32.88EBs	1.42PB
mkweon	4004	0	2kh	2kh	5.72PBs	204.15TB
mlorenz	3	0	25s	41s	7.0GBs	570.27MB
mmarquar	35	0	6h5m	7h46m	15.76TBs	243.29GB
mwilde	127625	6078	50kh	53kh	16.19EBs	621.91TB
nicassio	7092	652	17kh	18kh	83.36PBs	185.1TB
nmartin	130	0	10m55s	42s	34.0GBs	8.39GB
obusch	555	0	121h7m	221h30m	359.95TBs	2.61TB
oezdemir	564	184	147h48m	157h59m	603.69TBs	2.97TB
olgapech	320	3	993h59m	1kh	1.78PBs	3.4TB
osvoboda	1910	1	1kh	1kh	7.33PBs	676.23GB
pachmay	376605	5467	286kh	347kh	145.12EBs	3.54PB
pechenov	1380	647	1kh	1kh	2.0PBs	1.99TB
pgoergen	543	66	11kh	1kh	14.79PBs	744.16GB
pluettig	3911	3351	7h39m	16h8m	15.19TBs	439.82GB

Jobs failed:

Indicates the problem which occurred in case a job could not be started on the execution host

CPUA time:

The cpu time usage

Runtime:

The complete running time from all Jobs

Memory used:

The used memory from all Jobs

I/O:

The amount of data transferred in input/output operations.

Users S- Z

User	Jobs submitted	Jobs failed	CPU time	Runtime	Memory used	I/O
schuldes	209	0	4h12m5kh	7h34m	4.1TBs	611.26GB
sellheim	33334	1737	9kh	13kh	23.12PBs	424.45TB
sheckel	30	0	4h55m	5h12m	9.16TBs	229.63GB
sma	3200	0	89h20m	879h34m	84.75TBs	4.5TB
sschuchm	384476	13644	53kh	59kh	48.18EBs	1.28PB
sweber	9757	901	14kh	14kh	42.68PBs	143.99TB
tneff	192	39	2kh	1kh	7.93PBs	129.04TB
tscheib	6082	973	3kh	3kh	8.26PBs	187.51TB
uhlig	75171	5730	142kh	146kh	606.38PBs	175.37TB
uwesterh	124	8	25h13m	27h4m	101.13TBs	847.69GB
vassilie	8020	978	10kh	10kh	22.96PBs	36.52TB
wiechula	50587	512	8kh	19kh	16.03EBs	104.06TB
xlu	3991	0	323h36m	351h39m	857.2TBs	16.81TB
zimmerma	51498	12	3kh	4kh	8.16PBs	118.87TB
zlecZ	55	19	8kh	516h5m	7.87PBs	214.26GB

Jobs failed:

Indicates the problem which occurred in case a job could not be started on the execution host

CPUA time:

The cpu time usage

Runtime:

The complete running time from all Jobs

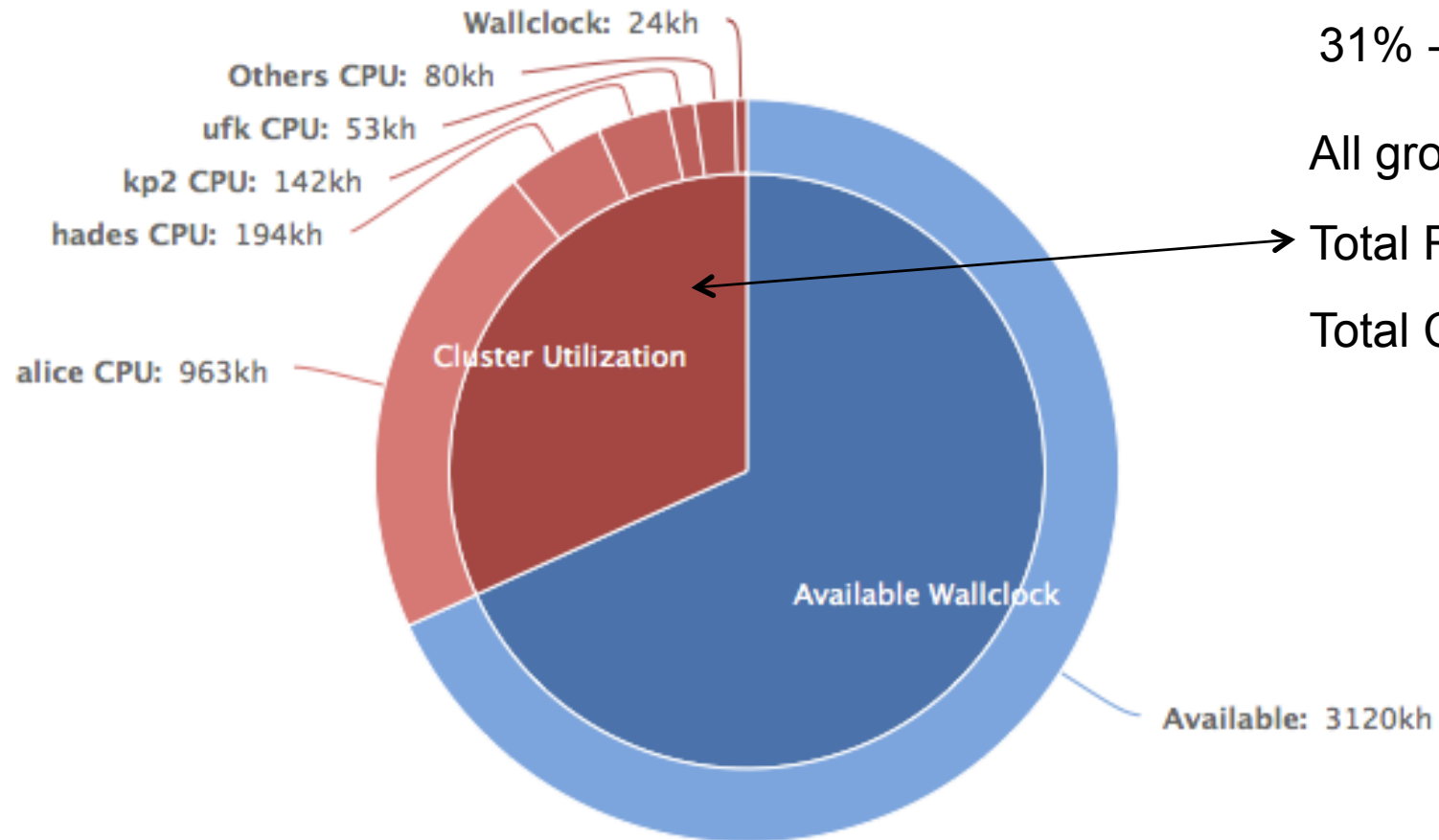
Memory used:

The used memory from all Jobs

I/O:

The amount of data transferred in input/output operations.

Summary



31% - 34% utilization

All groups:

Total Runtime: 1456kh

Total CPU-Time: 1432kh