

ExtreMe Matter Institute EMMI

EMMI Featured Talk / GSI-FAIR Colloquium

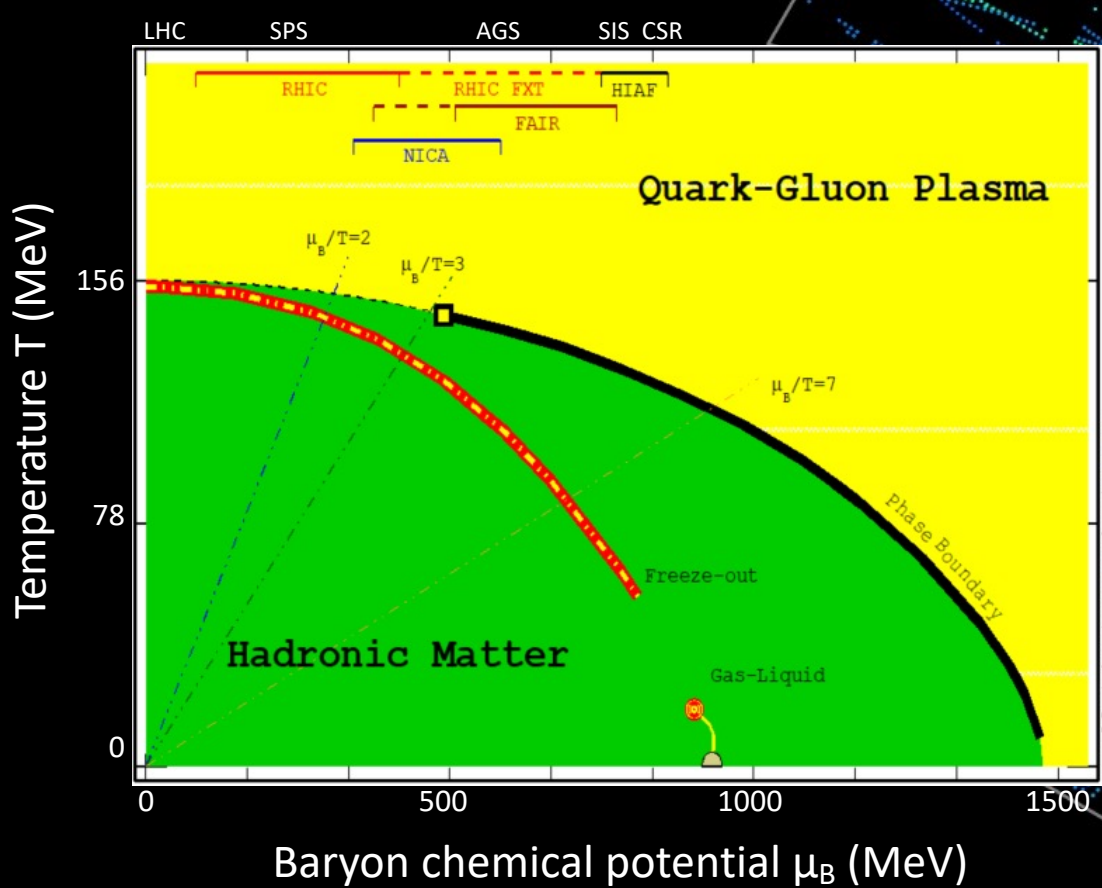
Nu Xu

GSI and Lawrence Berkeley National Laboratory

July 17, 2023, 16:15

Main Lecture Hall, GSI, Darmstadt

Study of the QCD Phase Structure in High-Energy Nuclear Collisions



credit: STAR / BNL

Abstract

In this talk, I will report recent progress from the RHIC beam energy scan program and the status of the search for the QCD critical point. Physics issues on thermalization in high-energy collisions, high-order correlations and hyper-nuclei production at high baryon density will be the focus of the discussion. Finally, physics potentials with new experiments and future facilities will be addressed.

