

SAISIDHA Sugar Equipment & Engineering Co. Pvt. Ltd.

A Heavy Engineering Company



1. SAISIDHA introduction

2. SAISIDHA x Bose Institute

a. Your context

b. Our answer

c. Our support (details of fabrication facilities and equipments)

d. Our team

3. Conclusion

a. SAISIDHA Certificates

b. SAISIDHA International Projects

c. SAISIDHA YoY Sales (3 years)

d. Why Choose Us?

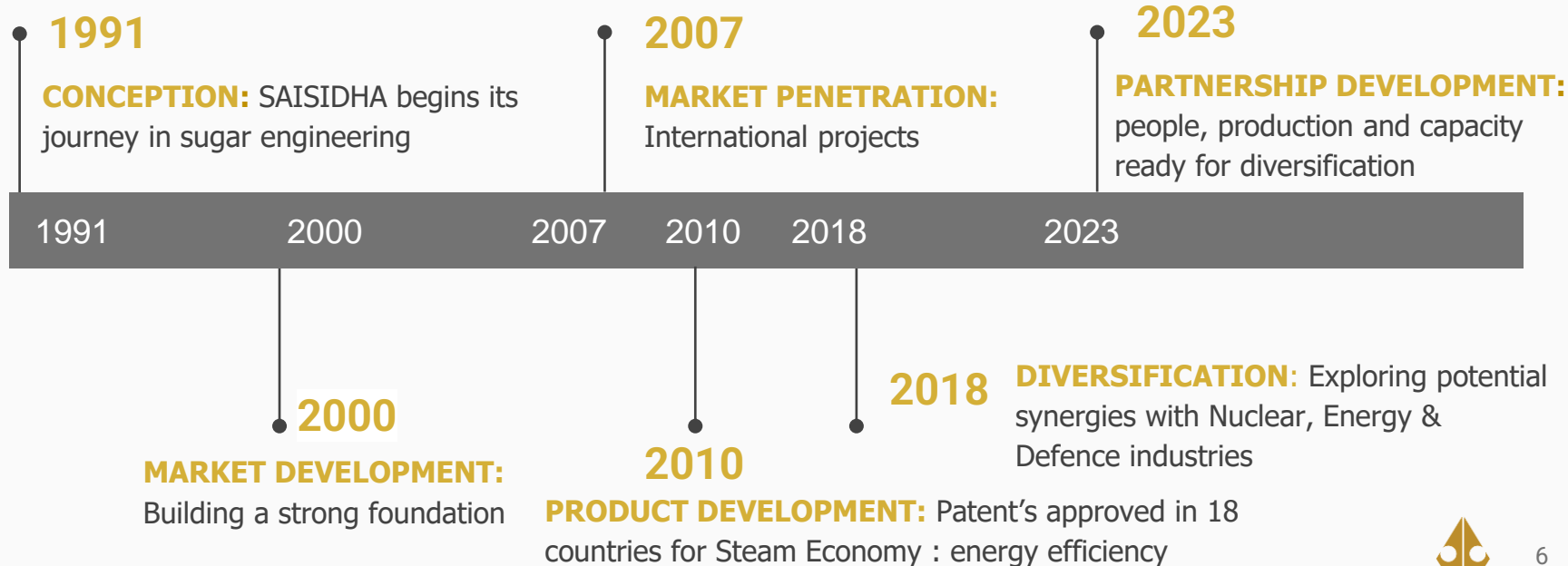
1. SAISIDHA Introduction

The image shows a vast industrial interior, likely a power plant or refinery, with a complex network of steel beams, pipes, and machinery. Several workers in green uniforms are visible on different levels of the structure. The ceiling is high and features a grid of skylights. The overall scene is one of a large-scale industrial operation.

“Being a **champion of turnkey EOT (Engineered-To-Order) manufacturing**, SAISIDHA welcomes the opportunity to work with the Bose Institute on custom made heavy engineering works”



History



Global Markets

ASIA - India, Vietnam, Bangladesh, Indonesia, Fiji

AFRICA - Uganda, Kenya, Ethiopia, Tanzania, Ghana, Sudan

LATIN AMERICA - Mexico, Guyana, Costa Rica, Nicaragua & Honduras)



**“70% of company’s
revenue is made up
of heavy
engineering project
exports”**

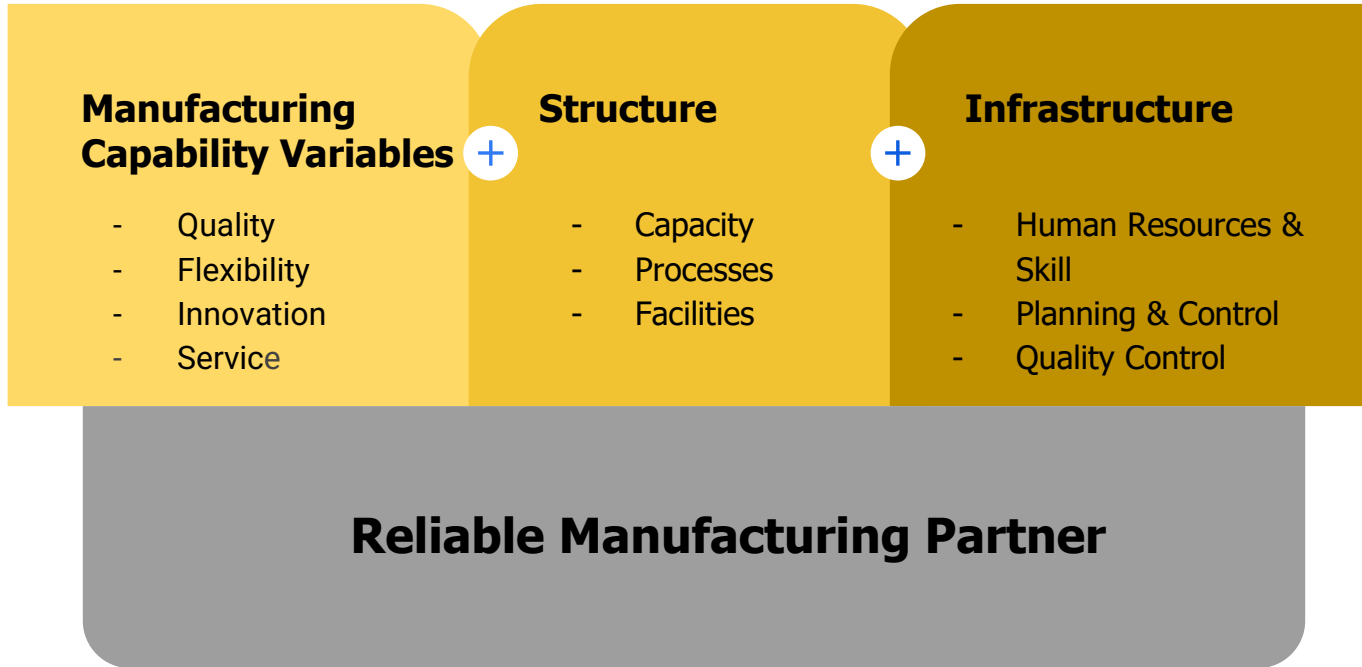


PRODUCTS

- **Global EPC/EPCM Supplier**
- **Complete Sugar Plants**
- **Distilleries**
- **Refineries**
- **Power Cogeneration Plants**
- **CO2 Purification Plants**

2. SAISIDHA x Bose Institute

2a. Our understanding of your needs



2b. Our Answer

PEOPLE:

Collective capability of an expert Project Management team that is experienced in driving key common deliverables throughout the factory and takes ownership of the manufacturing at all levels

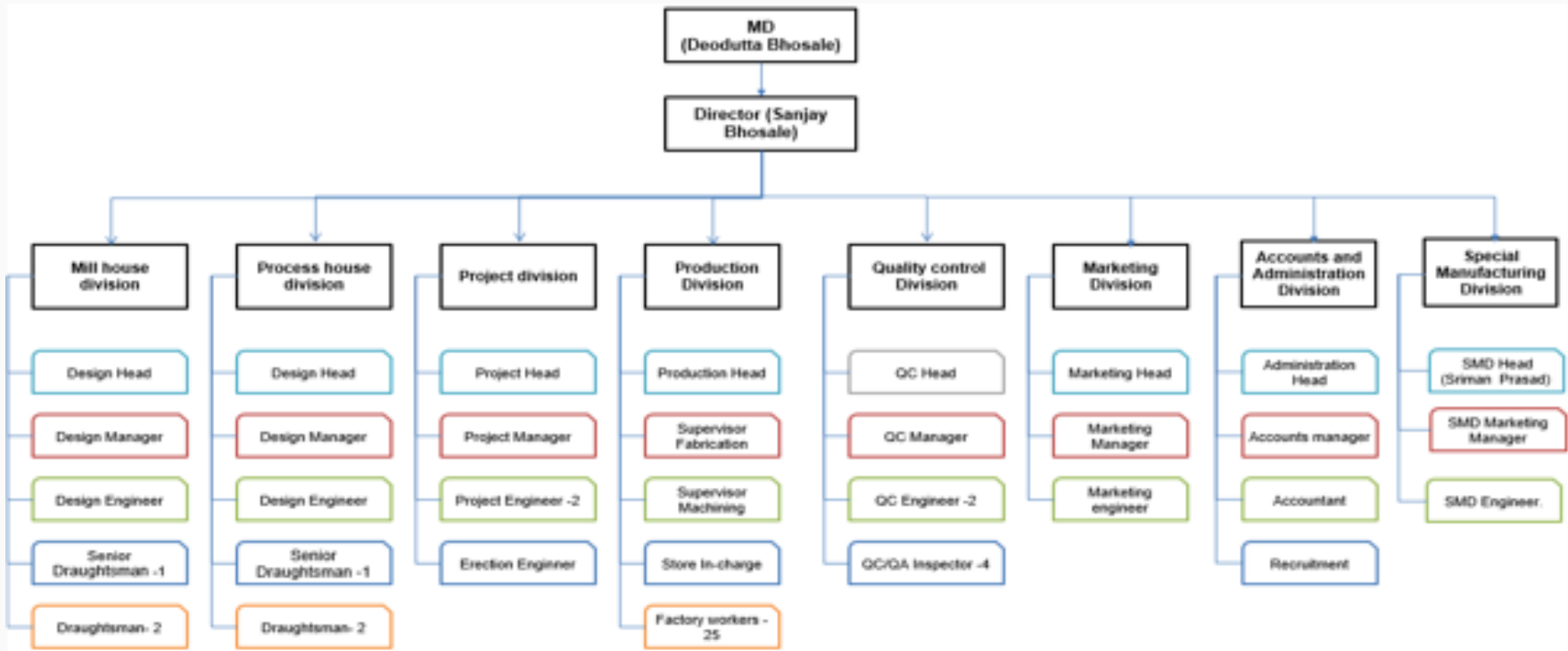
PROCESS:

As a heavy manufacturing company we have a well defined process for manufacturing. This means that we don't have to introduce entirely new processes. We have ensured that the core team dedicated to Projects apart from Sugar is accredited & qualified

PRODUCTION:

Our state of the art manufacturing facilities are well equipped & we are willing to make the necessary investment to develop it further

2b. Organisation Structure



2c. Our Support - Fabrication & Heavy Engineering Facilities

Place	Pune Bhosari MIDC	Solapur MIDC	Kolhapur
Purpose	Commercial HQ & Heavy Manufacturing Facility	Design & Manufacturing HQ & Heavy Engineering Facility: Bay 1 - 20 Tonnes EOT Crane - 2 Nos Bay 2 - 15 Tonne & 10 Tonne EOT Crane - 1 No. each Bay 3 - 20 Tonne & 25 Tonne EOT Crane - 1 No. each	Specialised Mill Manufacturing Facility
Total Area	2497.80 sq.m	9895 sq.m	1950 Sq.m
Total Built-Up Area:	1642 sq. m	5800 sq.m	975 Sq.m
<i>A. Office Building</i>	<i>593.18 sq. m</i>	<i>296 Sq.m</i>	<i>140 Sq.m</i>
<i>B. Covered Workshop Area</i>	<i>1048.82 sq. m</i>	<i>2980 Sq.m</i>	<i>950 Sq.m</i>
Open Area	855.80 sq. m	4095 sq.m	883 Sq.m

2c. Photographs of Fabrication & Heavy Engineering Facilities



PUNE

SOLAPUR



KOLHAPUR

2c. Photographs of Fabrication & Heavy Engineering Facilities



2c. Photographs of Fabrication & Heavy Engineering Facilities



2c. Photographs of Fabrication & Heavy Engineering Facilities



2c. Photographs of Fabrication & Heavy Engineering Facilities



2c. Photographs of Fabrication & Heavy Engineering Facilities



2c. Photographs of Fabrication & Heavy Engineering Facilities

BAY 1



BAY 2



2c. Photographs of Fabrication & Heavy Engineering Facilities

PROJECTS & MARKETING TEAM



2c. Details Fabrication & Heavy Engineering Facilities

FABRICATION FACILITY

1. E.O.T CRANES
2. HYDRA CRANE
3. MOBILE CRANE
4. PLATE ROLLING M/C
5. HYDRAULIC PRESS M/C
6. WELDING M/C
7. RECTIFIER
8. GRINDING M/C
9. PIPE BENDING M/C

MACHINING FACILITY

1. BORING M/C
2. SHAPING M/C
3. MILLING M/C
4. DRILLING M/C
5. LATHE M/C
6. RADIAL DRILLING M/C
7. POWER HACKSAW
8. GAS CUTTING
9. BENCH GRINDER

2c. List of Equipments

List of Equipments at our Solapur Workshop Facilities

Equipment Type	Make/ Model	Capacity	Number	If owned, date of purchase	If leased, valid up to
Saisidha, Solapur Workshop - Equipments					
Bay No.1 - EOT Crane - 2 Nos.	Saisidha make	15 Ton - 1 No. 20 Ton - 1 No.	2 Nos.	Owned	-
Bay No.2 - EOT Crane - 2 Nos.	Saisidha make	20 Ton - 2 Nos.	2 Nos.	Owned	-
Bay No.3 - EOT Crane - 2 Nos.	Saisidha make	20 Ton - 2 Nos.	2 Nos.	Owned	-
Radial Drilling M/c - 03 Nos.	HMT make	RM-65 series	03 Nos.	Owned	-
Radial Drilling M/c - 02 Nos.	HMT make	Z-30 series	02 Nos.	Owned	-
Lathe M/c - 36" - 1 No.	-	26' L x 36" Bed Width	01 No.	Owned	-
Lathe M/c - 22" - 1 No.	-	12' L x 20" Bed Width	01 No.	Owned	-
Lathe M/c - 14" - 1 No.	-	8' L x 16" Bed Width	01 No.	Owned	-
Lathe M/c - 10" - 1 No.	-	12' L x 11" Bed Width	01 No.	Owned	-
Lathe M/c - 12" - 1 No.	-	16' L x 16" Bed Width	01 No.	Owned	-
Shaping Machine - 1 No.	-	1 No. 24" Stroke	01 No.	Owned	-
Milling Machine - 1 No.	-	1 No. Vertical	01 No.	Owned	-
Power Hacksaw - 1 No.	-	1 No.	01 No.	Owned	-
Coil Bending Machine - 1 No.	-	Cap.1" to 6"	01 No.	Owned	-
Plate Bending Machine - 2 Nos.	Bend upto 25mm Thk	2.5 Mtrs. Width	02 Nos.	Owned	-
Rectifiers - 4 Nos.	Adani Orlikon make	600 AMPS	04 Nos.	Owned	-
Welding Machines (ARC) 15 Nos.	ARC make	400 AMPS	15 Nos.	Owned	-
Welding Machines (CO2) 02 Nos.	ARC make	400 AMPS	02 Nos.	Owned	-
Pug Cutting Machines - 4 Nos.	Esab make	-	04 Nos.	Owned	-
Magnetic Drill Machine - 1 Nos.	-	Cap.1, 1/4"	01 No.	Owned	-
Bench Grinder - 2 Nos.	-	-	02 Nos.	Owned	-
Portable Grinder - 8 Nos.	KPT & Bosch make	AG-7 type	08 Nos.	Owned	-
Gas Cutting Sets - 8 Nos.	-	-	08 Nos.	Owned	-
Plano Miller - 2 Nos.	BICO make	L-3000, C-200, H-850	02 Nos.	Owned	-
Boring Machine - 1 No.	Unique make	100 Spindle - 1 No.	01 No.	Owned	-
Shaping Machine - 1 No.	Sagar make	600 Stroke	01 No.	Owned	-
Profile Cutting M/c. - 1 No.	-	-	01 No.	Owned	-
Radial Drilling M/c - 1 No.	HMT make	RM-65 series	01 No.	Owned	-
Hydra Cranes	Escorts make	20MT	01 No.	Owned	-
Mobile Crane	Escorts make	40MT	01 No.	Owned	-
Hydraulic Press - 1 No.	-	500 Tons	01 No.	Owned	-

2c. List of Equipments

Saisidha, Kolhapur Workshop Equipments

DETAILS OF MACHINERY-SHOP NO.1

1	HORIZONTAL FLOOR BORING MACHINE 1 NO.	Size :	WMW Union Ø 160 SPINDLE
		TABLE SIZE :	2000 x 6000 MM
		LONGITUDINAL TRAVELS:	X-AXIS - 7000 MM
		VERTICLE TRAVEL :	Y-Axis - 2500 MM
		Z-Axis :	Head - 500 MM Spindle- 1500 MM
2	HORIZONTAL FLOOR BORING MACHINE 1 NO.	Size :	WMW Union Ø 160 SPINDLE
		TABLE SIZE :	2000 x 6000 MM
		LONGITUDINAL TRAVELS:	X-AXIS - 7000 MM
		VERTICLE TRAVEL :	Y-Axis - 3000 MM
		Z-Axis :	Head - 500 MM Spindle- 1500 MM
		Rotary Table :	2500 x 3000 MM
3	HORIZONTAL FLOOR BORING MACHINE 1 NO.	Size :	SKODA Ø 160 SPINDLE
		TABLE SIZE :	2000 x 4500 MM
		LONGITUDINAL TRAVELS:	X-AXIS - 4000 MM
		VERTICLE TRAVEL :	Y-Axis - 2500 MM
		Z-Axis :	Ram Travel - 1200 MM Spindle Travel - 2500 MM
		Rotary Table :	2000 x 2000 MM
4	HORIZONTAL BORING MACHINE Table Type 1 NO.	Size :	COLLET Ø 160 SPINDLE
		TABLE SIZE :	2400 x 2700 MM
		LONGITUDINAL TRAVELS:	X-AXIS - 3000 MM
		VERTICLE TRAVEL :	Y-Axis - 3000 MM
			Z Axis - 2500 MM
5	RADIAL DRILL MACHINE HMT MAKE- 1 NO.	Model - RM65	
6	Electric Hoist- 1 NO.	20 TONNE Capacity	

2d. Our team

The strength of the team is each individual member. The strength of each member is the team



Devdatta Bhosale

A seasoned mechanical engineer. His forte is Industrial Design, Costing, Operations Management & Precision Custom - made Engineering



Sanjay Bhosale

Experienced Director within industrial engineering. Skilled in Negotiation, Budgeting, Management, Contract Negotiation, and Supply Chain Management.



Chaitrali Bhosale

International Business & Economics professional with prior experience in UK and France. Skilled in new market studies, development projects and international finance.



Darshan Bhosale

Experienced Mechanical Engineer with prior experience from the US within energy efficiency and heavy engineering projects.

3a. Certificates

3a. Certificates

ISO 9001:2015

Quality Management System

EXIM Empanelled

Empanelled with the EXIM Bank of India as a turnkey manufacturer/supplier

Two Star Export House

Govt. of India recognised Two Star Export House

Highest CRISIL Rating

CRISIL Rating of SME 1 indicating high level of credit worthiness

3a. Certificates



Two Star Export House



CRISIL Rating SME 1

3b. SAISIDHA Projects



3b. SAISIDHA Projects in Africa

Sl.	Name of the Customer	Project Details	Year
01	Kinyara Sugar Works Ltd.,	Expansion from 2500TCD to 4000TCD	2007-2008
02	Mayuge Sugar Industries Ltd.,	Expansion from 300TCD to 600TCD	2008-2009
03	Mayuge Sugar Industries Ltd.,	3500TCD Complete Sugar Plant on Turn-key Basis	2010-2011
04	Kamuli Sugar Industries Ltd.,	1250TCD Complete Sugar Plant on Turn-key Basis	2011-2012
05	GM Sugar Industries Ltd.,	1000TCD Complete Sugar Plant on Turn-key Basis (Without Boiler & Turbine)	2011-2012
06	Hoima Sugar Industries Ltd.,	2000TCD Complete Process House on Turn-key Basis with Configuration of their Old Mills, Old Boiler & Old Turbine, Complete Design, Engg. Erection & Commissioned by Saisidha	2013-2014
07	Modern Distillery Ltd.,	30KLPD Plant on Turnkey with Independent Boiler & Turbine	2014-2015
08	Hoima Sugar Industries Ltd.,	Addition of Zero Mill Size 36" x 72" with GRPF	2014-2015
09	Modern Distillery Ltd.,	CO2 Purification Plant on Turn-key Basis	2015-2016
10	Hoima Sugar Industries Ltd.,	Design, Mfg. & supply of New Mill as a LAST mill Size 36" x 72" with GRPF by removing their old 2 mills.	2016-2017
11	Hoima Sugar Industries Ltd.,	Design, Mfg. & supply of 3 rd Mill Size 36" x 72" with UFR	2017-2018
12	Kamuli Sugar Industries Ltd.,	Expansion of 1250TCD to 2200TCD of the Sugar Plant on Turnkey Basis	2018-2019
13	Kinyara Sugar works Ltd.,	Complete Process House on Turn-key Basis 7500TCD Plant	2019-2020
14	Hoima Sugar Industries Ltd.,	Complete Expansion of existing 2000TCD to 7000TCD Sugar Plant. In this expansion we have design, mfg, supply & commissioned of 4000TCD complete Boiling House	2019-2020
15	Hoima Sugar Industries Ltd.,	Design, Mfg & supply, Erection & Commissioning Cane Unloading, Cane Conveying, Cane Preparation with Supply of 36" x 72" Mill with UFR for 7000TCD Sugar Plant	2020-2021
16	Kiryandongo Sugar works Ltd	Design, Mfg, supply, Erection & Commissioning Complete Cane Milling plant & Process House for 3000TCD sugar plant	2020-2021
17	Bugiri Sugar Co.Ltd., Uganda	3000TCD Complete Sugar Plant on Turn-key Basis	2021-2022

BESIDE THE UGANDA SAISIDHA IS HAVING STRONG PRESENCE IN ENTIRE AFRICA.

SAISIDHA HAS COMPLETED DESIGN, MANUFACTURE, SUPPLY, ERECTION & COMMISSIONING OF CANE HANDLING, CANE PREPARATORY & DE-WATERING MILLS OF 45" X 90' FOR 12000TCD IN ETHIOPIA FOR THREE SUGAR PLANTS I.E. OMO-I, BELES-I & BELES-II.

3b. SAISIDHA Projects

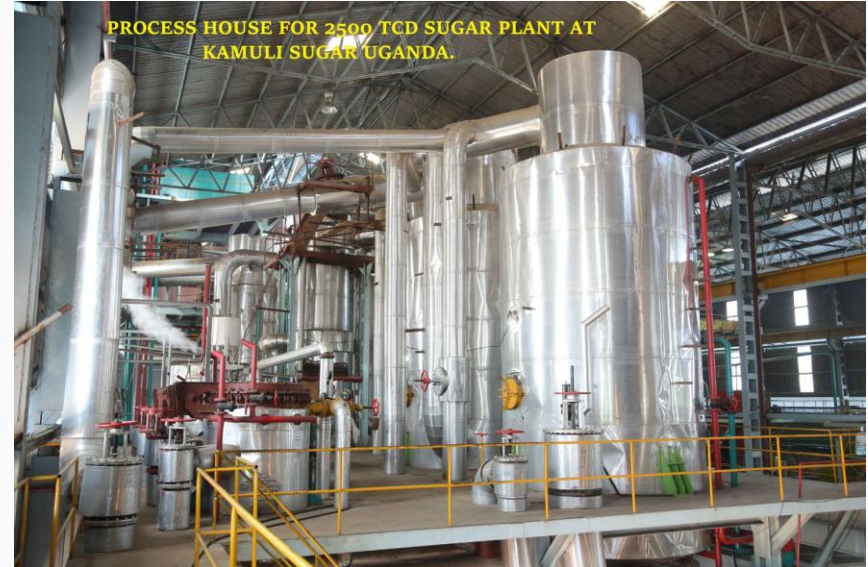
Sl.	Name of the Customer	Country	Project Details	Year
01	OMO-1, Beles-I & II in Ethiopia. Sugar Corporation of Ethiopia	ETHIOPIA	From Cane Handling upto De-Watering Mills of 45"x90" for 12000 TCD Sugar Plant	2014-2015
02	Bangladesh Machine Tools (A/c. Carew & Co., BSFIC)	BANGLADESH	1500 TCD Complete Revamping Plant [New Mill House/ New Evaporator Station, Pan, RVF & Clarifier/40TPH, 45Kg Boiler/2.5 MW	2016-2017
04	Sony Sugar Co. Ltd (Kenya)	KENYA	Cane Chopper Assly with Drive Unit. – 1 Set	2017-2018
05	CDT Co. Ltd (Vietnam)	VIETNAM	15 T Cont. Pan for C-Mass – 1 No	2017-2018
06	Santander Sugar (Santander Group), Latin America	LATIN AMERICA	25 MT Cap. Rotary Sugar Louvre Type Dryer cum Cooler	2018-2019
07	Bagmati Khandsari Sugar Mills Pvt Ltd, Nepal	NEPAL	Polyester Sling Type Rope Coupling – Model No:- SS-4 for Sugar Mill Ø28"x56" size	2018-2019
08	AZUCARERA EL VIEJO, South America (Costa-Rica).	COSTA RICA	Supply of Vibro Screen	2020-2021
09	INGENIERIA Y SERVICIOS INGESER S. A. COSTA RICA	COSTA RICA	one single 4-roller mill 48" [4 feet] long, complete, Donnelly Chute & Rope Coupling	2021-2022
10	Savannah Sugar Company (Dangote Group), Nigeria.	NIGERIA	Supply of Full Gear Coupling	2021-2022
11	CREMMS Limited, GUYANA	GUYANA	Supply of Trash & Scrapper Plates	2021-2022
12	Consolidated Farming Ltd, Lusaka, Zambia (CFL Ltd.,)	ZAMBIA	Chopper, Leveller & Tumbler Assembly with Motor & Gear Box	2021-2022
13	Dangote Sugar Numan, Nigeria	NIGERIA	Supply of Trash Plates	2021-2022
14	Ingenio La Gloria, Mexico, S.A.	MEXICO SA	SS CONDENSER WITH AUTOMATION of size Ø1300MM, suitable 80 T Pan. Dia. 1300 mm	2021-2022
15	Sukari Industries Ltd, KENYA	KENYA	Rope Coupling Slings Size 900mm for Mill	2021-2022
16	Mtibwa Sugar Estates, Tanzania	TANZANIA	Various Boiler Tubes, Mill Rollers & Roller Bearings etc	2021-2022
17	West Africa Agro-Tech Co Gh Ltd (WAATCO), Ghana.	GHANA	Maintenance Overhauling work of existing machineries of Sugar Plant of 1250 TCD	2021-2022
18	Mina Fam Sepehr Co. IRAN	IRAN	Supply of Saisidha Make Polyester Sling Type Rope Coupling having Model SS-10	2021-2022
19	Ingenio La Gloria, Mexico, S.A.	MEXICO SA	SS CONDENSER WITH AUTOMATION of size Ø1300MM, suitable 80 T Pan. Dia. 1300 mm	2022-2023

SAISIDHA IS HAVING GLOBAL PRESENCE OTHER THAN AFRICA IN THESE COUNTRIES i.e. Latin American Continent - Guatemala & Belize, also Mexico, Vietnam & Bangladesh.

3b. Photographs of some jobs dispatched



3b. Photographs of some jobs dispatched



3b. Photographs of some jobs dispatched



3b. Photographs of some jobs dispatched



3b. Photographs of some jobs dispatched



3c. SAISIDHA Revenue



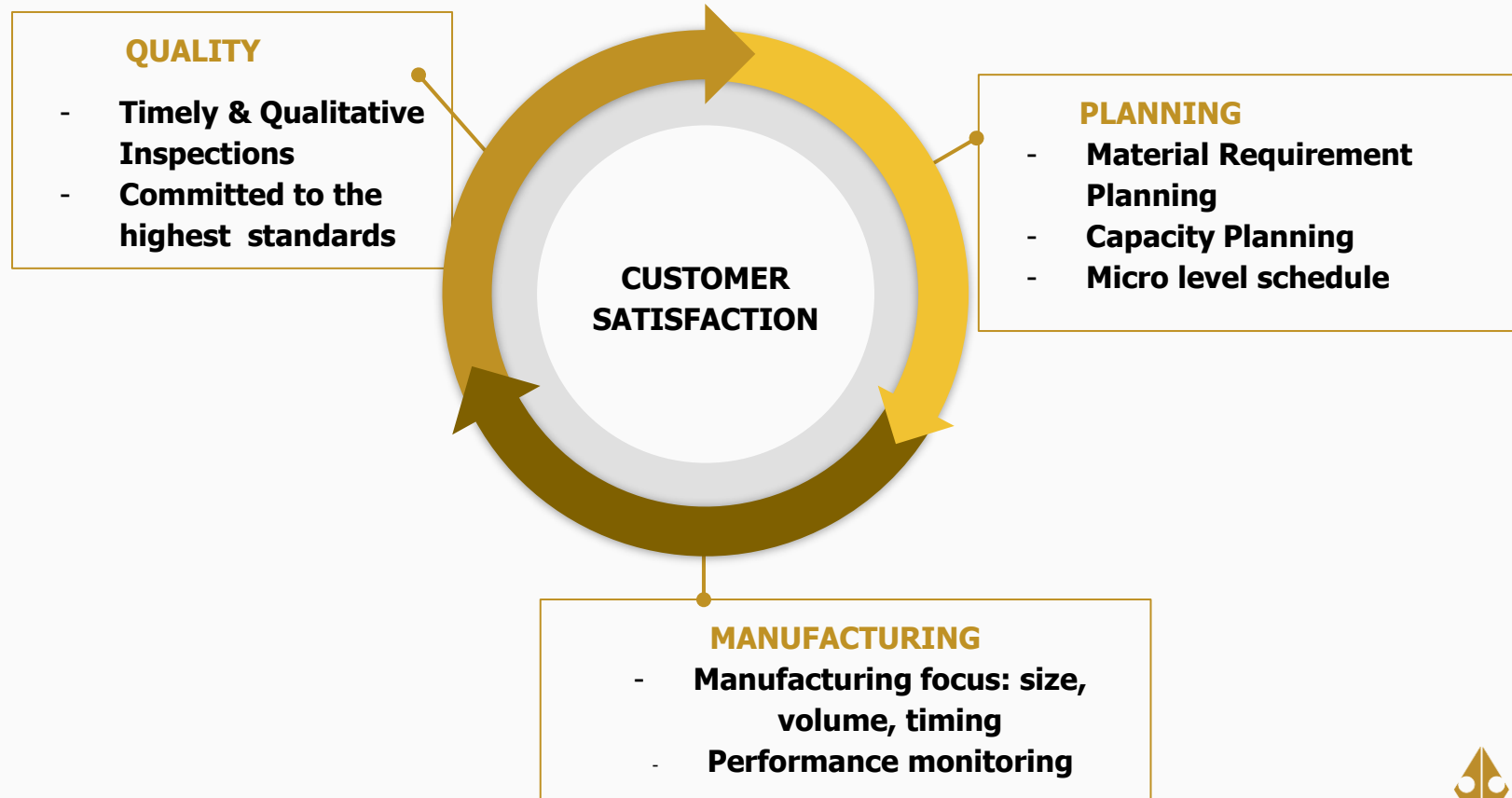
3c. SAISIDHA YoY Sales in INR (3 years)

FY 2020-21			
NET SALE	TOTAL SALES	DOMESTIC SALES	EXPORT SALES
	1,083,708,850	212,490,774	871,218,076

FY 2021-22			
NET SALE	TOTAL SALES	DOMESTIC SALES	EXPORT SALES
	1,073,935,708	304,518,527	769,417,181

FY 2022-23			
NET SALE	TOTAL SALES	DOMESTIC SALES	EXPORT SALES
	2,002,400,755	1,164,230,681	838,170,074

3d. WHY CHOOSE US?



SAISIDHA Promise

Reliable Engineering with SAISIDHA

"Our commitment to expertly deliver upon projects is entrenched throughout our business, right from Mr Sanjay Bhosale & Devdatta Bhosale to the apprentices in our workshop"



SAISIDHA

SAISIDHA SUGAR EQUIPMENT & ENGINEERING CO. PVT. LTD.

Registered Office/ Works-1: Plot No-95, Sector No-10, PCNTDA, Bhosari, Pune-411 026 (Maharashtra – INDIA)

Works-2: C-207 & 208 -MIDC Chincholi SOLAPUR–413255 (Maharashtra - INDIA) Ph.No.++91 217 273 2491

Email: info@saisidha.com; **Website:** www.saisidha.com