

Schedule of the FEE installation at GSI

S.Pietri (GSI)

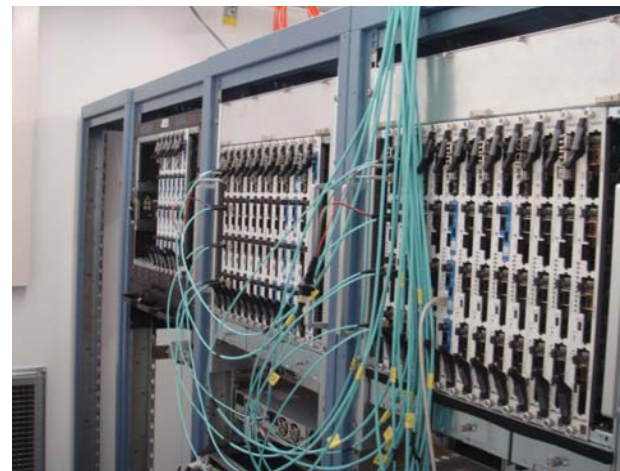
A.Gadea (IFIC)

For the FEE Working Group

AGATA FEE Installation

Knowing that the Technical in-beam commissioning started the 26th of April, it was decided to split the installation of the FEE in two parts.

- First part (13.03-30.03) will correspond to the installation of the system for up to 15 capsules, i.e. as it was in LNL, with minimum changes and with the VHDL0 firmware.
- Second part (June-July), to be scheduled after the delivery of all the FEE parts under construction, corresponds to adding 10 chains of FEE. There is enough FEE electronics produced to continue using only segment pre-processing mezzanines and, therefore, to use the VHDL0 firmware, or to use the core pre-processing mezzanines with the VHDL1 firmware if the commissioning is completed.



AGATA FEE Installation: Second part

- Due to the production issues, mainly related with the ZARLINK component in the carrier. The delivery of 1/2 of the new electronic is delayed.
- Early July the electronics for 5 or 6 capsules will be delivered ready with only segment pre-processing mezzanines (VHDL0 version)
- As soon as it is working the rest of electronics will be delivered as well ready to use the VHDL0.
- The Local Group, with the help of the CSNSM colleagues will install the cards at the beginning of July.
- The commissioning of VHDL1 firmware will be programmed as soon as possible after the end of the first 1/2 of the campaign.

