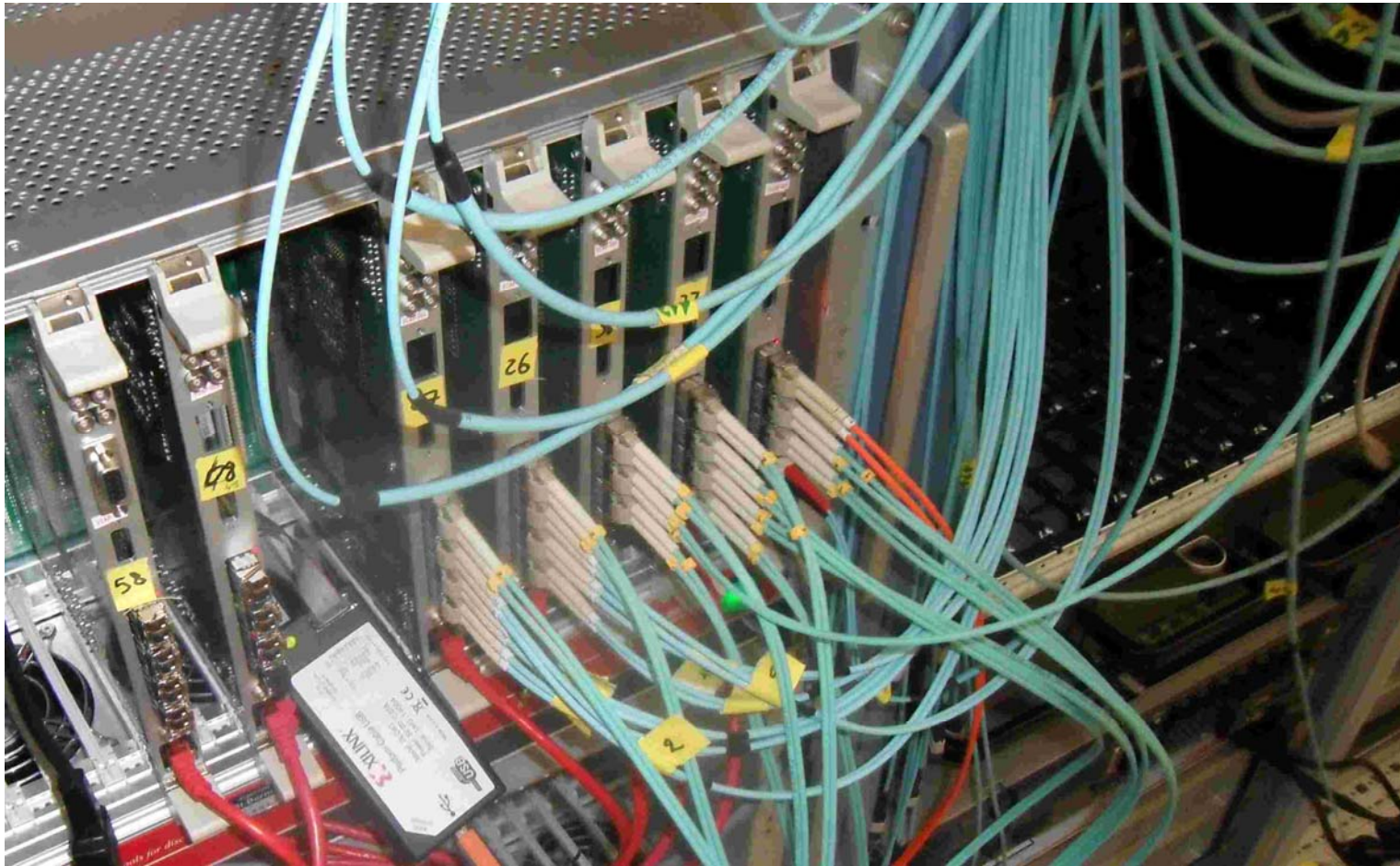




Status of electronic at GSI

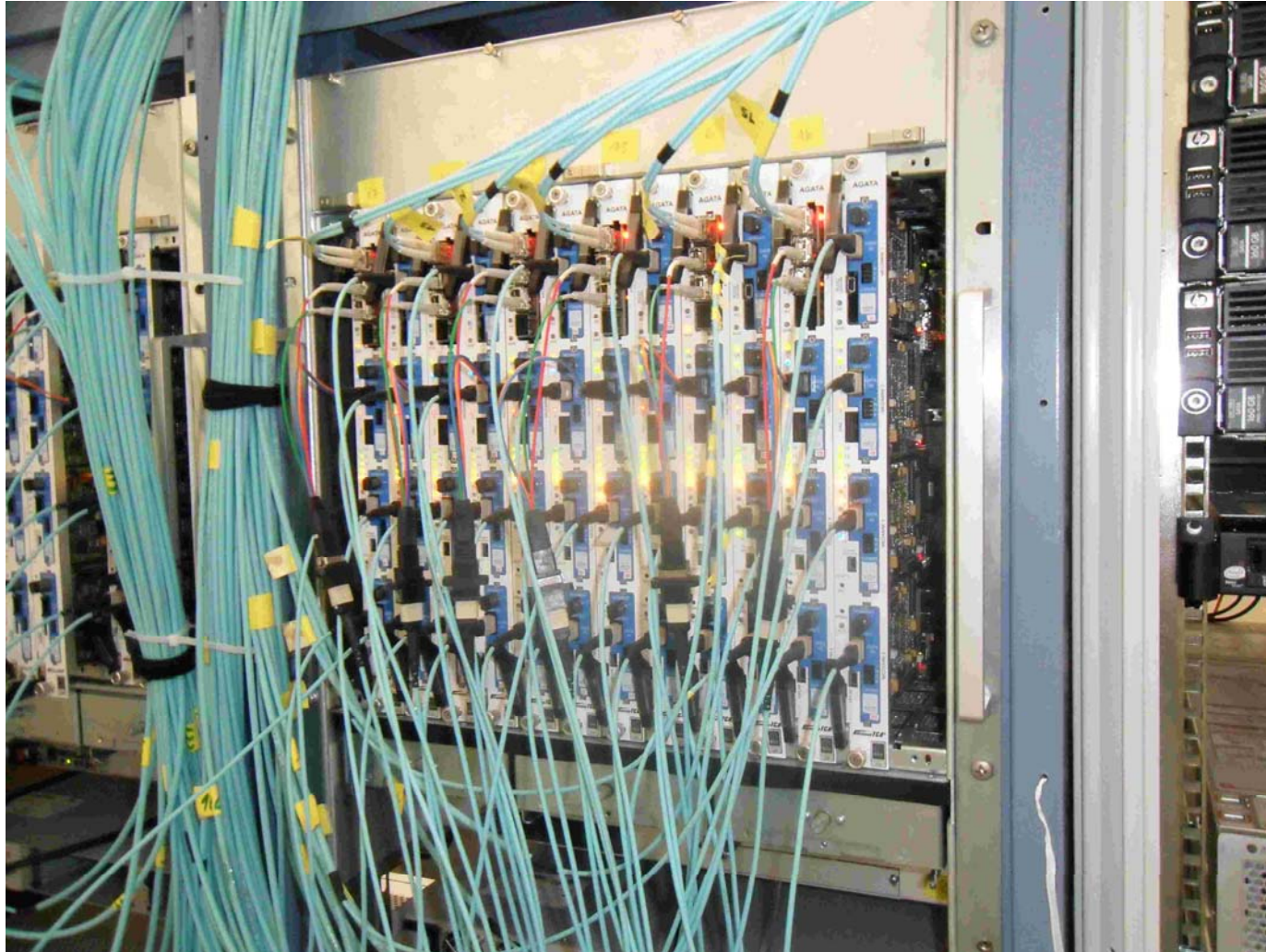
Stephane Pietri, FRS/SFRS, GSI
On behalf of the AGATA collaboration

GTS tree and trigger processor



All installed by Damiano and Dino

FEE electronic



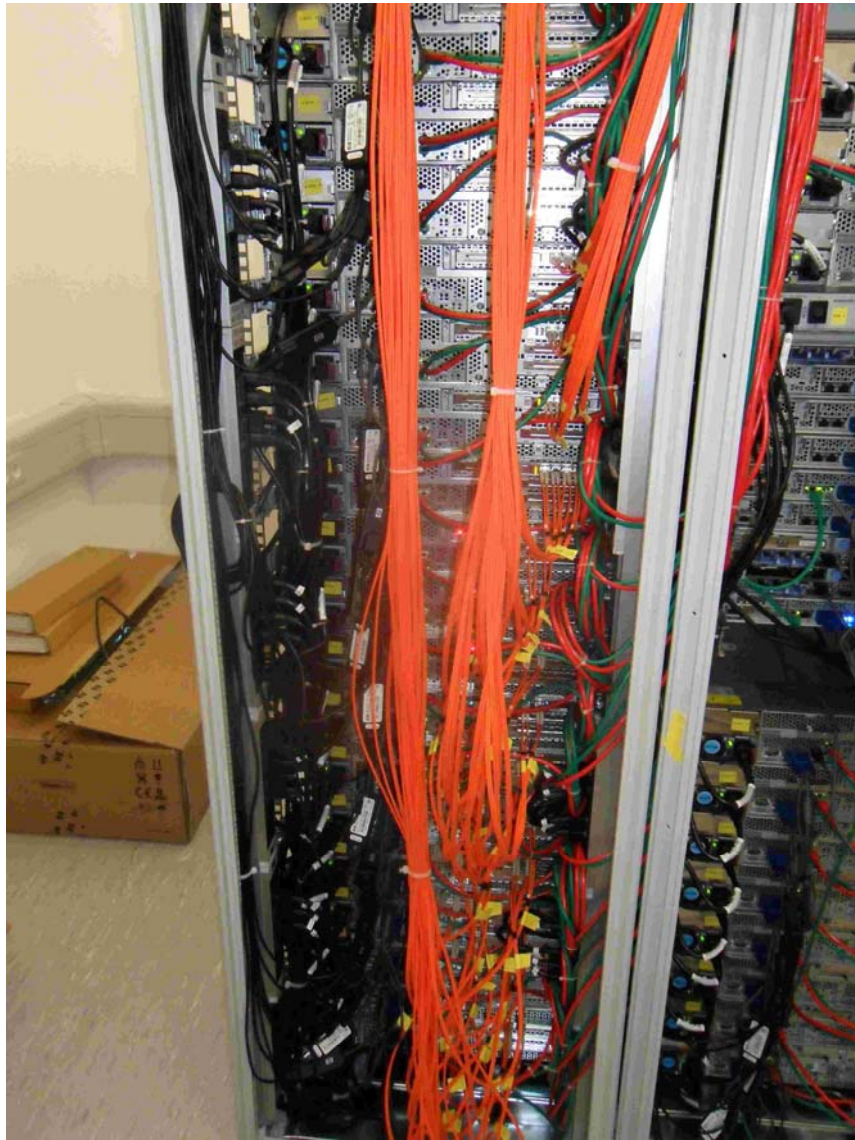
We operated it for 7 crystals, had to remove a carrier (39) due to malfunction (Damiano was on the help line)

FEE electronic

Main problem : ATCA crates

- We broke a power supply by “rebooting” the crate with unplugging-plugging
- Proper power switches were mounted, safer reboot
- Dino sent us power supply for the crate
- We did not installed them, never had to configure more than 7 crystals!

LINCO



For the moment we used onl LINCO1

➔ Operation like in Legnaro

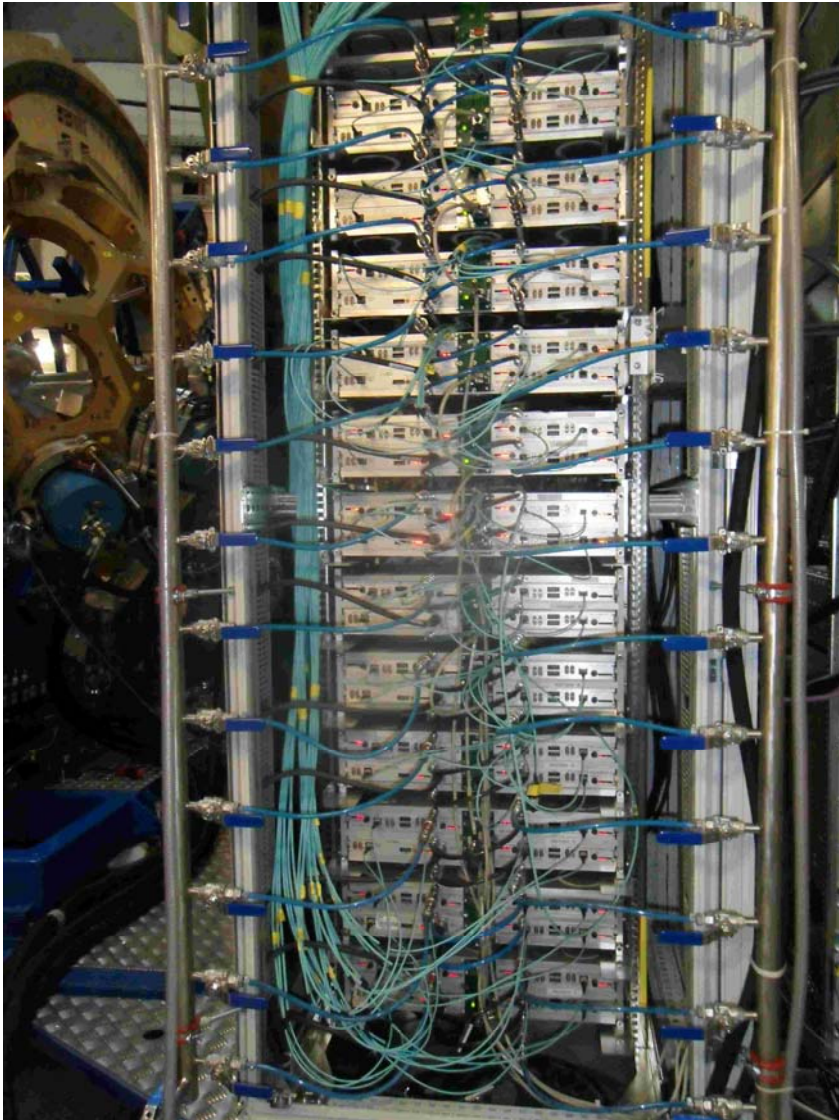
➔ Faster nodes means faster reboot
and loading NARVAL configuration

Final

Thanks to the collaboration for the support specially to the people who helped us either remotely or in site:

Bruno, Caterina, Damiano, Dino, Eric, Nicolas, Xavier L,

LINCO



Mounted on two towers
Mix of old and new digitizers
We broke one mechanically
One was not responding when plugged in

Considered not responsibility of the local FEE
Working Group? → shall this change?