



Status Forward Endcap EMC

PANDA Collaboration Meeting 21/1, GSI, Darmstadt, March 2021

Thomas Held

Ruhr-Universität Bochum
Institut für Experimentalphysik I

APD Submodule Manufacturing

- Submodule manufacturing and shipping proceeding (shipping 5 modules/2 weeks to Bonn, manufacturing frequency a little higher)
- 65 (of 193) APD submodules built so far (glued)
- 46 submodules shipped to Bonn for cosmics tests
- Transport to Jülich not yet started (restricted access from end of last year on), foreseen to start March 26.
- Several new students now involved in submodule manufacturing

APD Screening

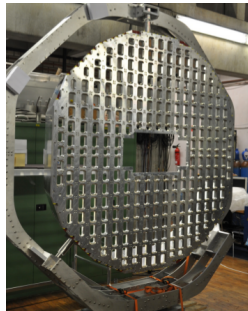
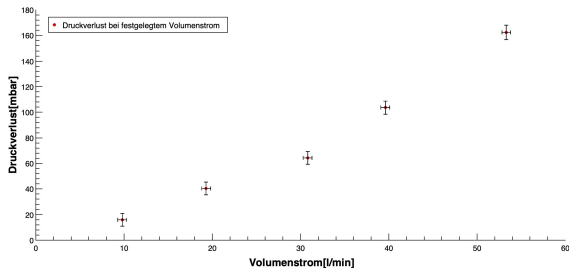
- APD screening ongoing regularly
 - ▶ Currently still in weekend mode (one shift a day)

- Current numbers:
 - ▶ Screened - irradiated - screened: 19500 - 66 % of whole target calorimeter

 - ▶ Matched (on demand): 4000
(80+ FWEC APD submodules plus complete BWEC)

Cooling: Pressure Drop Measurements (Lower) U-Turns

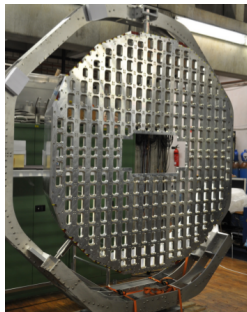
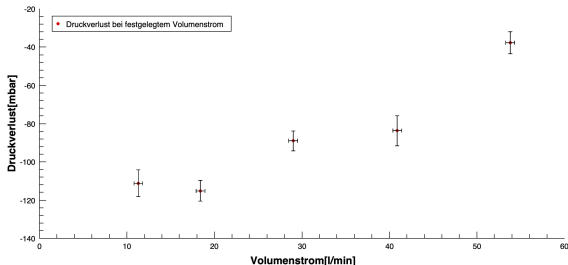
- Pressure drop as a function of flow



- U-turns: In- and outlet (manometers) at same height (dynamical pressure drop only)
- Simulation: 5 mbar pressure drop at 4 l/min ($\Delta T = 1$ K)
- Lowest reliably measureable flow: 10 l/min
- Extrapolation (plot): about 4 mbar pressure drop at 4 l/min

Cooling: Pressure Drop Measurements Backplane Side

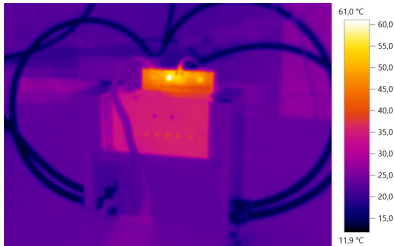
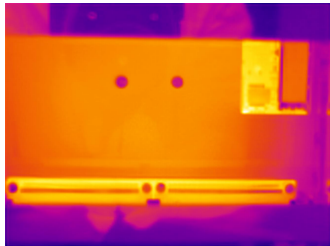
■ Pressure drop as a function of flow



- U-turns: manometers at different heights ($\Delta h = 1.3 \text{ m}$)
- Simulation: 25 mbar dynamical pressure drop at 18 l/min ($\Delta T = 1 \text{ K}$)
- Plot: $-116(\pm 5) + 130 \text{ mbar} = 14 (\pm 5) \text{ mbar}$ pressure drop at 18 l/min

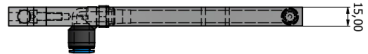
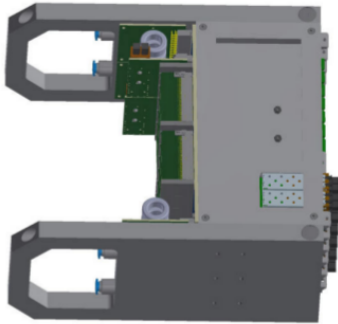
SADC Crates

- Thermal coupling of heat dissipating components by silicon foam heat transfer pads to aluminum plates on top and bottom
- Thermal images taken with blackened aluminum plates (in order to prevent reflection)
- No hot-spots on aluminum plates
- Internal temperature readout of FPGA: 45(55) °C, safe!

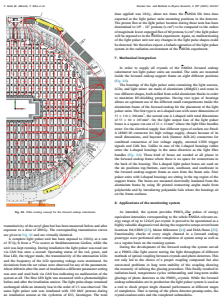
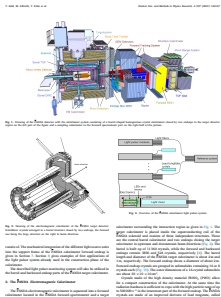


SADC Crates

- Cooling flanges covering SADC boards and power supplies
- Complete thermal test of crates (6- and 15-SADC crates)
- Tests with simple cooling line routing (also sufficient for full load?)



- NIM A paper about \bar{P} ANDA light pulser system published



- Free access until April, 21st:
<https://authors.elsevier.com/a/1cgA7cPqbhDyc>

Summary

- Construction of Forward Endcap proceeds (medium speed)
- Production of submodules:
 - ▶ 65 APD submodules so far (about a third of the total number of APD modules)
 - ▶ Bochum U regulations yet unchanged: Students allowed to work (picking of APD sets, building submodules)
 - ▶ Transport of submodules to Jülich starting end of March
- Work progress may increase as Covid-19 regulations change, though