

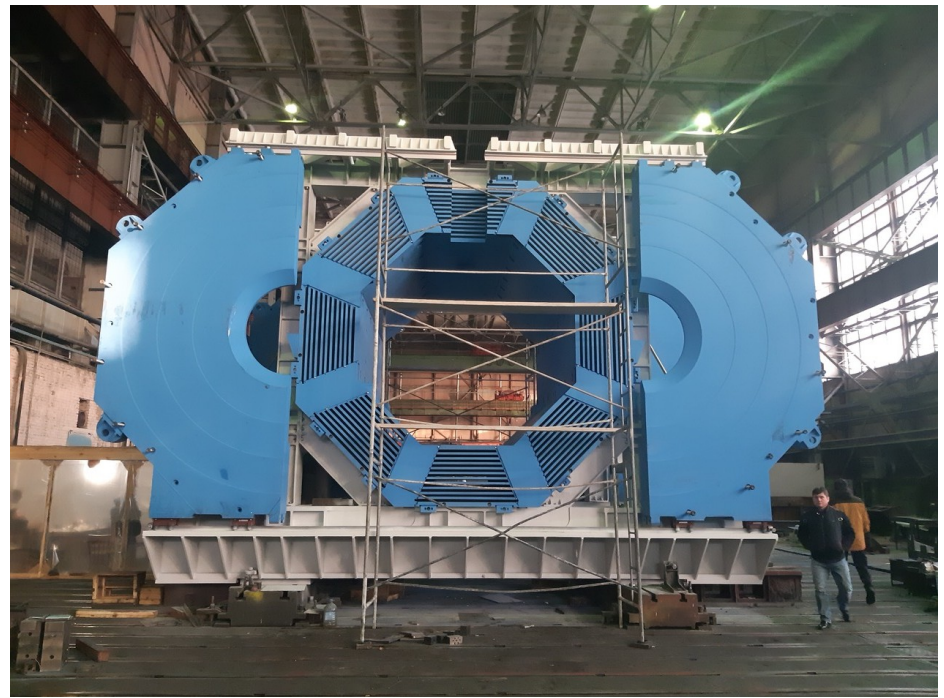
Update additional solenoid supports
and AUX platform

Contents:

1. Requirements
2. Example for the additional supports at the solenoid
3. Update and mechanical connections of the Aux platform

1. Requirements

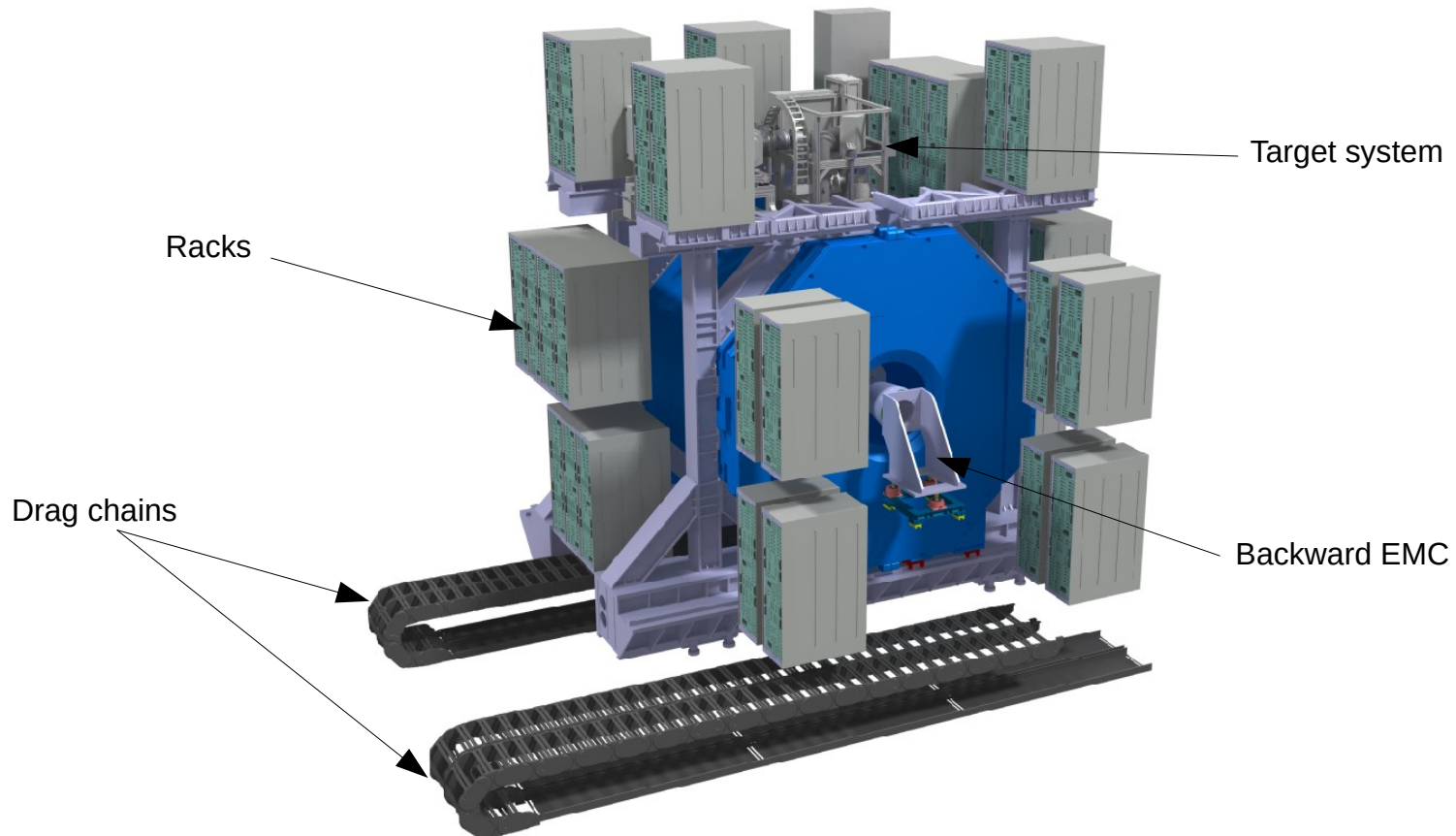
Recently, the colleagues from BINP and SET in Novosibirsk did a great job by assembling the magnetic yoke.



On behalf of the entire integration team, I would like to thank and congratulate you for this great success .

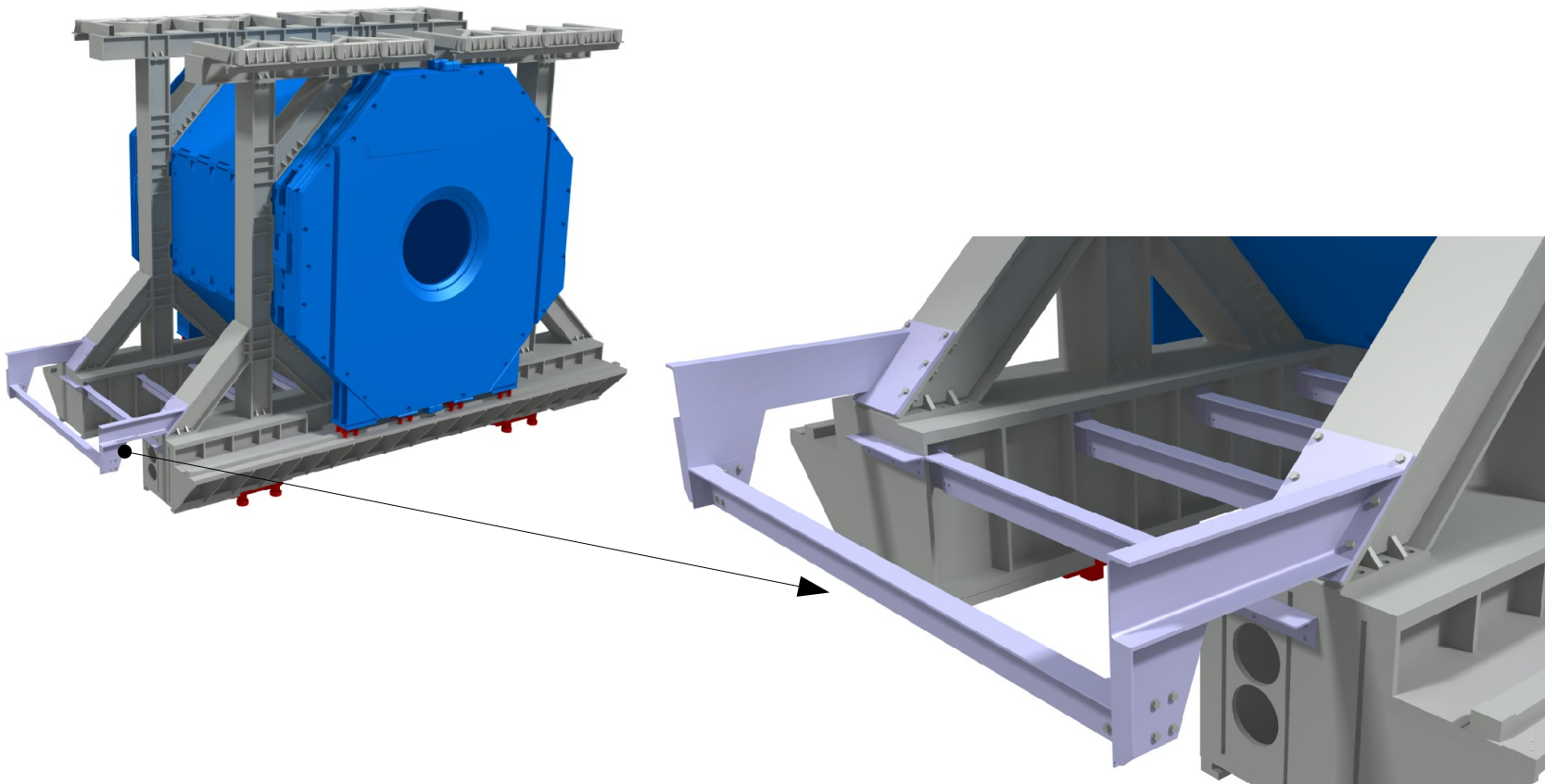
1. Requirements

For various components in the area of the solenoid, we need additional supports. This components includes mainly the Racks, the target system and the Backward EMC.



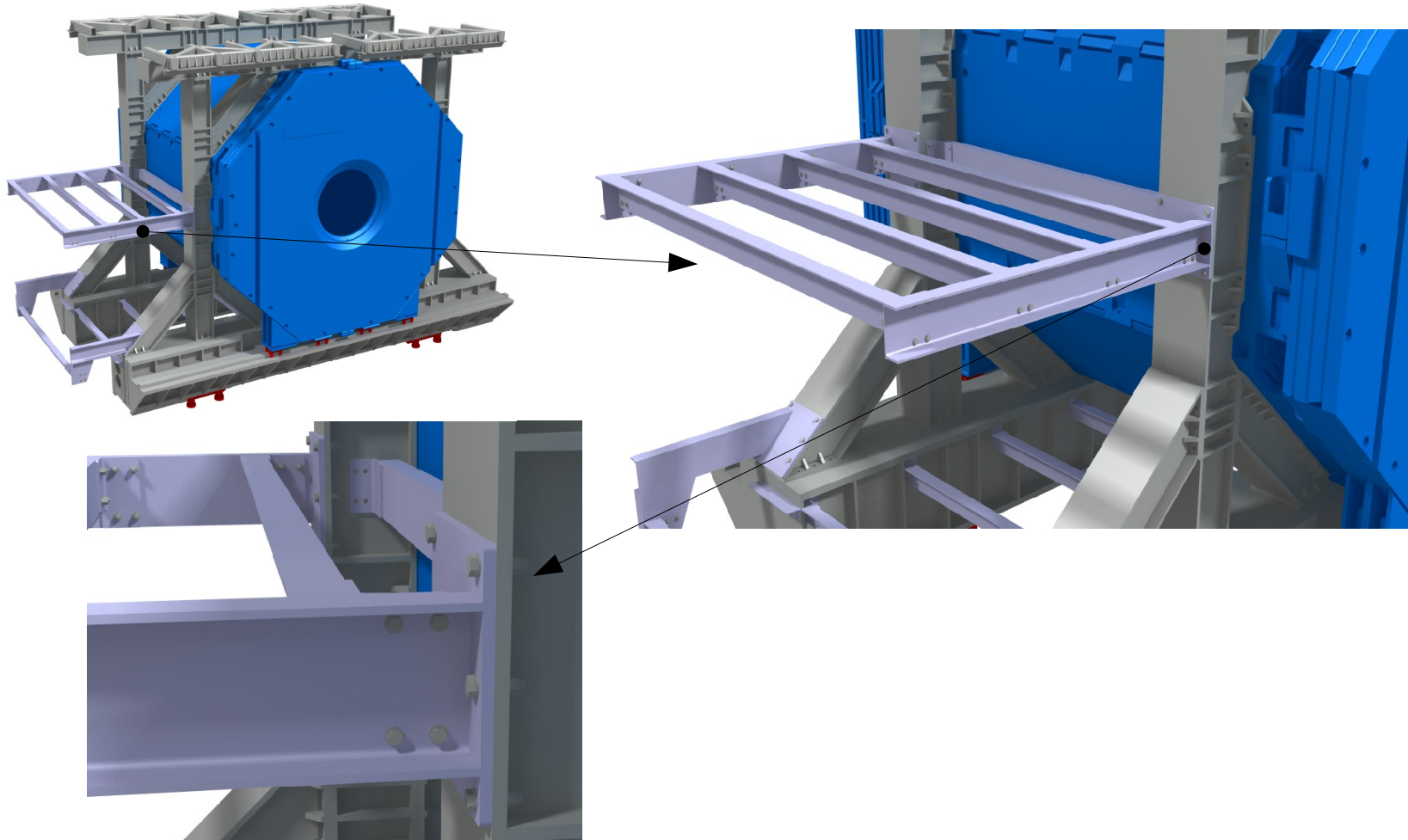
2. Example for the additional supports at the solenoid

The following slices shows a first example or suggestion how to realize this additional structures. In the first step various consoles and angle profiles will be connect to the yoke via screws.



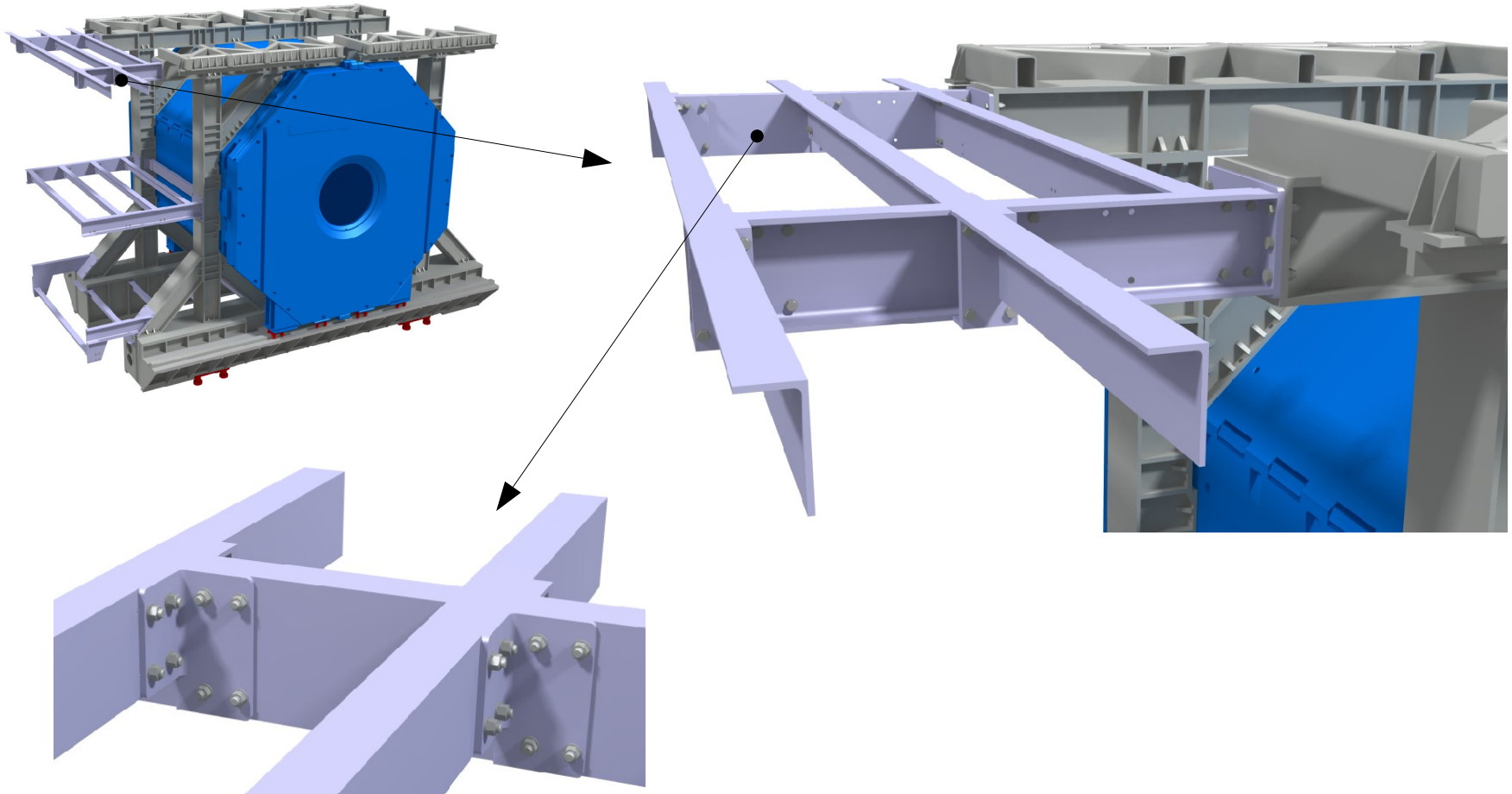
2. Example for the additional supports at the solenoid

In a similar way consoles and profiles will mount on the next level.



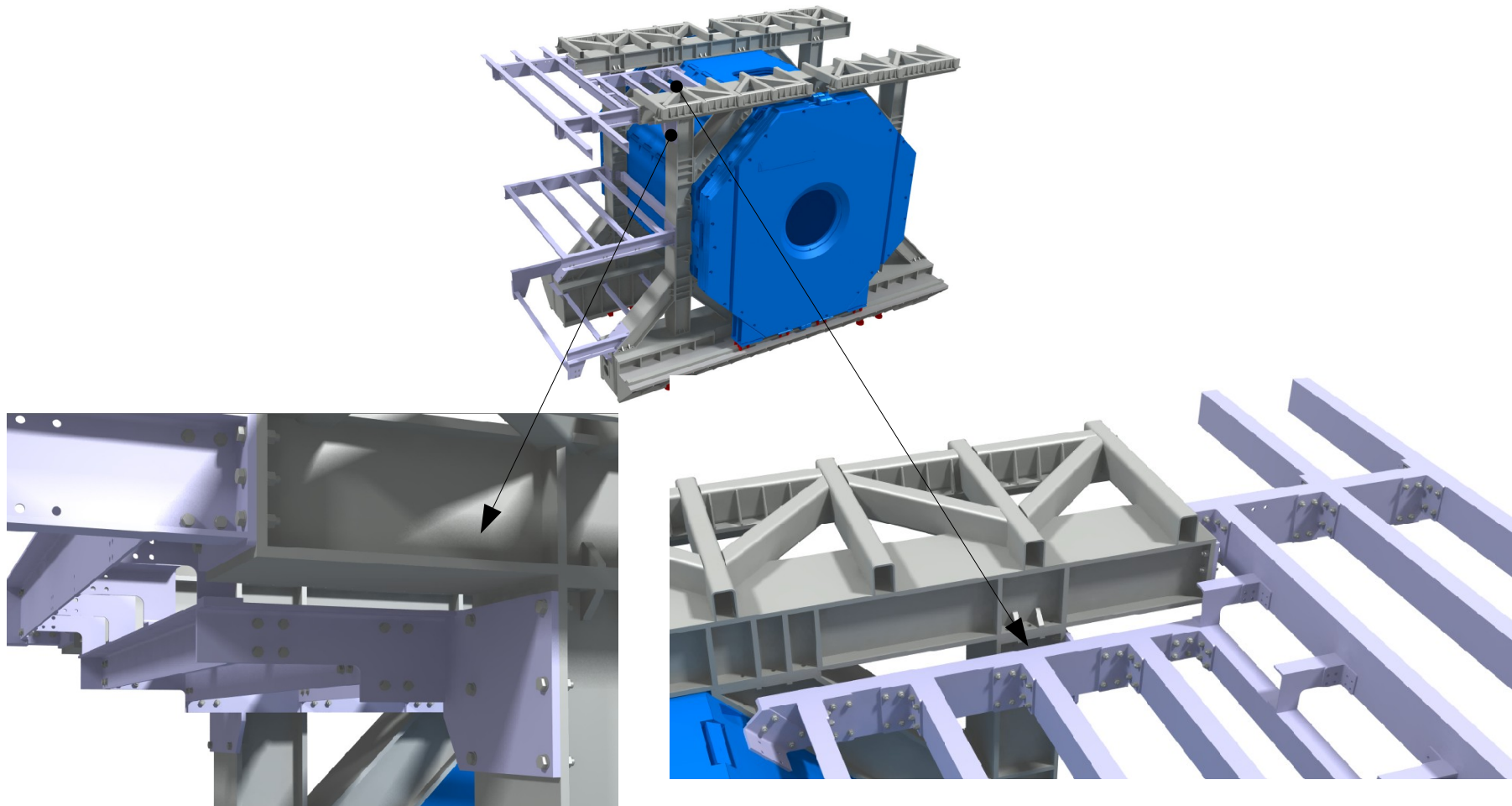
2. Example for the additional supports at the solenoid

The third consoles are at the height of the solenoid top.



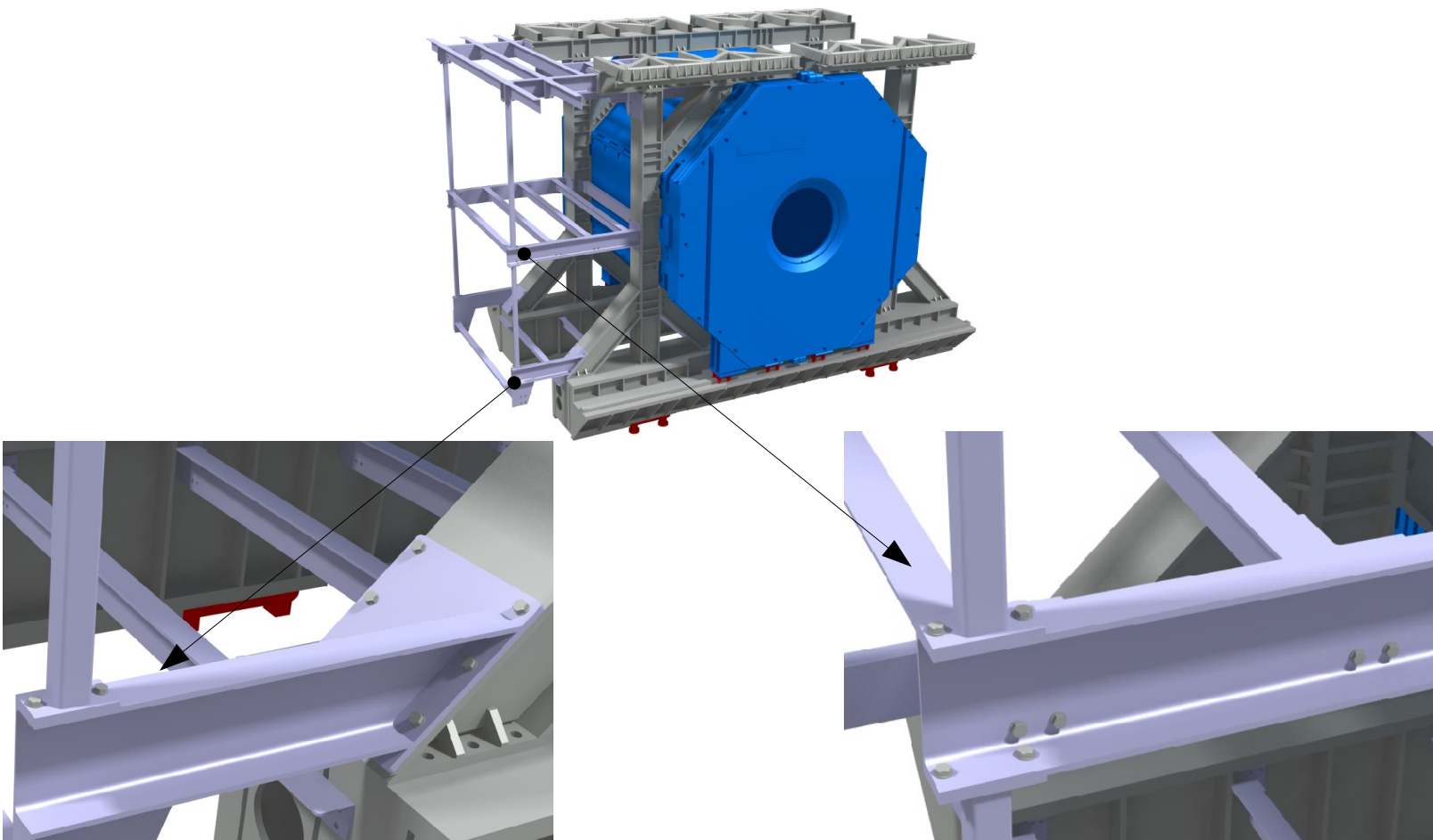
2. Example for the additional supports at the solenoid

An additional support has the purpose to carry parts of the target system.



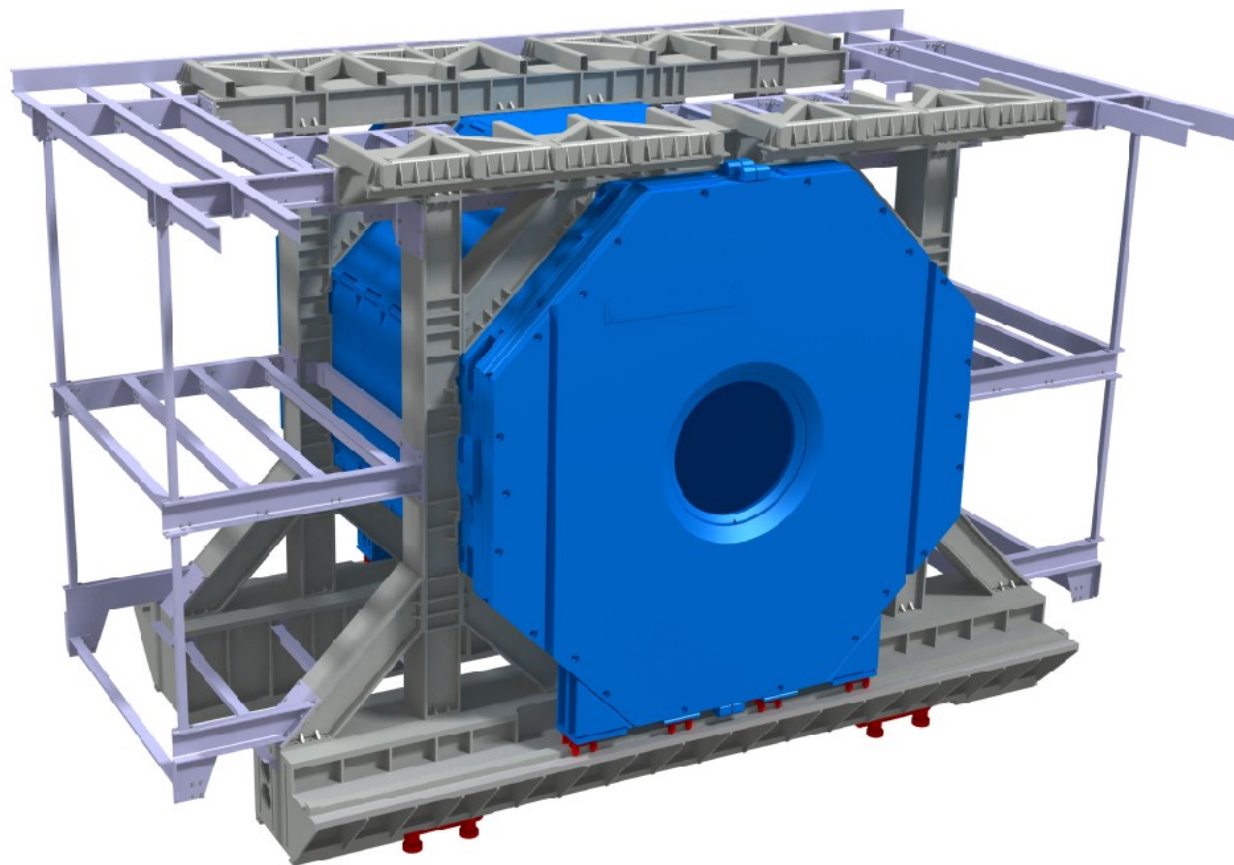
2. Example for the additional supports at the solenoid

For more stability the different level can be connected with additional braces.



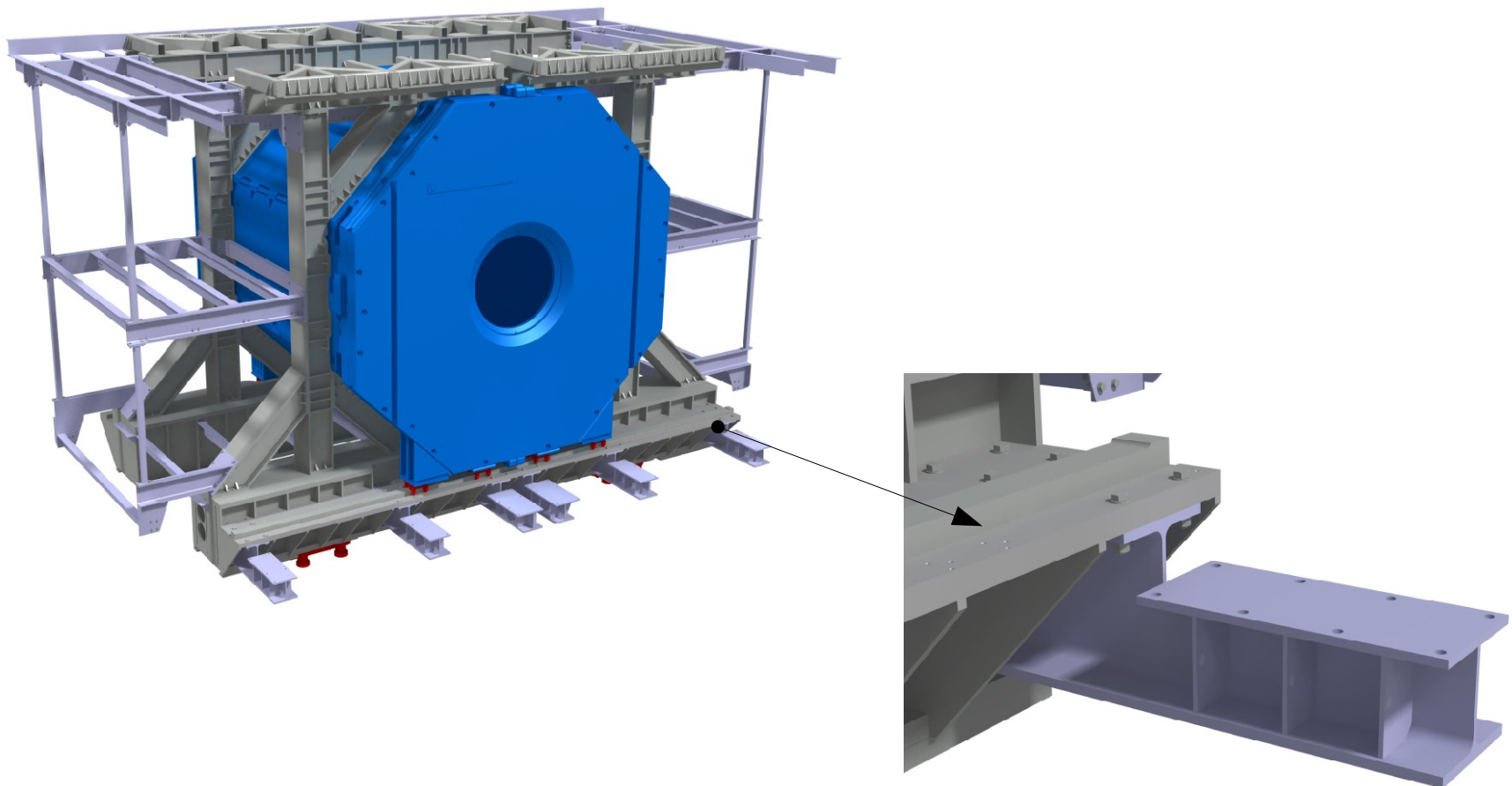
2. Example for the additional supports at the solenoid

Except of some details, the same supports will be installed on the other side of the solenoid yoke. In additional, a profile which connect bot sides will be installed for a later attachment for railings.



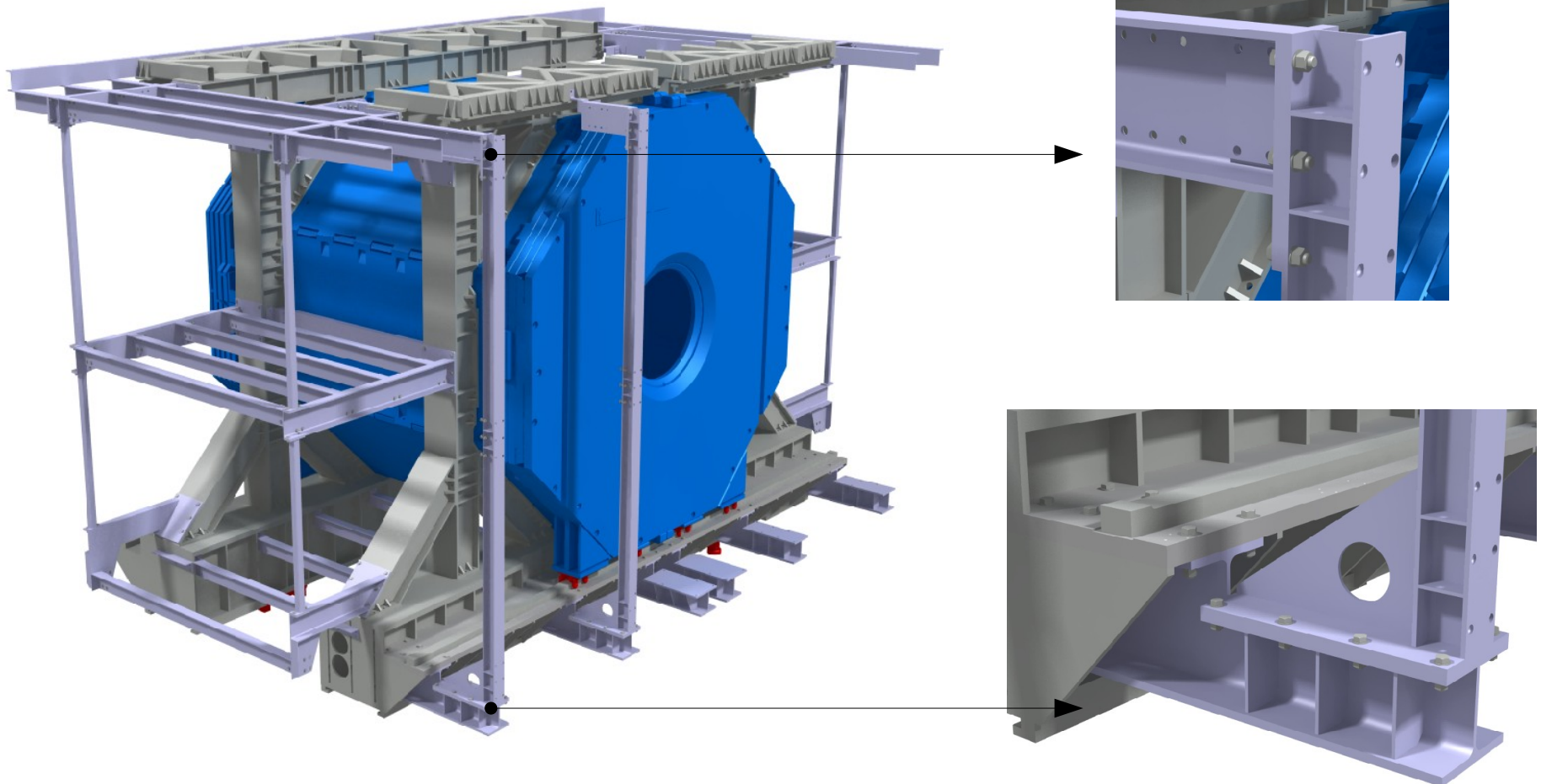
3. Update and mechanical connections of the Aux platform

For the attachments of the AUX platform, six cantilever beams has to be installed.



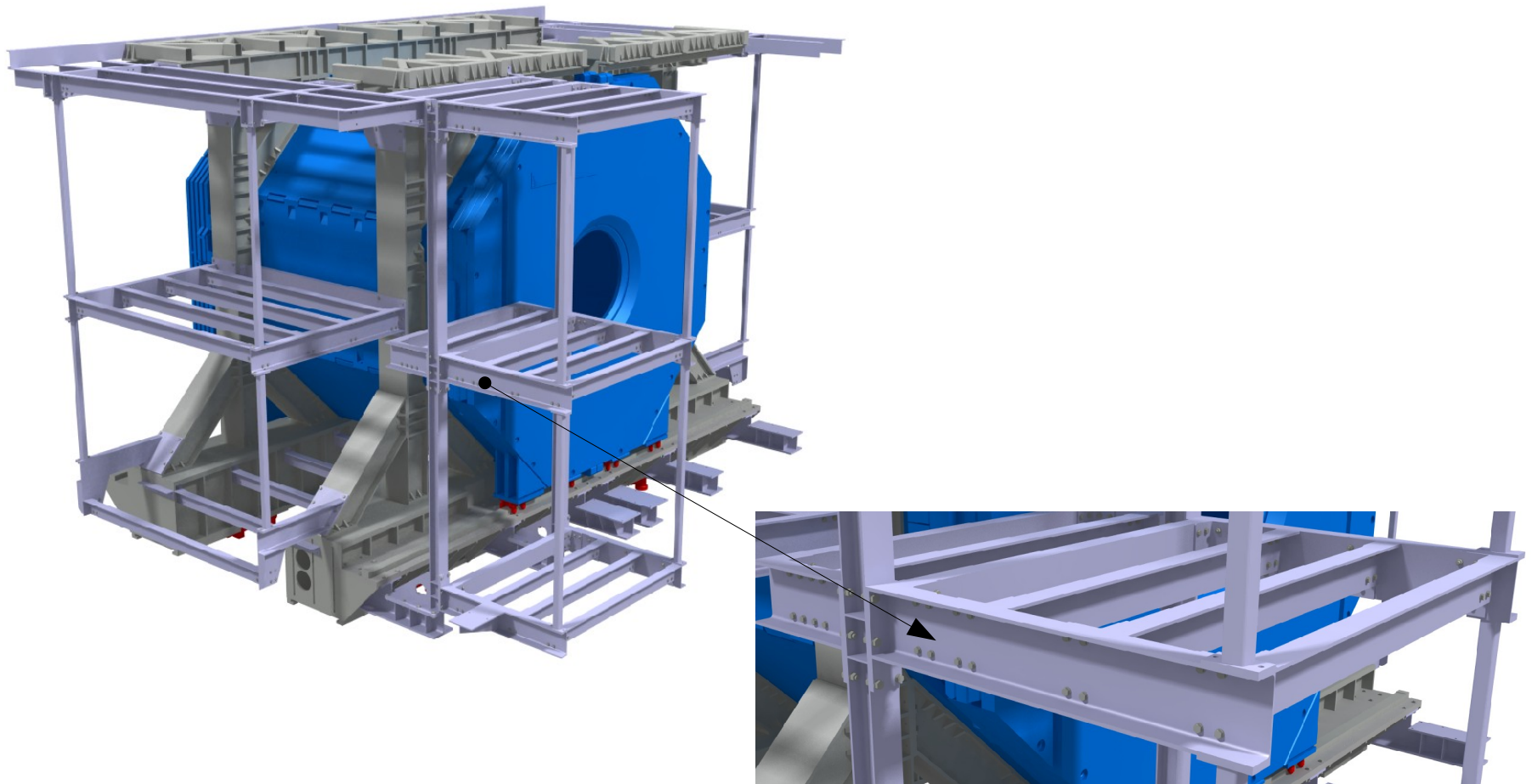
3. Update and mechanical connections of the Aux platform

Next to this, two vertical supports will be attached to the cantilever beams and connected with the upper supports.



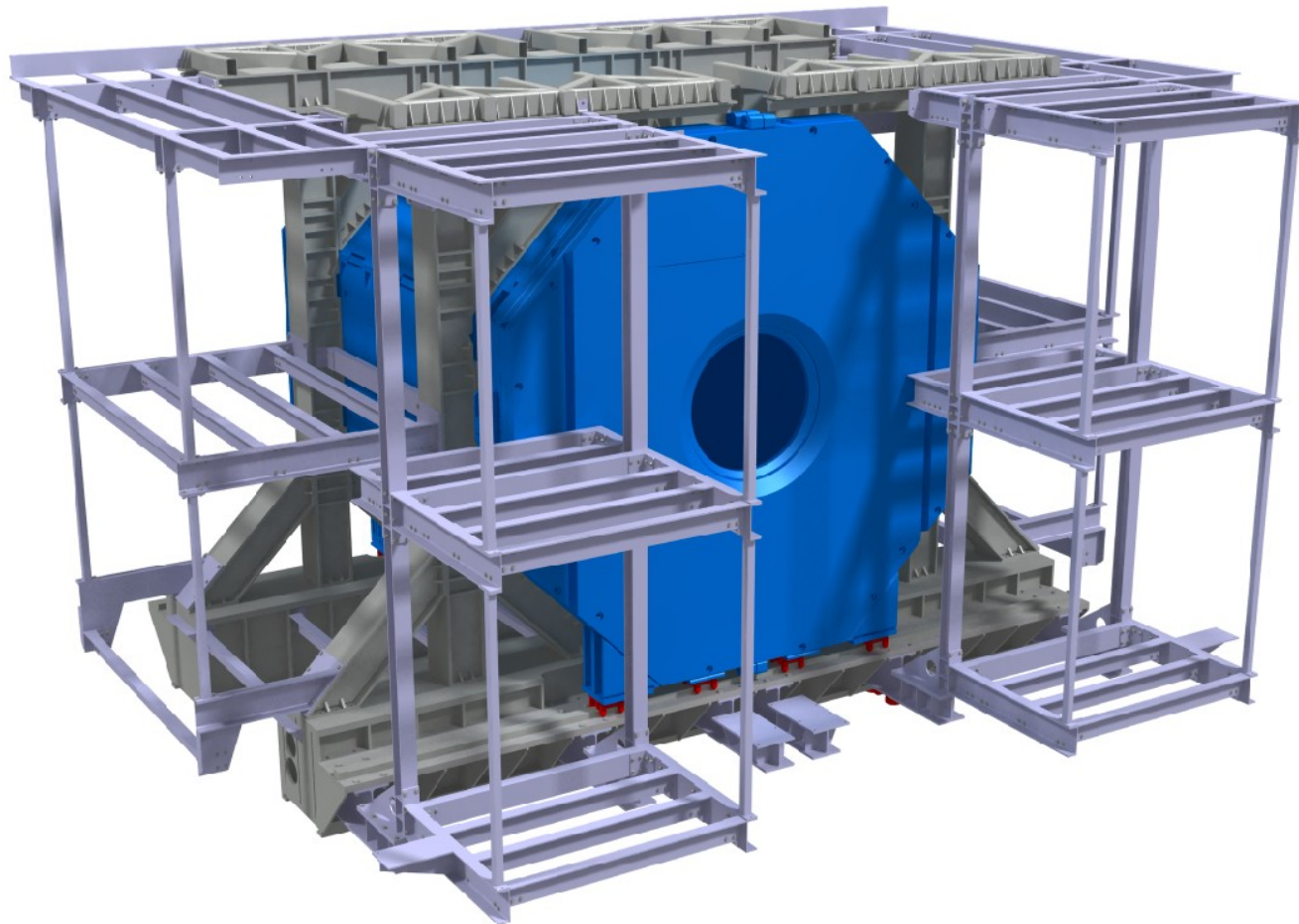
3. Update and mechanical connections of the Aux platform

Then, several consoles and profiles will be attached to the vertical supports via screws.



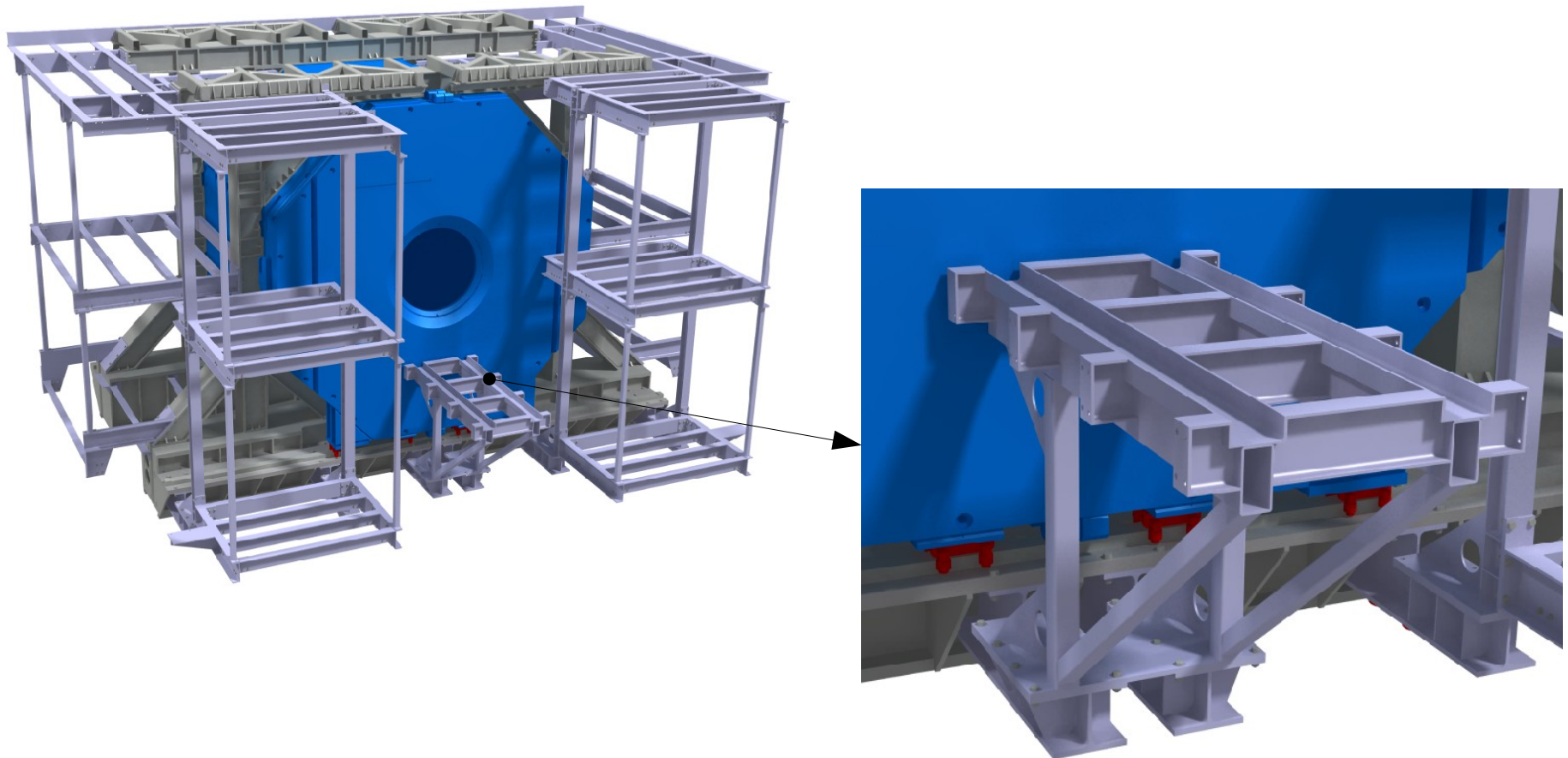
3. Update and mechanical connections of the Aux platform

Nearly the same supports will be installed on the other side of the solenoid yoke.



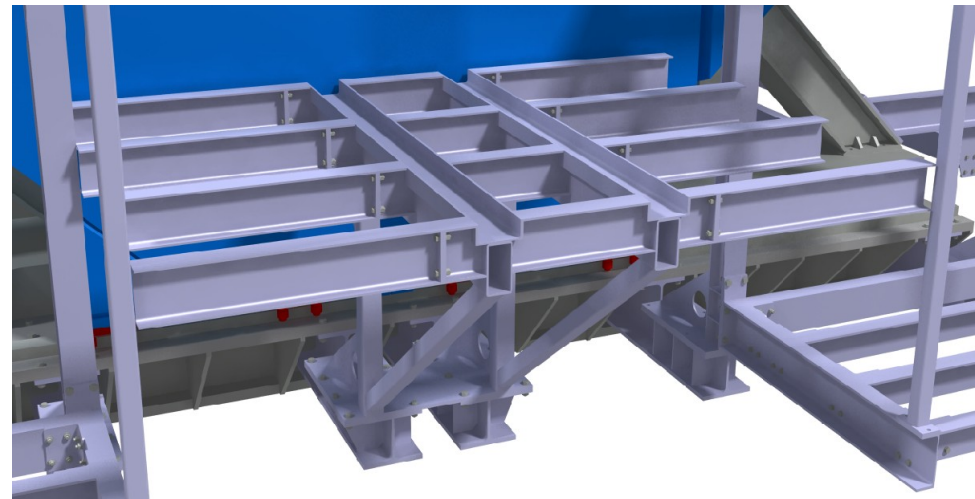
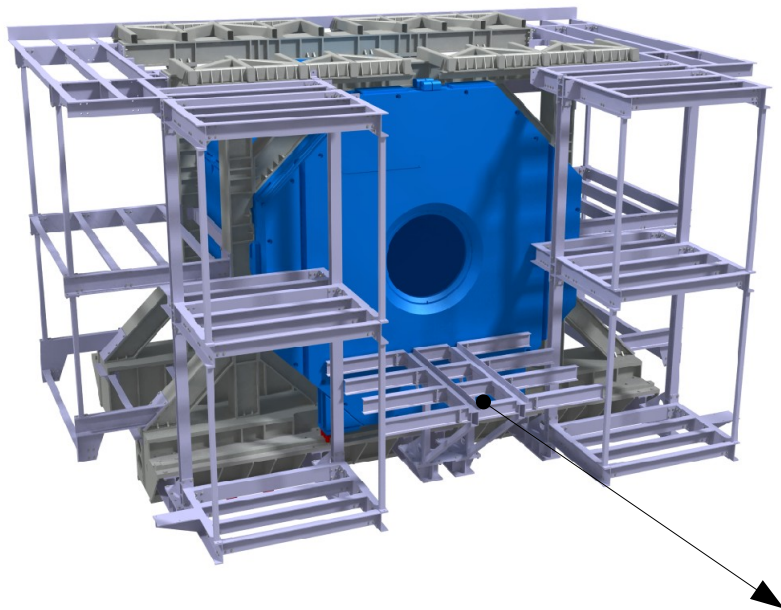
3. Update and mechanical connections of the Aux platform

For the middle supports, a welded console will be installed.



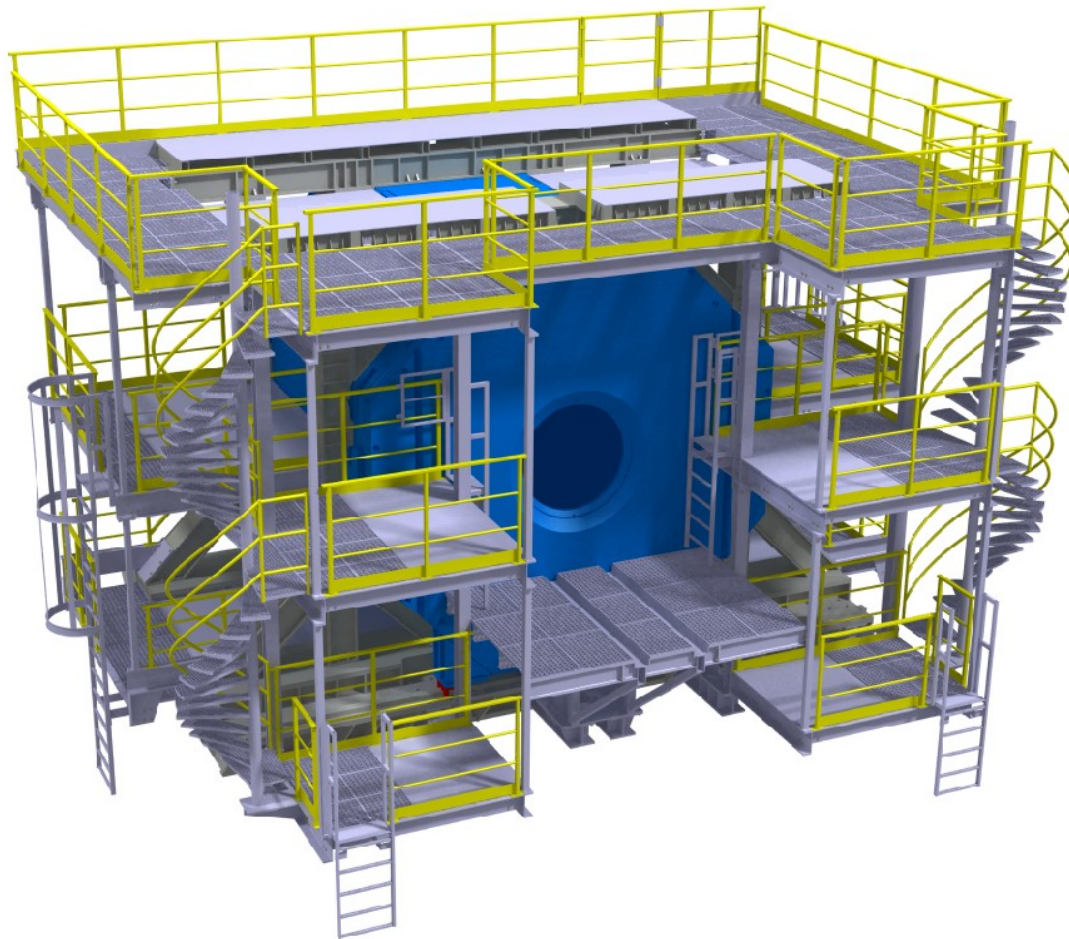
3. Update and mechanical connections of the Aux platform

For installation procedure and access to the platform, cantilever beams will be screwed to the welded console.



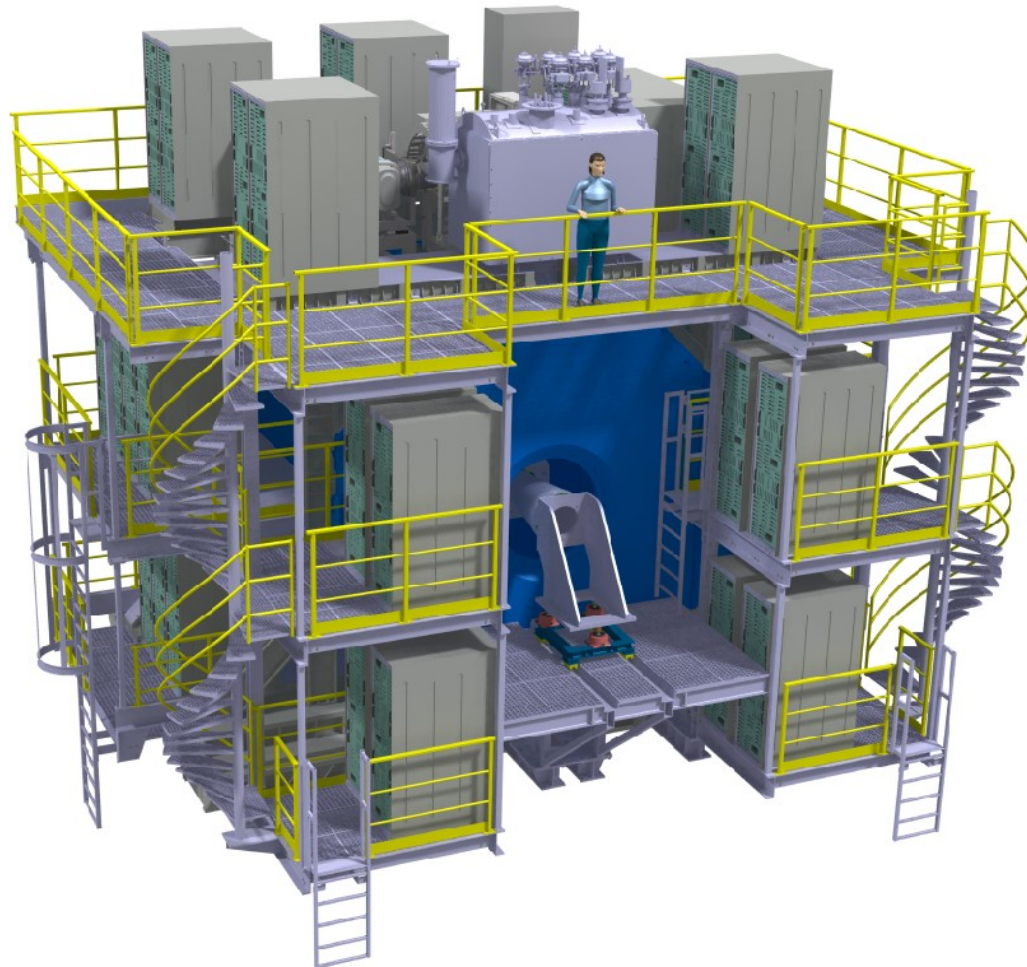
3. Update and mechanical connections of the Aux platform

For a safety access to the platforms spindle stairs, letters, railings and gratings has to be installed.



3. Update and mechanical connections of the Aux platform

The lower picture shows the supports with the associated components.



Conclusions:

- in principal, it should be possible to attache additional supports to the yoke without much after work on the existing structures
- We have to proof that the additional supports will not compromise the static stability of the yoke
- The AUX platform can also be used for the access to the screws of the upstream doors

Thank you for your attention!