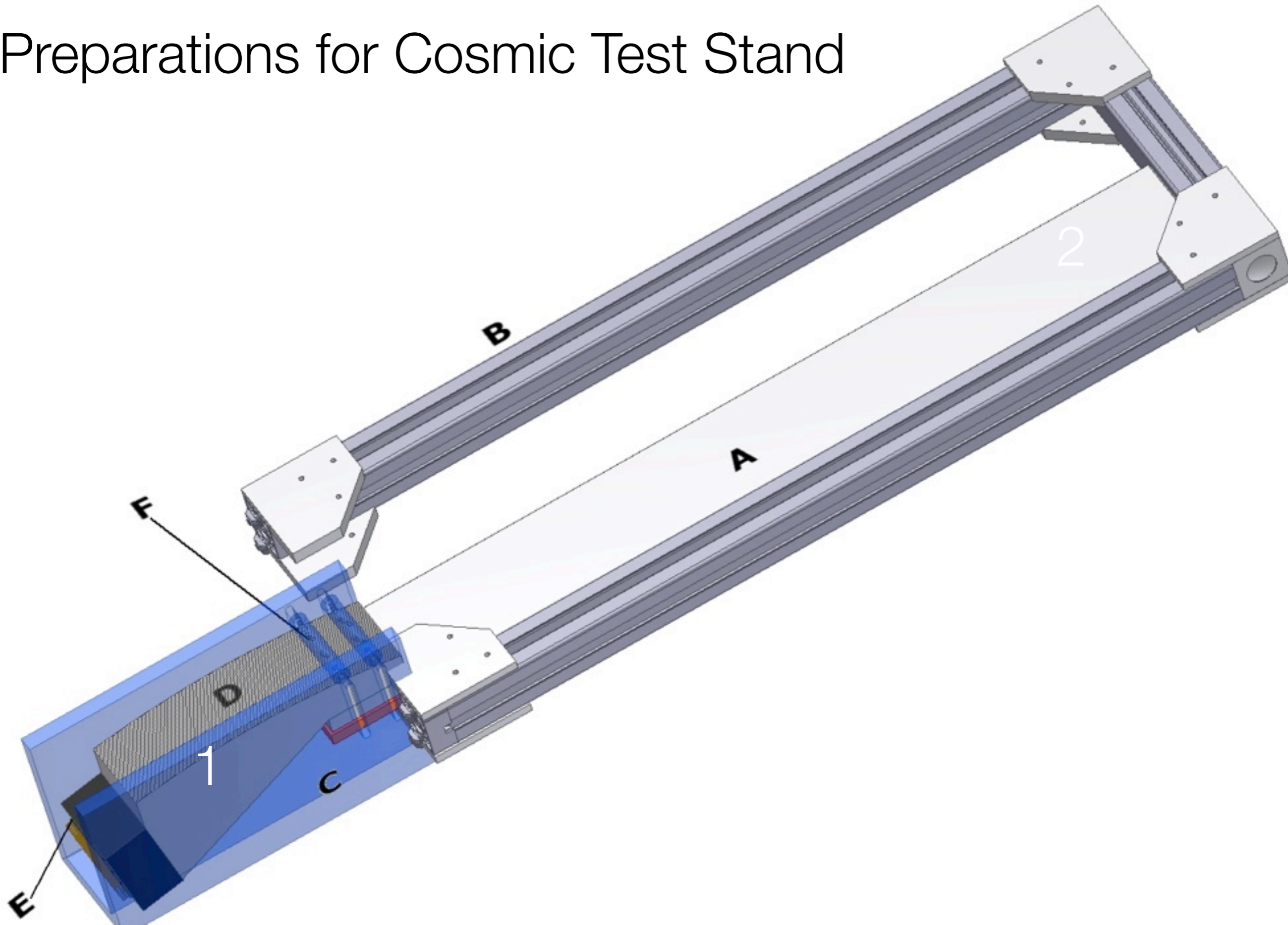


Status Report - University of Glasgow

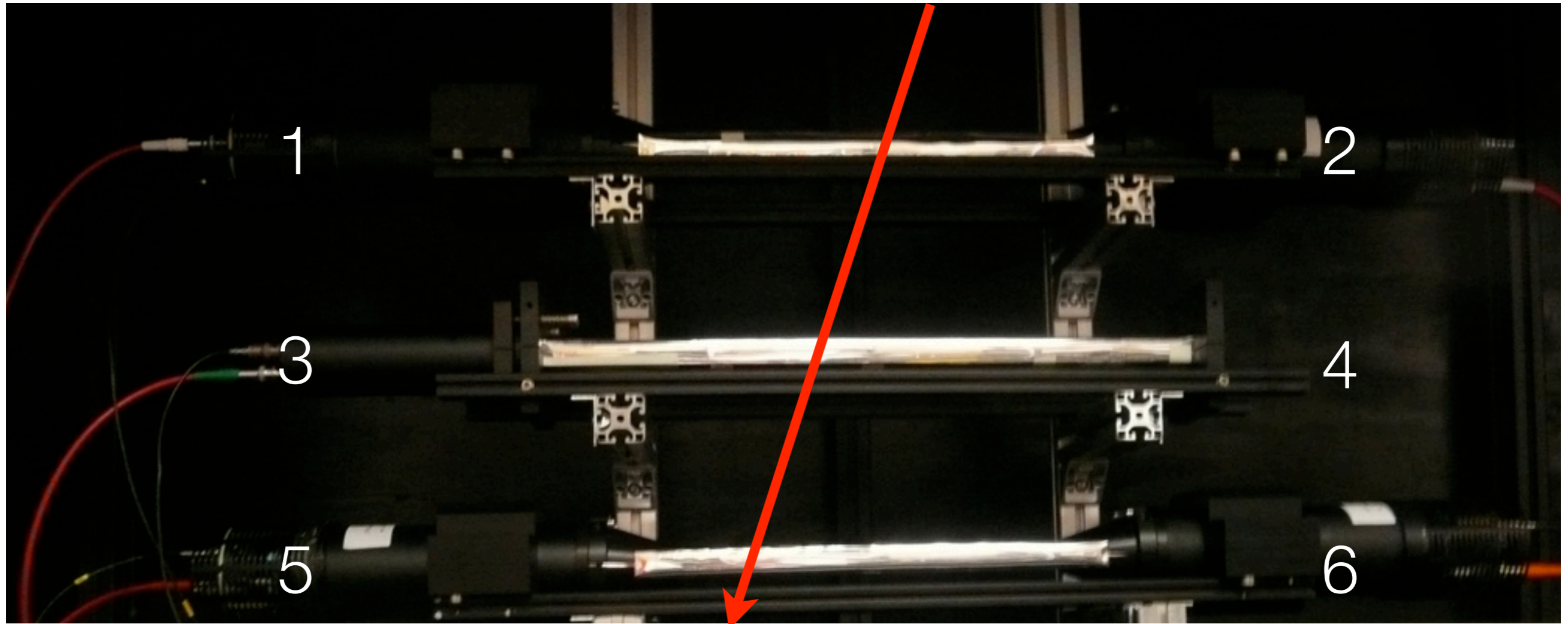
Bjoern Seitz, University of Glasgow
PANDA Collaboration meeting KVI Groningen
31 August 2010



Preparations for Cosmic Test Stand



Preparations for Cosmic Test Stand

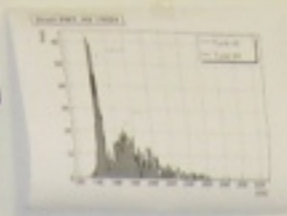


$$(t_1 + t_2) + (t_5 + t_6) - 2(t_3 + t_4) = \text{const}$$

$$\sigma((t_1 + t_2) + (t_5 + t_6) - 2(t_3 + t_4)) = \sqrt{8}\sigma_{\text{PMT}}$$

PMT Testing

→ 1900V HV
→ < 60 Time of low



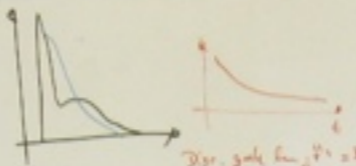
Problem
↓
RETURNING OFF/ON
↓
CITY

Check 50Ω termination
on Oscilloscope!

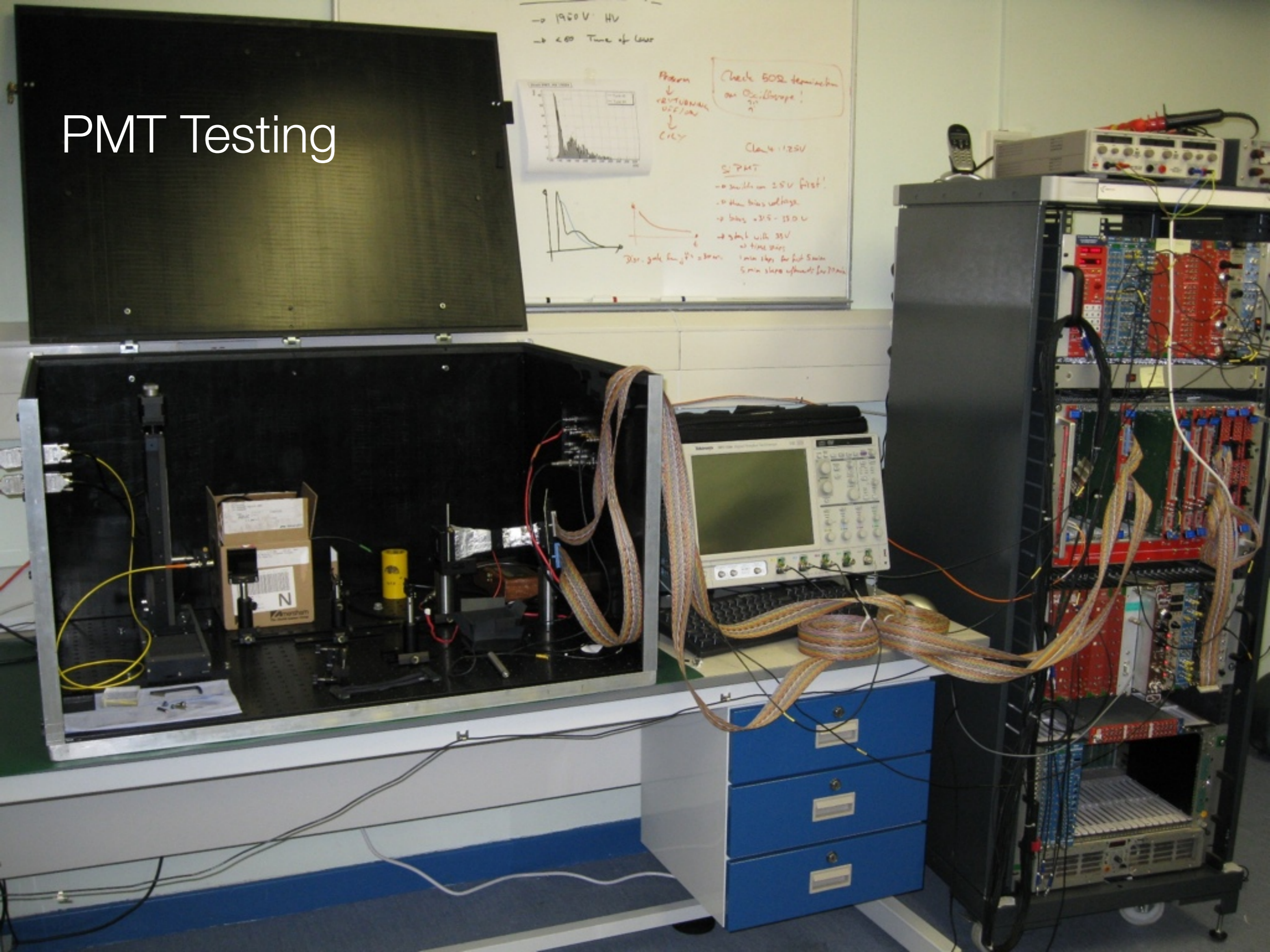
Class 1125V

SI PMT

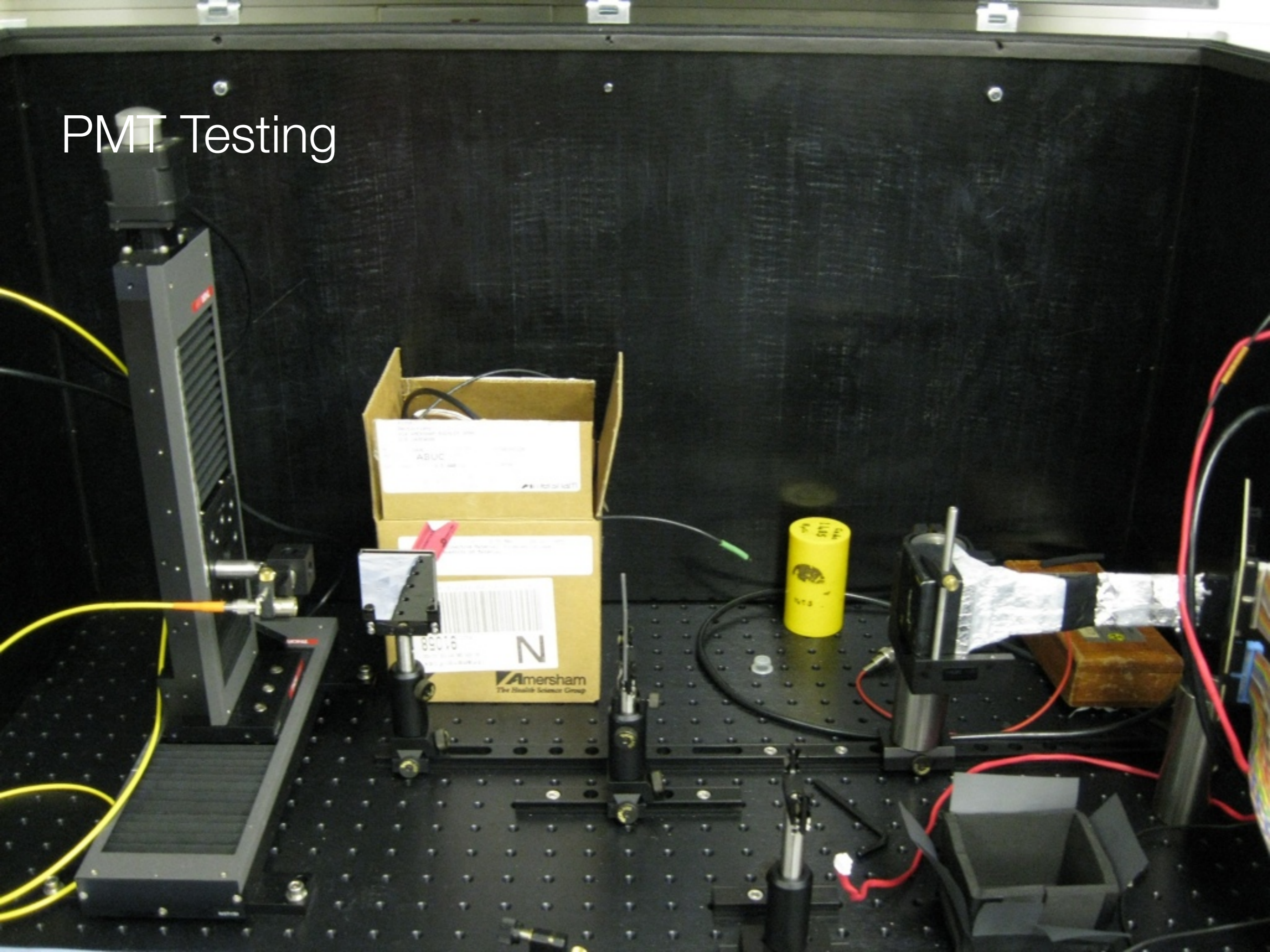
- switch on 25V first!
- then bias voltage
- bias = 25 - 250V
- start with 35V
- time gate
- 1 min steps for first 5 min
- 5 min steps afterwards for 27 min

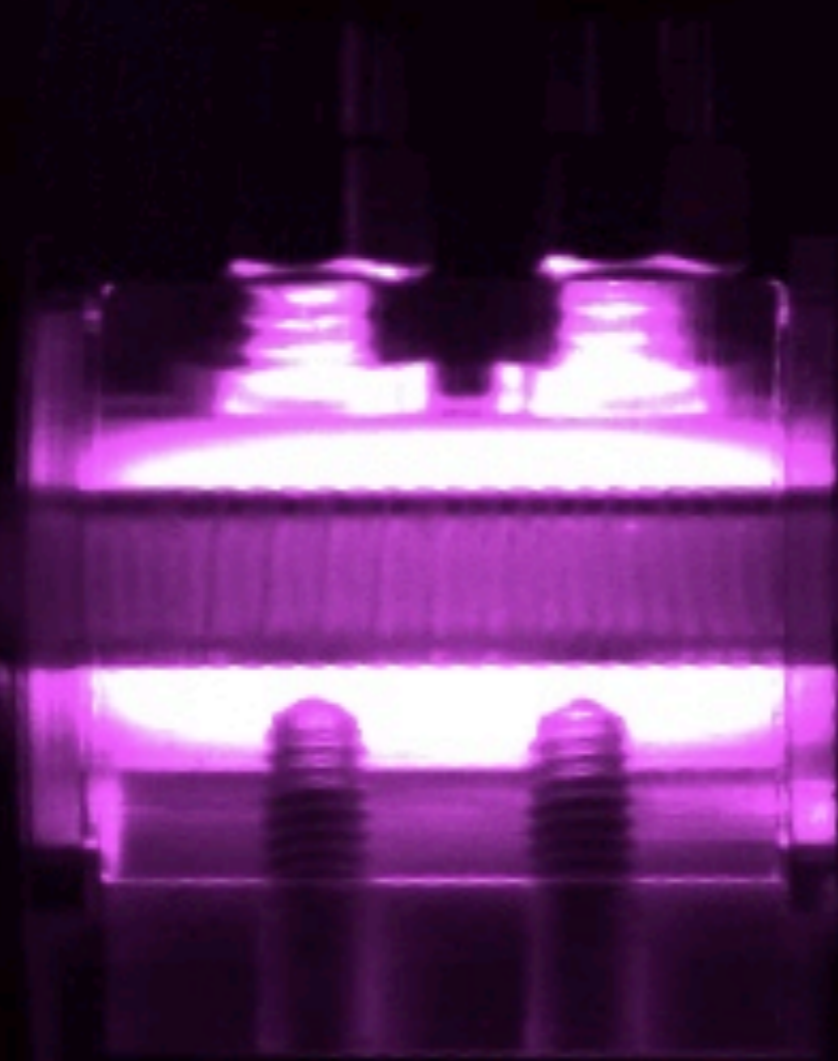


Dist. gate length = 20mm

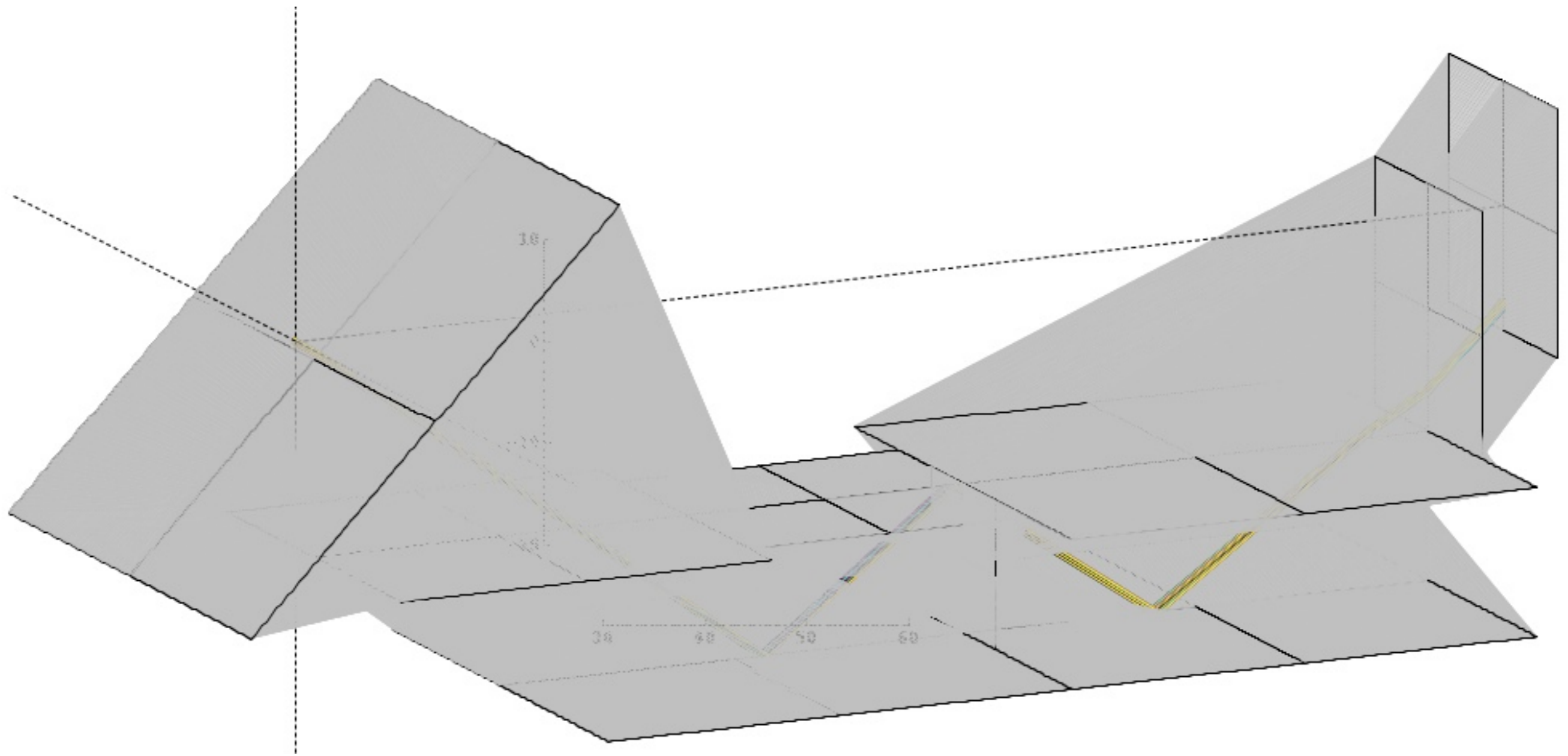


PMT Testing

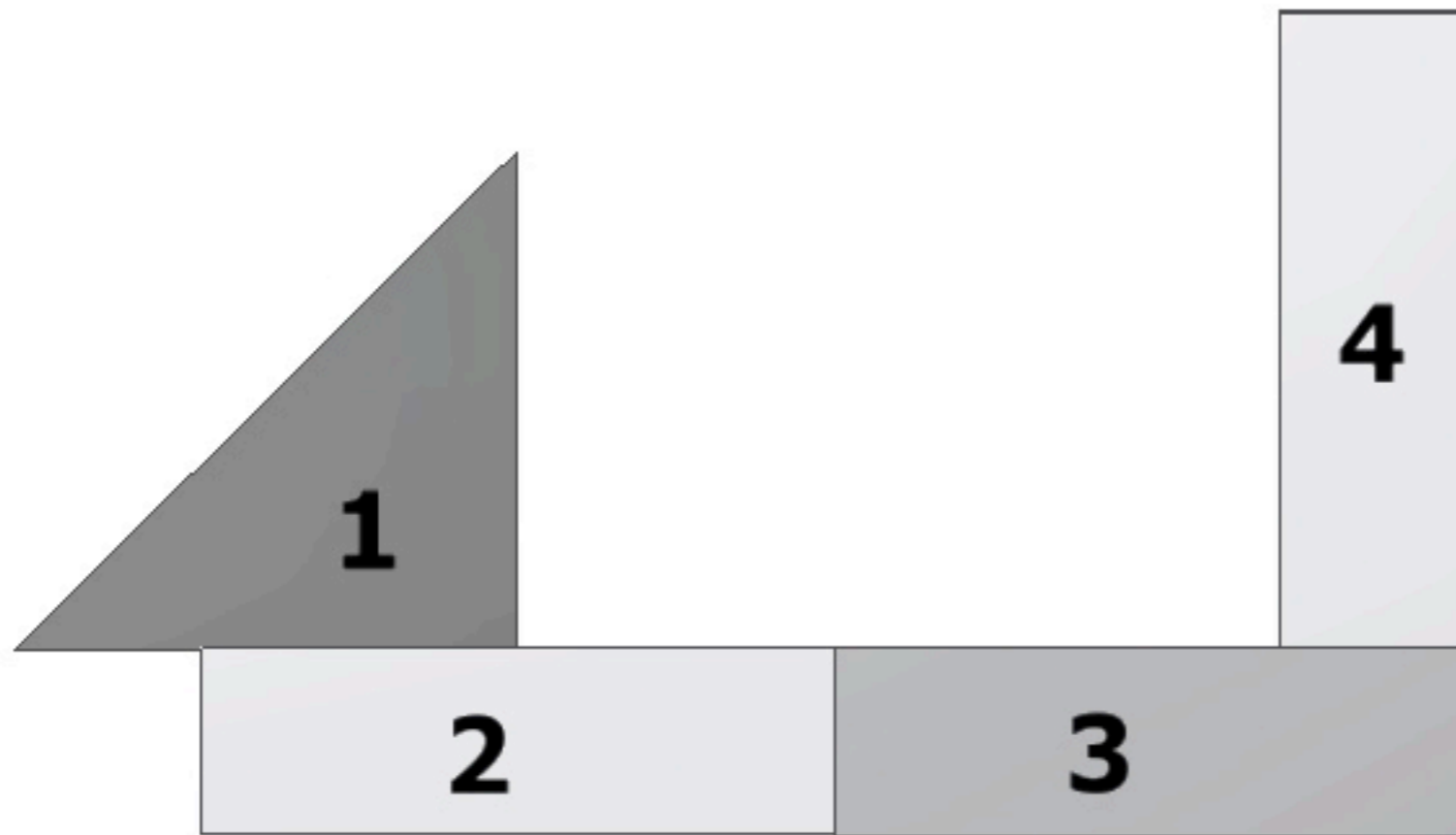




Dispersion Correction Set-up

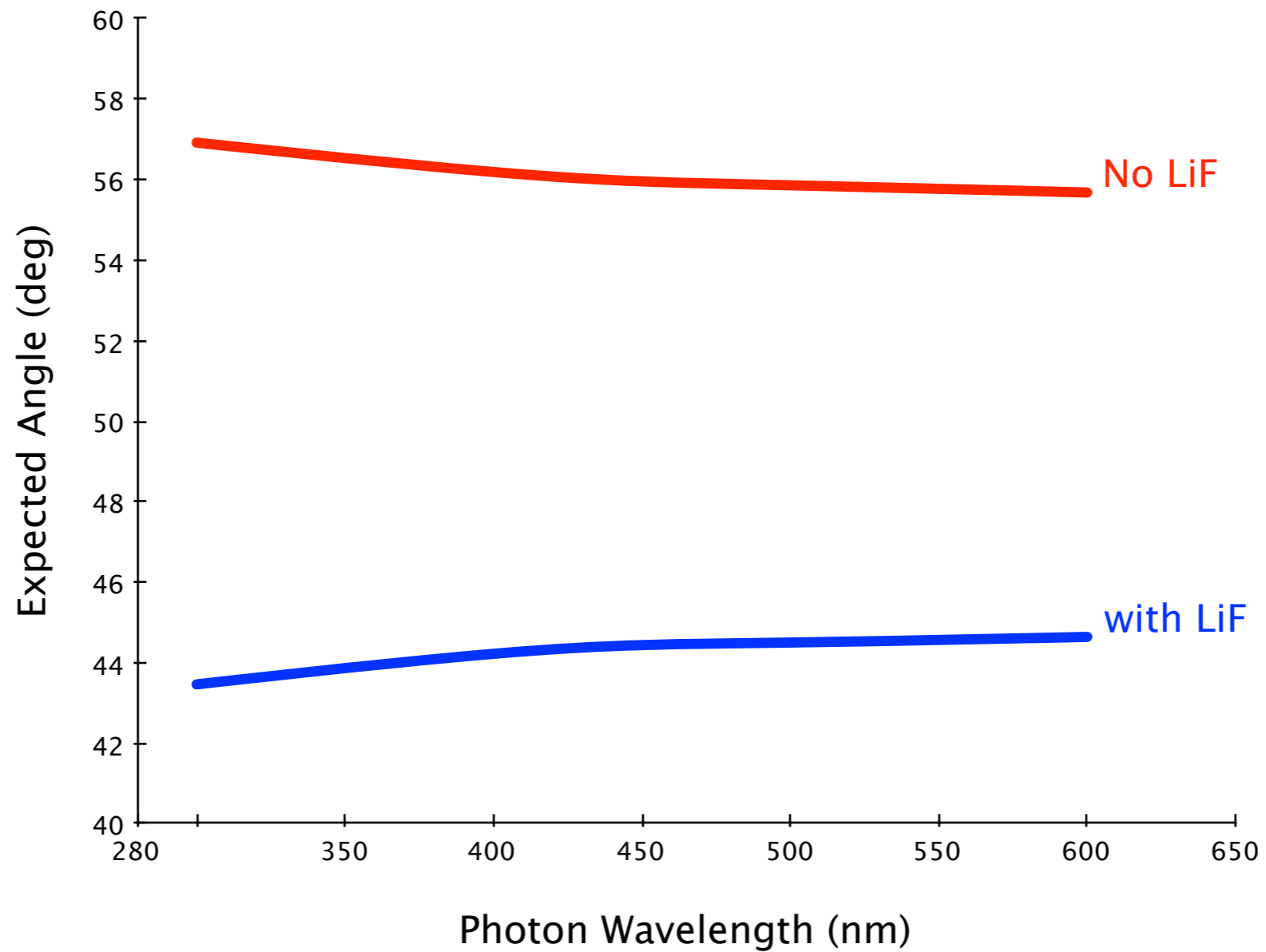


Dispersion Correction Set-up

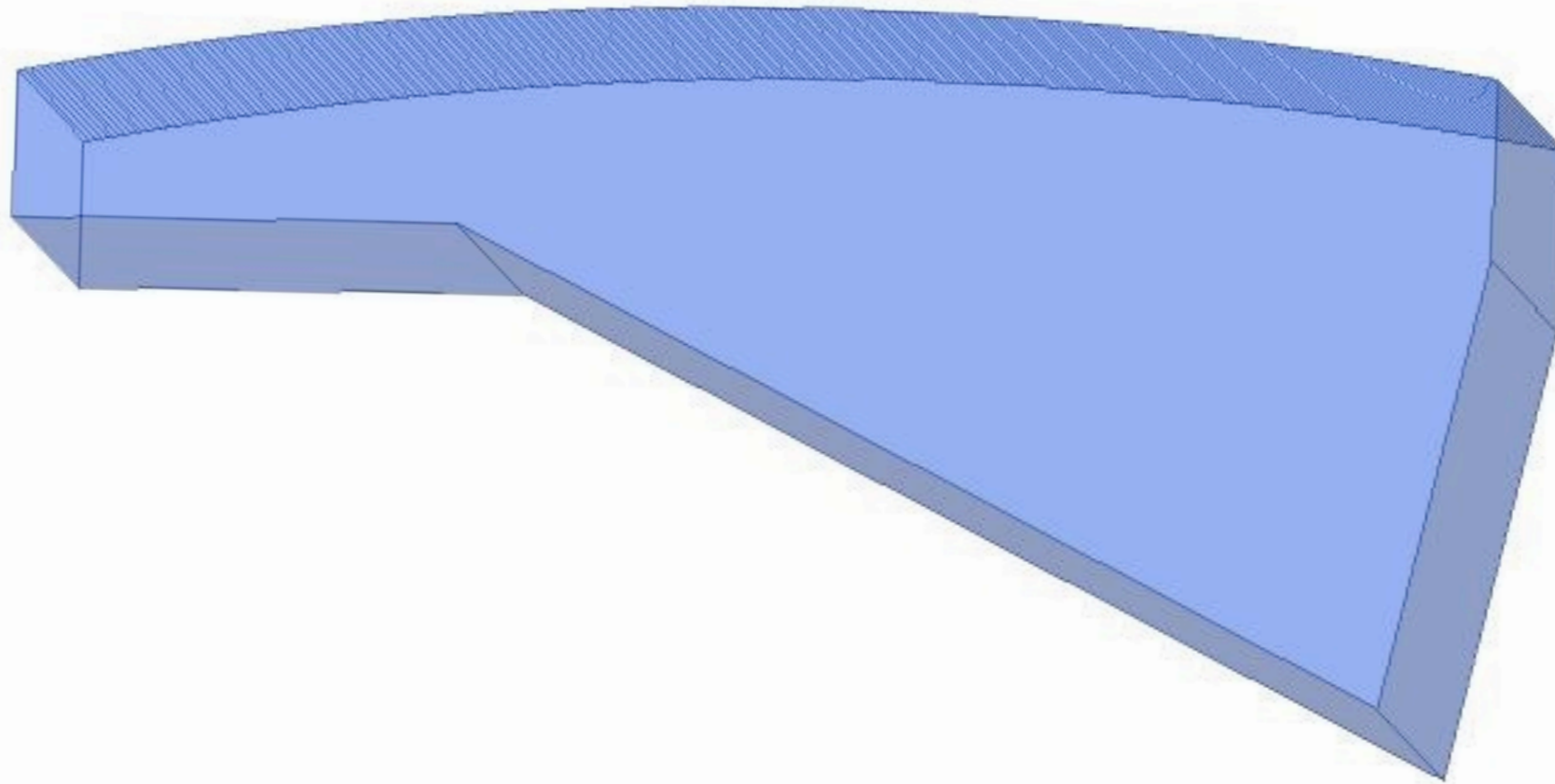


1: prism **2:** fused silica **3:** LiF/fused silica **4:** fused silica

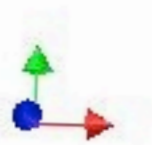
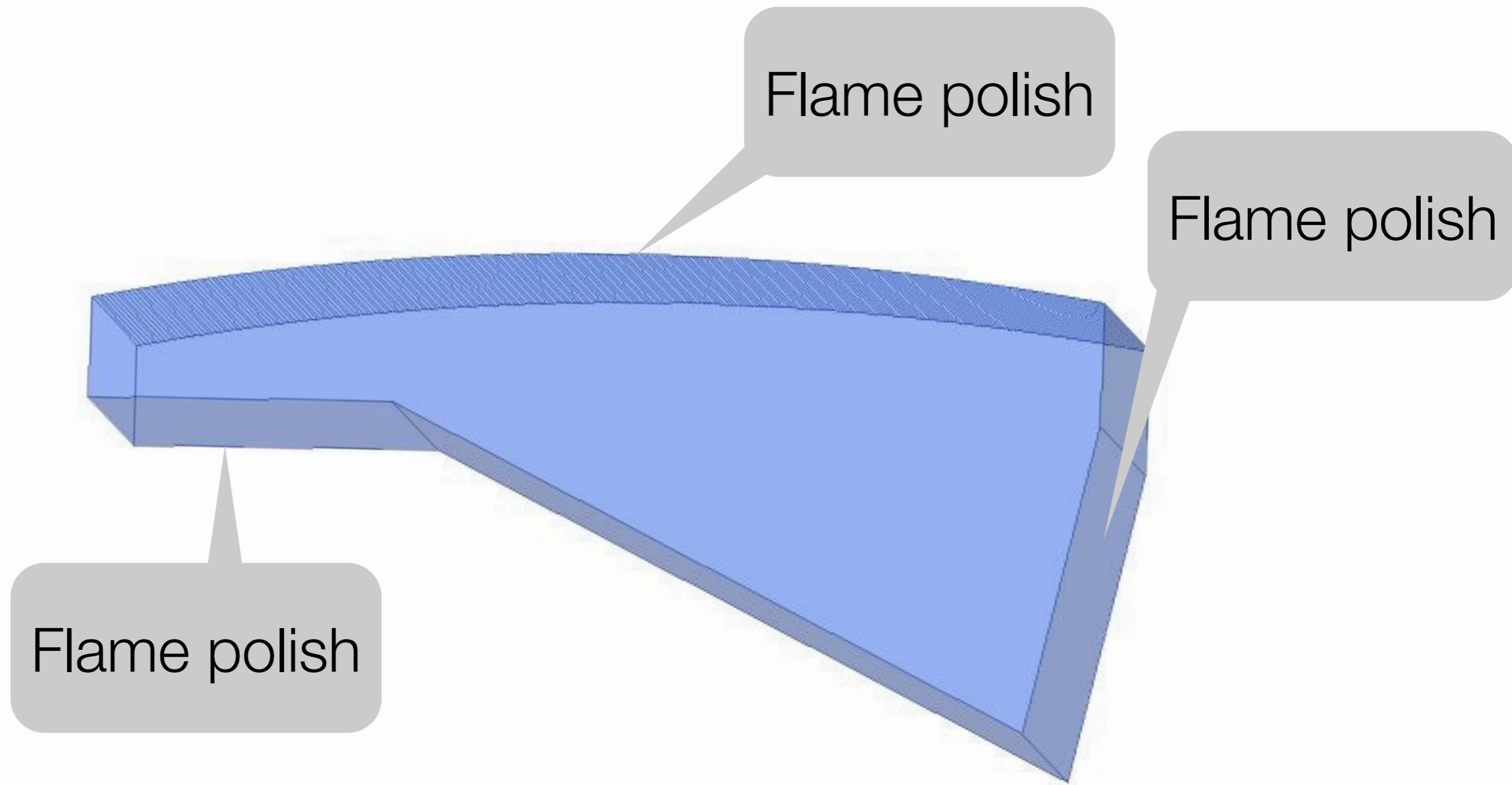
Dispersion Correction Set-up



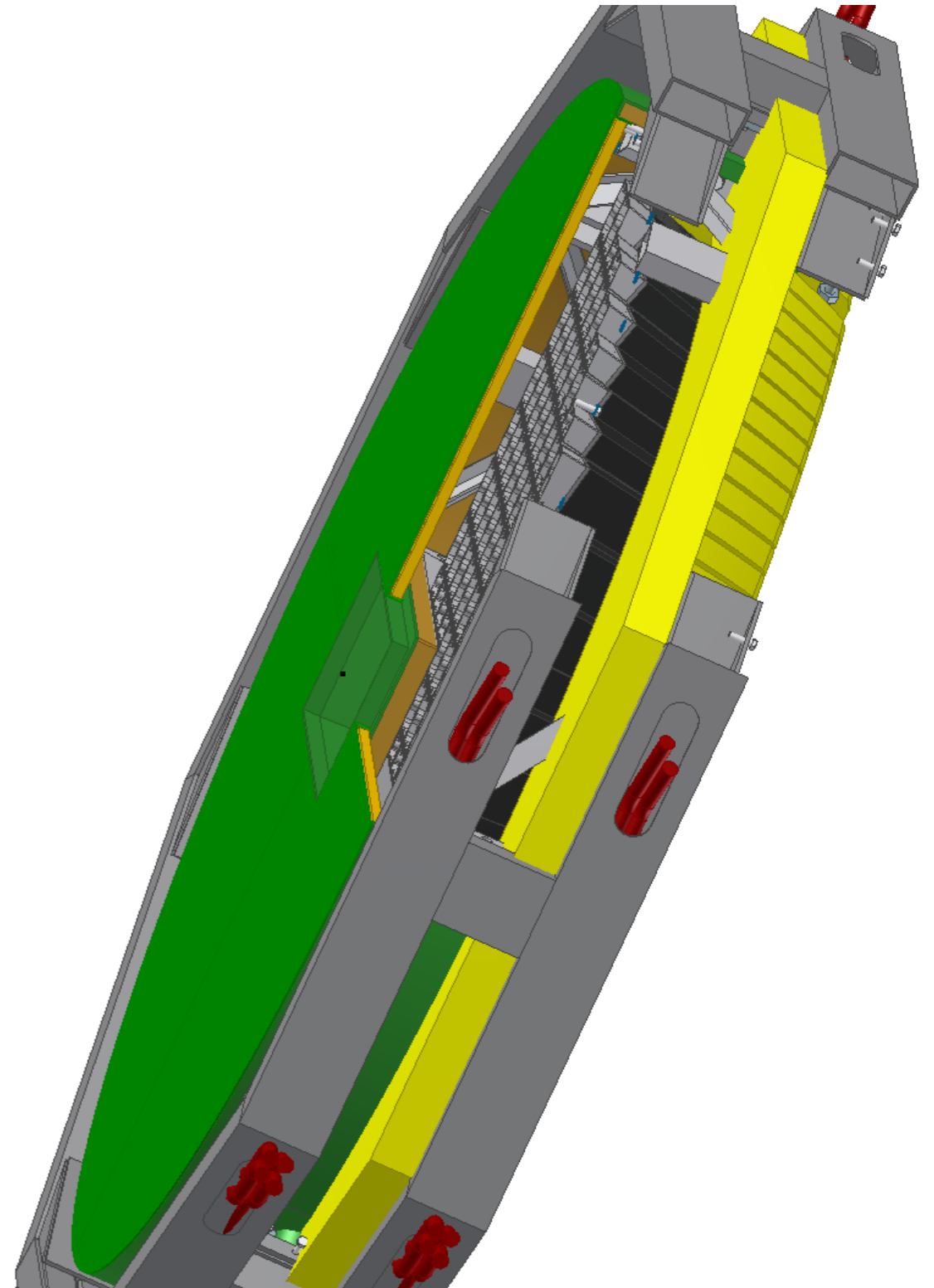
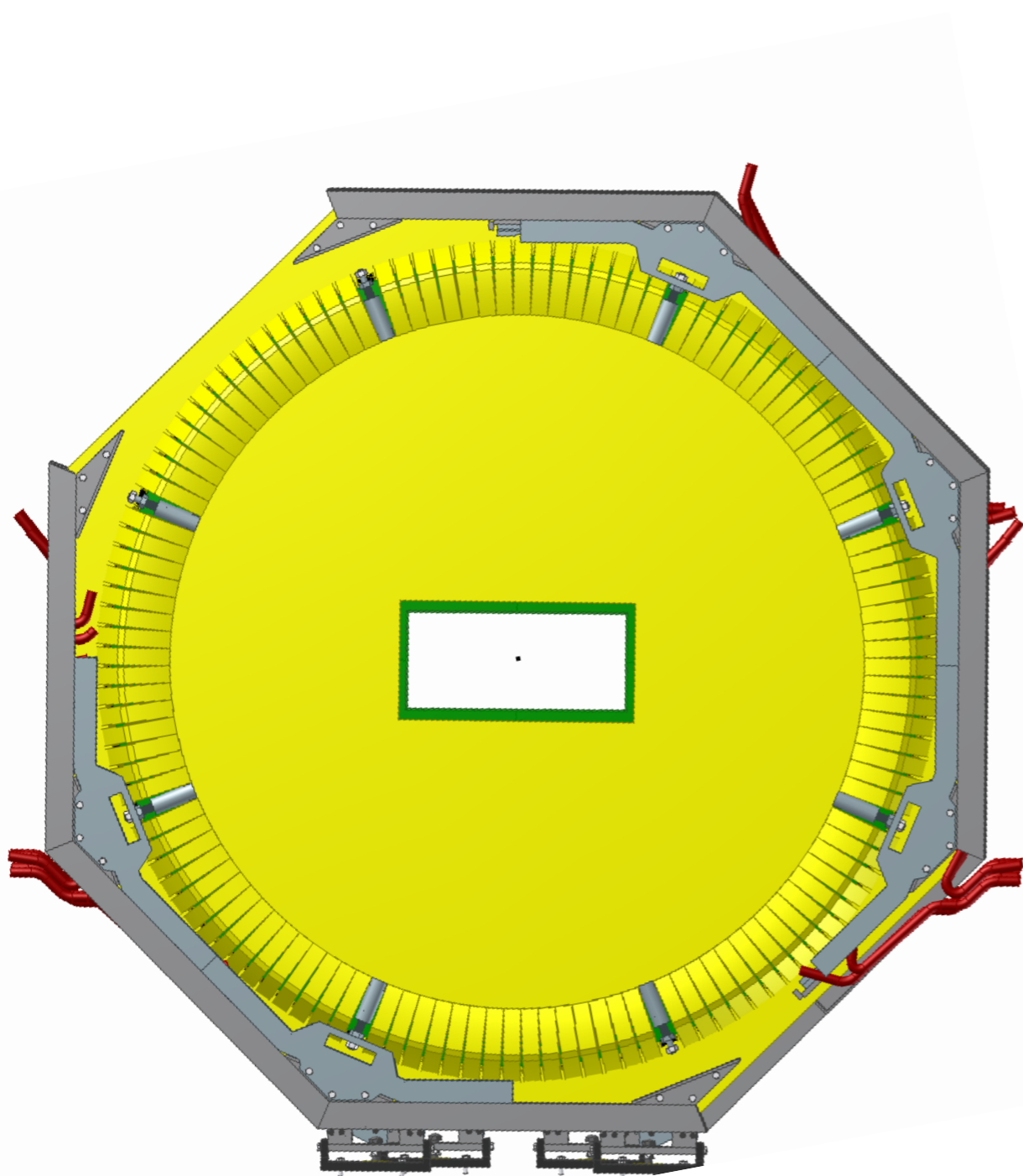
Light Guide Construction



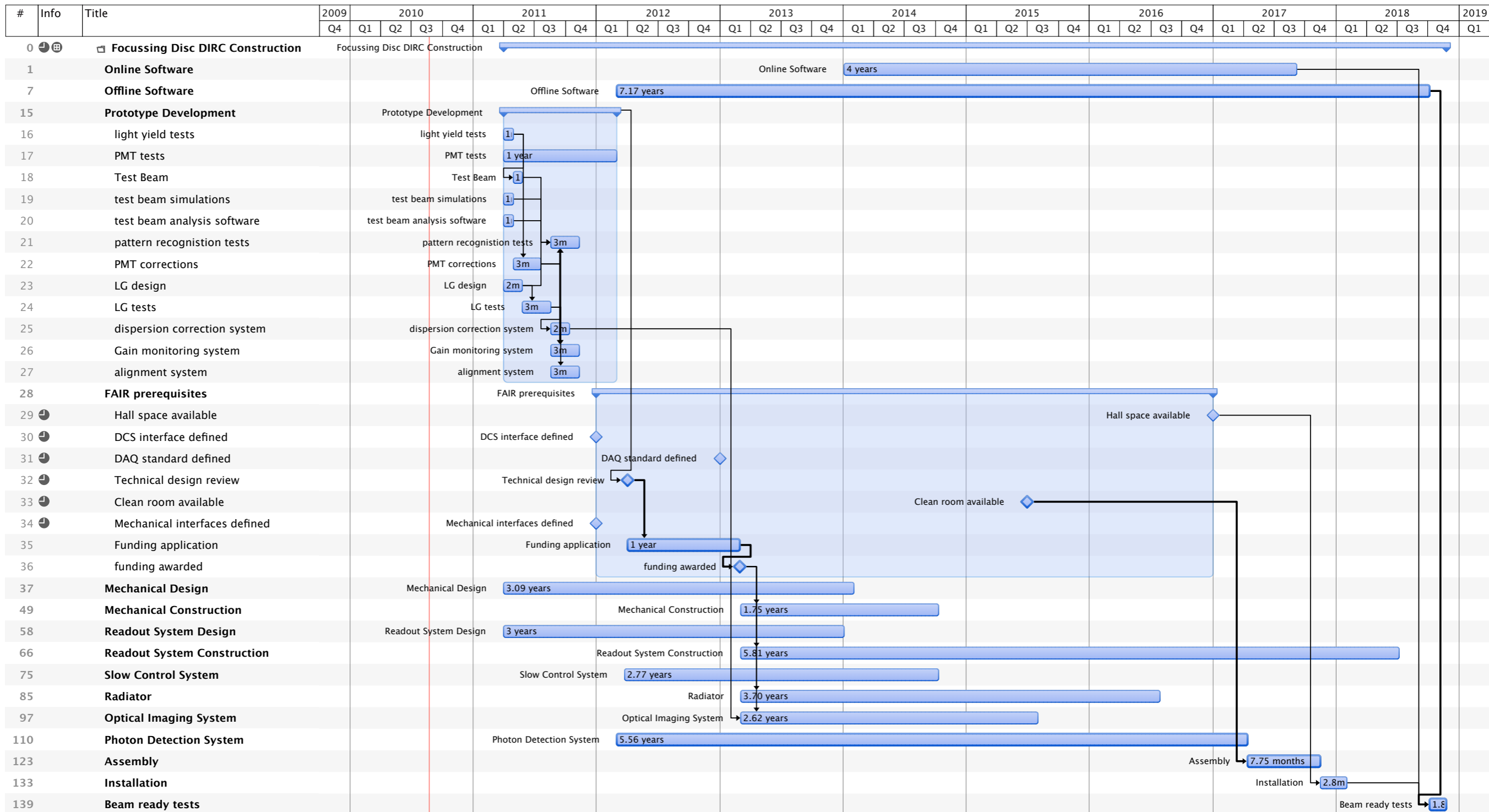
Light Guide Construction



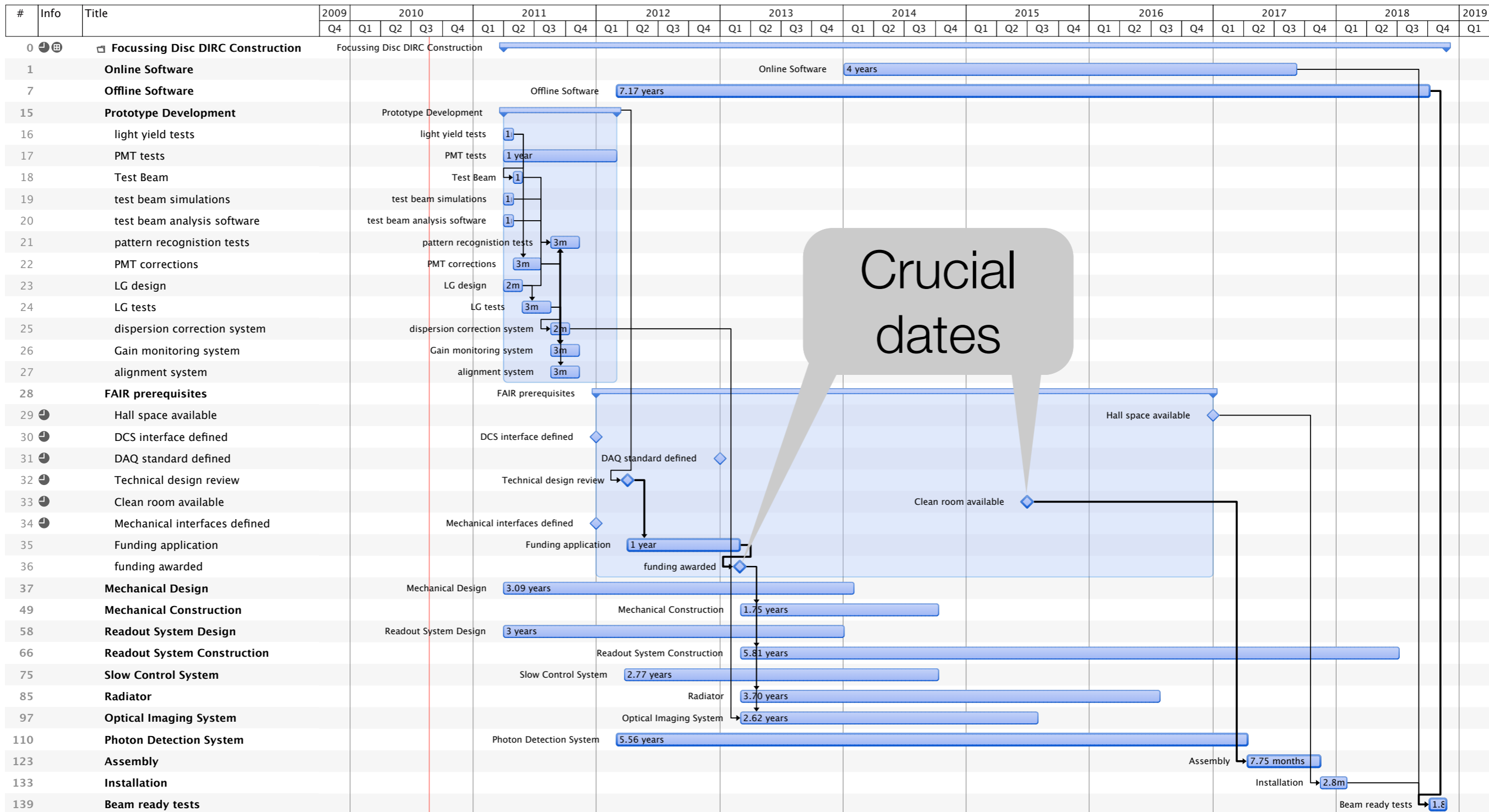
Mechanical Integration with Forward EMC



Focussing Disc DIRC Construction Timelines



Focussing Disc DIRC Construction Timelines



The road ahead ...

