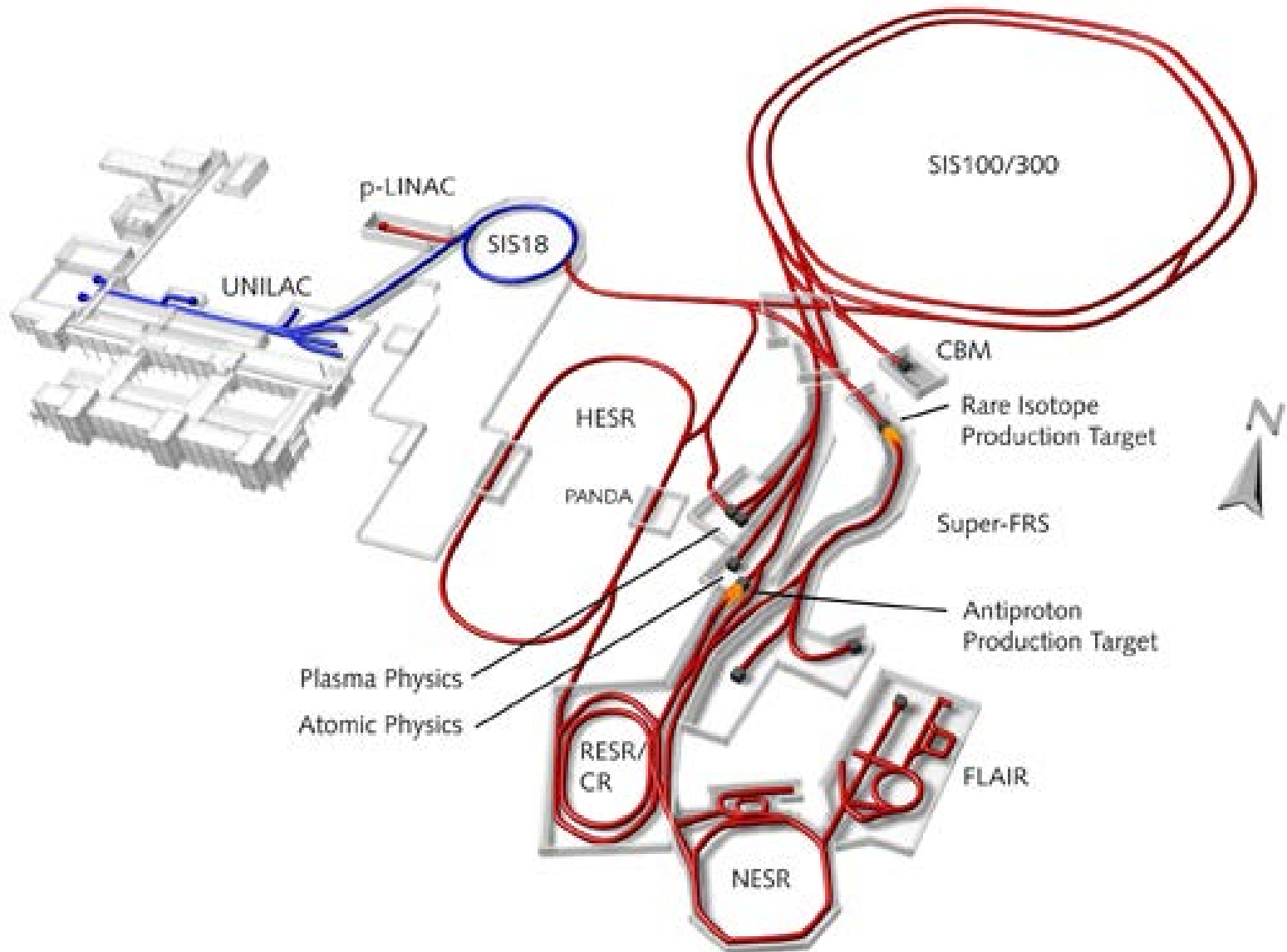


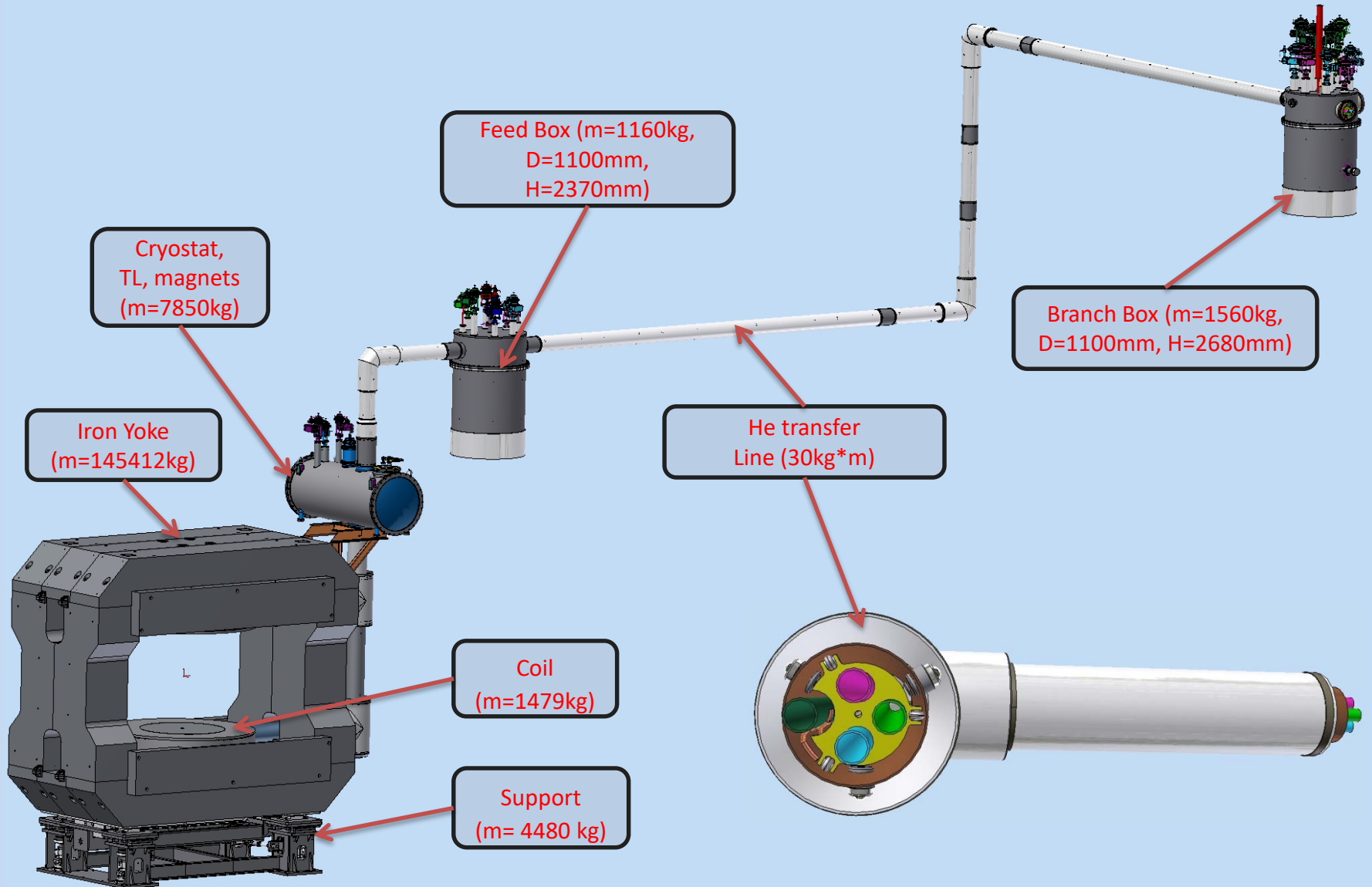
CBM Iron yoke and support design

11 2019, BINP, M.Kholopov, A.Bragin, S. Pivovarov.

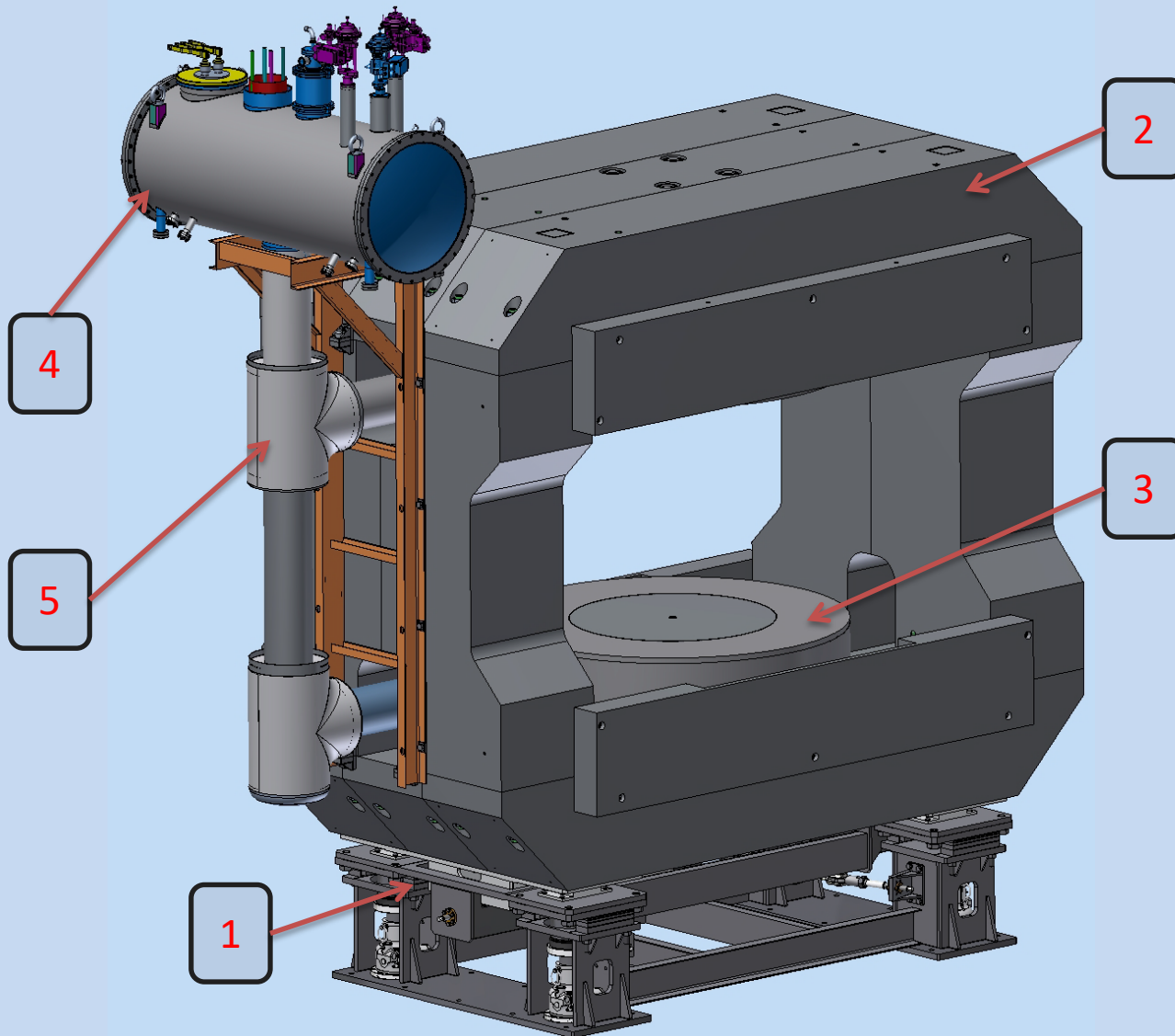
FAIR



3D Model of CBM Magnet and cryosystem



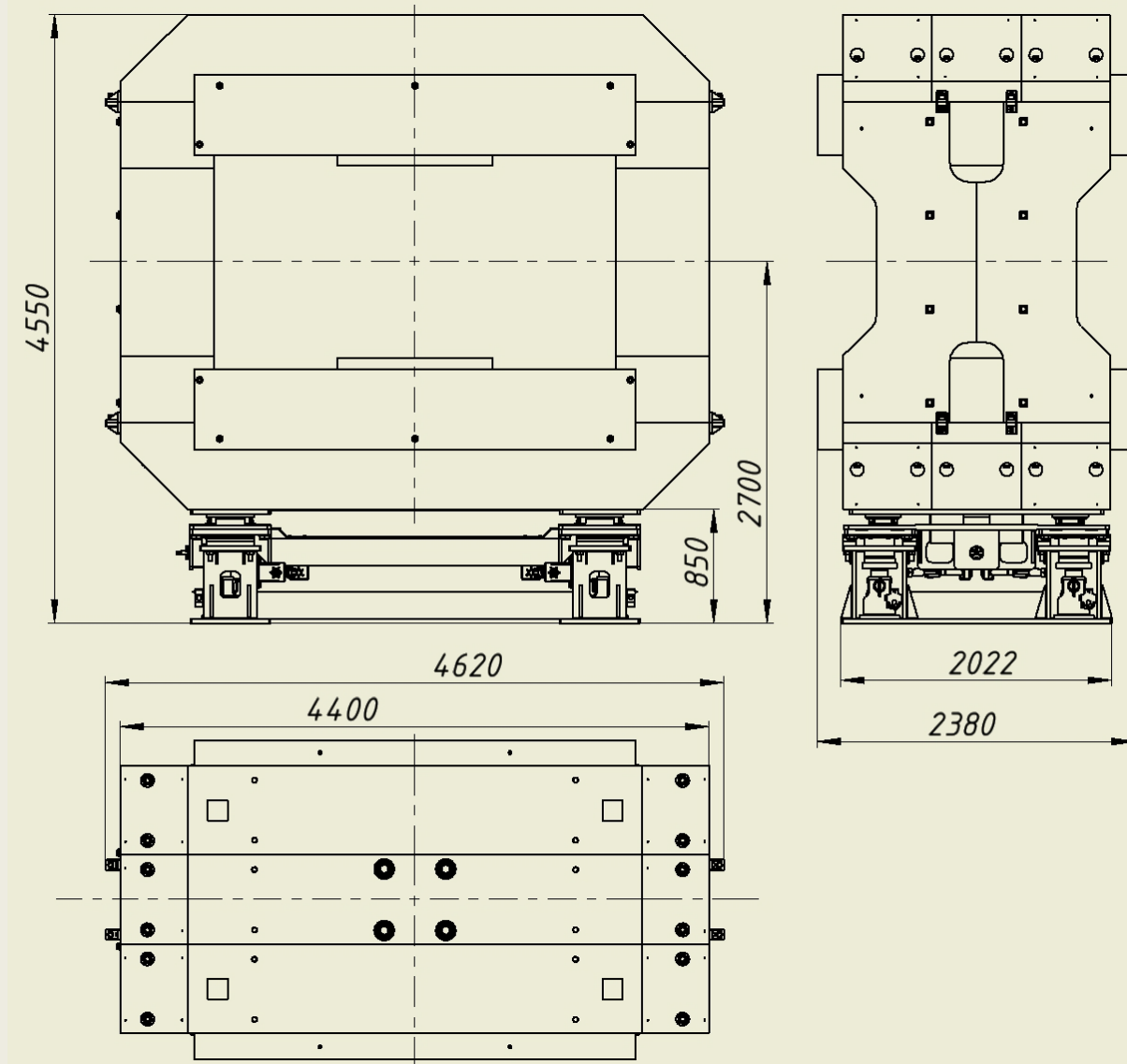
3D Model of CBM Magnet (new design)



- 1. Support $m= 4480 \text{ kg}$
- 2. Iron Yoke $m=145412\text{kg}$
- 3. Coils $m=3100\text{kg}$
- 4. Cryostat $m=940\text{kg}$
- 5. Cryostats TL $m=710\text{kg}$

The support's load – 154 tons

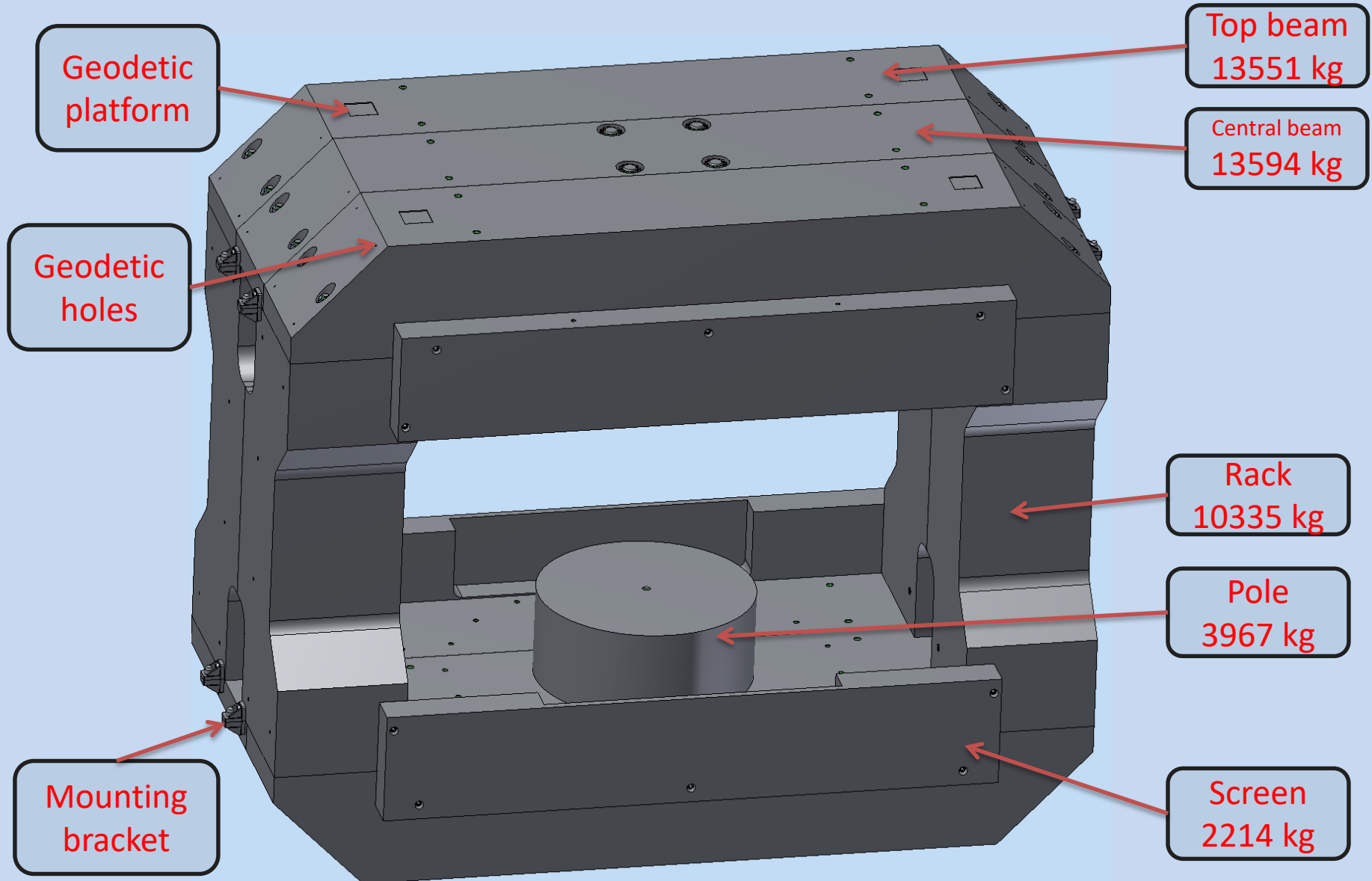
Iron Yoke and supports drawing



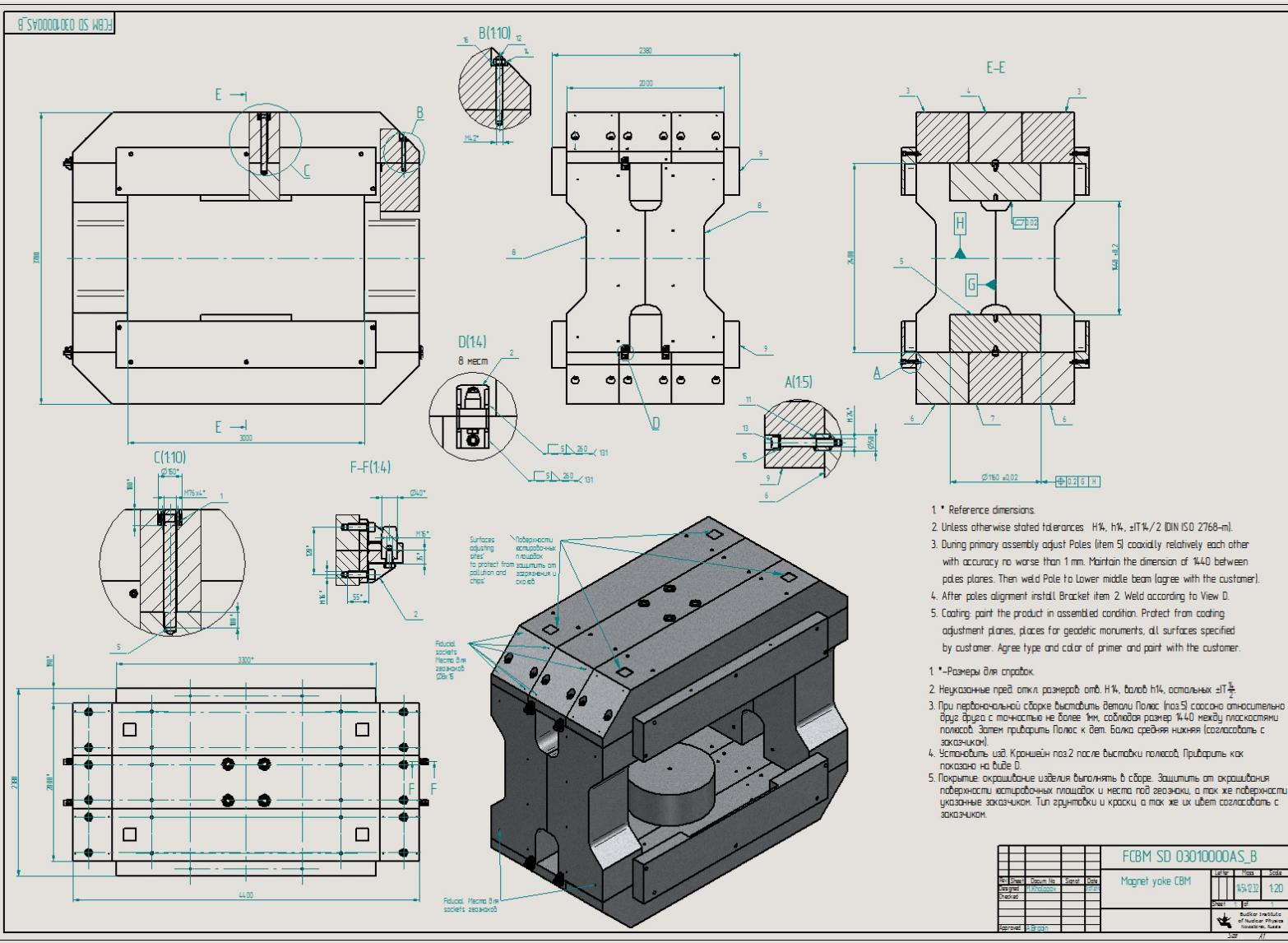
Weight and size

- $m = 150000$ kg
- $L = 4620$ mm
- $W = 2380$ mm
- $H = 4550$ mm

Iron Yoke 3D Model



Iron Yoke and supports drawing

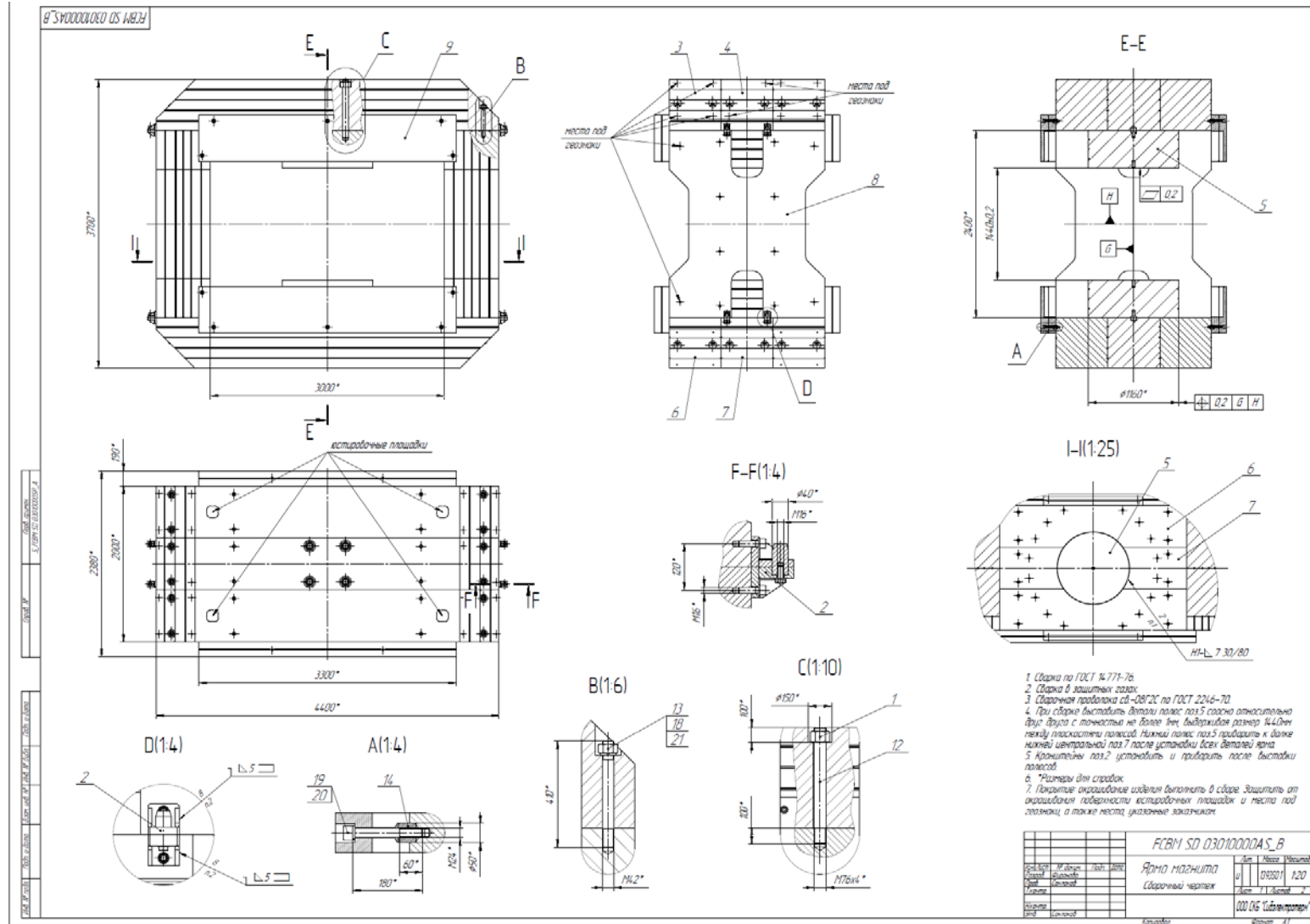


Weight and size

- m= 145412 kg
- L=4440mm
- W=2380mm
- H=3700mm

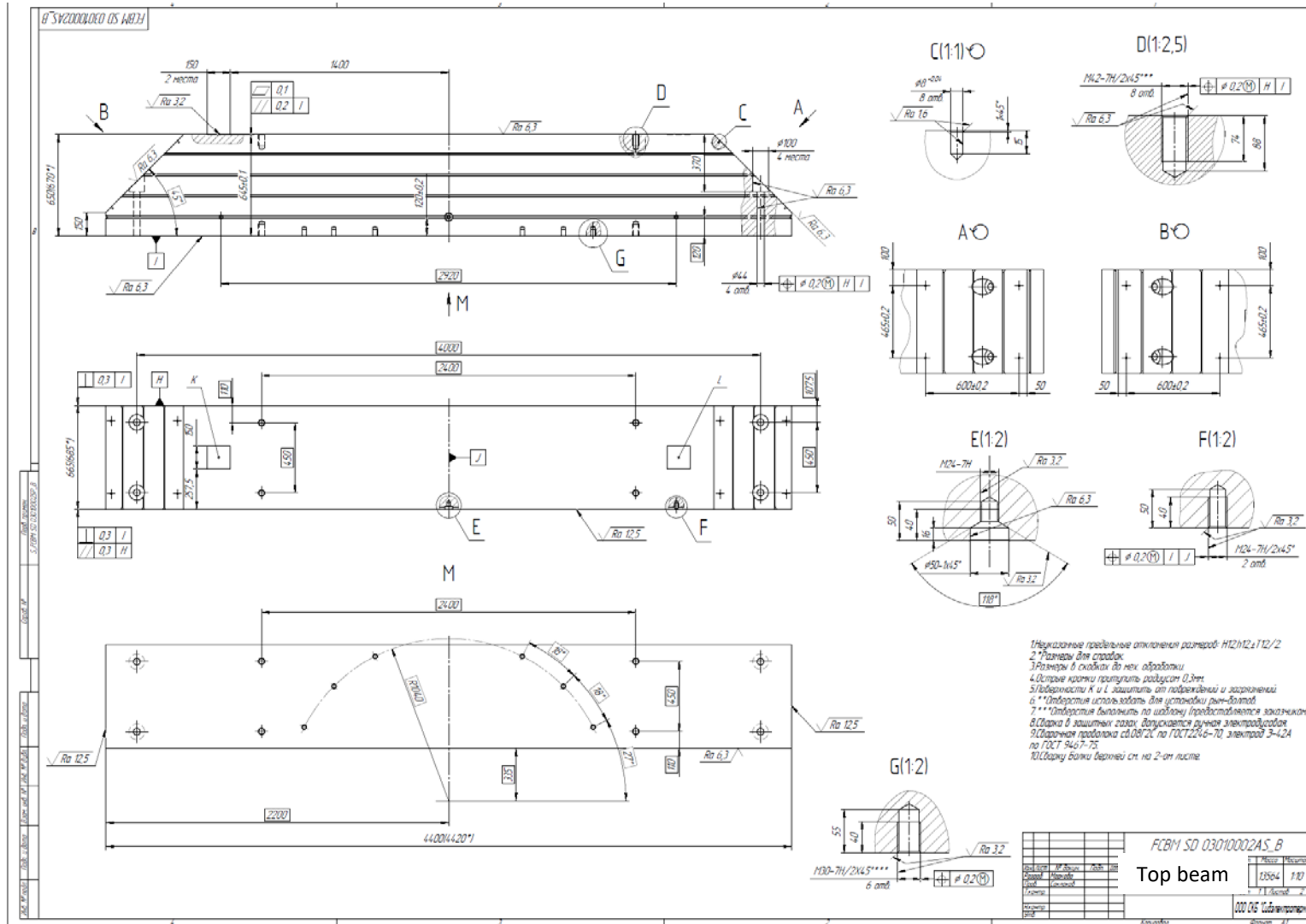
FCBM SD 03010000AS_B				
№	Элемент	Ссылка №	Ссылка	Ссылка
1	Матрица	03010000AS_B	03010000AS_B	03010000AS_B
2	Матрица	03010000AS_B	03010000AS_B	03010000AS_B
3	Матрица	03010000AS_B	03010000AS_B	03010000AS_B
4	Матрица	03010000AS_B	03010000AS_B	03010000AS_B
5	Матрица	03010000AS_B	03010000AS_B	03010000AS_B
6	Матрица	03010000AS_B	03010000AS_B	03010000AS_B
7	Матрица	03010000AS_B	03010000AS_B	03010000AS_B
8	Матрица	03010000AS_B	03010000AS_B	03010000AS_B
9	Матрица	03010000AS_B	03010000AS_B	03010000AS_B
10	Матрица	03010000AS_B	03010000AS_B	03010000AS_B
11	Матрица	03010000AS_B	03010000AS_B	03010000AS_B
12	Матрица	03010000AS_B	03010000AS_B	03010000AS_B
13	Матрица	03010000AS_B	03010000AS_B	03010000AS_B
14	Матрица	03010000AS_B	03010000AS_B	03010000AS_B
15	Матрица	03010000AS_B	03010000AS_B	03010000AS_B
16	Матрица	03010000AS_B	03010000AS_B	03010000AS_B
17	Матрица	03010000AS_B	03010000AS_B	03010000AS_B
18	Матрица	03010000AS_B	03010000AS_B	03010000AS_B
19	Матрица	03010000AS_B	03010000AS_B	03010000AS_B
20	Матрица	03010000AS_B	03010000AS_B	03010000AS_B
21	Матрица	03010000AS_B	03010000AS_B	03010000AS_B
22	Матрица	03010000AS_B	03010000AS_B	03010000AS_B
23	Матрица	03010000AS_B	03010000AS_B	03010000AS_B
24	Матрица	03010000AS_B	03010000AS_B	03010000AS_B
25	Матрица	03010000AS_B	03010000AS_B	03010000AS_B
26	Матрица	03010000AS_B	03010000AS_B	03010000AS_B
27	Матрица	03010000AS_B	03010000AS_B	03010000AS_B
28	Матрица	03010000AS_B	03010000AS_B	03010000AS_B
29	Матрица	03010000AS_B	03010000AS_B	03010000AS_B
30	Матрица	03010000AS_B	03010000AS_B	03010000AS_B
31	Матрица	03010000AS_B	03010000AS_B	03010000AS_B
32	Матрица	03010000AS_B	03010000AS_B	03010000AS_B
33	Матрица	03010000AS_B	03010000AS_B	03010000AS_B
34	Матрица	03010000AS_B	03010000AS_B	03010000AS_B
35	Матрица	03010000AS_B	03010000AS_B	03010000AS_B
36	Матрица	03010000AS_B	03010000AS_B	03010000AS_B
37	Матрица	03010000AS_B	03010000AS_B	03010000AS_B
38	Матрица	03010000AS_B	03010000AS_B	03010000AS_B
39	Матрица	03010000AS_B	03010000AS_B	03010000AS_B
40	Матрица	03010000AS_B	03010000AS_B	03010000AS_B
41	Матрица	03010000AS_B	03010000AS_B	03010000AS_B
42	Матрица	03010000AS_B	03010000AS_B	03010000AS_B
43	Матрица	03010000AS_B	03010000AS_B	03010000AS_B
44	Матрица	03010000AS_B	03010000AS_B	03010000AS_B
45	Матрица	03010000AS_B	03010000AS_B	03010000AS_B
46	Матрица	03010000AS_B	03010000AS_B	03010000AS_B
47	Матрица	03010000AS_B	03010000AS_B	03010000AS_B
48	Матрица	03010000AS_B	03010000AS_B	03010000AS_B
49	Матрица	03010000AS_B	03010000AS_B	03010000AS_B
50	Матрица	03010000AS_B	03010000AS_B	03010000AS_B
51	Матрица	03010000AS_B	03010000AS_B	03010000AS_B
52	Матрица	03010000AS_B	03010000AS_B	03010000AS_B
53	Матрица	03010000AS_B	03010000AS_B	03010000AS_B
54	Матрица	03010000AS_B	03010000AS_B	03010000AS_B
55	Матрица	03010000AS_B	03010000AS_B	03010000AS_B
56	Матрица	03010000AS_B	03010000AS_B	03010000AS_B
57	Матрица	03010000AS_B	03010000AS_B	03010000AS_B
58	Матрица	03010000AS_B	03010000AS_B	03010000AS_B
59	Матрица	03010000AS_B	03010000AS_B	03010000AS_B
60	Матрица	03010000AS_B	03010000AS_B	03010000AS_B
61	Матрица	03010000AS_B	03010000AS_B	03010000AS_B
62	Матрица	03010000AS_B	03010000AS_B	03010000AS_B
63	Матрица	03010000AS_B	03010000AS_B	03010000AS_B
64	Матрица	03010000AS_B	03010000AS_B	03010000AS_B
65	Матрица	03010000AS_B	03010000AS_B	03010000AS_B
66	Матрица	03010000AS_B	03010000AS_B	03010000AS_B
67	Матрица	03010000AS_B	03010000AS_B	03010000AS_B
68	Матрица	03010000AS_B	03010000AS_B	03010000AS_B
69	Матрица	03010000AS_B	03010000AS_B	03010000AS_B
70	Матрица	03010000AS_B	03010000AS_B	03010000AS_B
71	Матрица	03010000AS_B	03010000AS_B	03010000AS_B
72	Матрица	03010000AS_B	03010000AS_B	03010000AS_B
73	Матрица	03010000AS_B	03010000AS_B	03010000AS_B
74	Матрица	03010000AS_B	03010000AS_B	03010000AS_B
75	Матрица	03010000AS_B	03010000AS_B	03010000AS_B
76	Матрица	03010000AS_B	03010000AS_B	03010000AS_B
77	Матрица	03010000AS_B	03010000AS_B	03010000AS_B
78	Матрица	03010000AS_B	03010000AS_B	03010000AS_B
79	Матрица	03010000AS_B	03010000AS_B	03010000AS_B
80	Матрица	03010000AS_B	03010000AS_B	03010000AS_B
81	Матрица	03010000AS_B	03010000AS_B	03010000AS_B
82	Матрица	03010000AS_B	03010000AS_B	03010000AS_B
83	Матрица	03010000AS_B	03010000AS_B	03010000AS_B
84	Матрица	03010000AS_B	03010000AS_B	03010000AS_B
85	Матрица	03010000AS_B	03010000AS_B	03010000AS_B
86	Матрица	03010000AS_B	03010000AS_B	03010000AS_B
87	Матрица	03010000AS_B	03010000AS_B	03010000AS_B
88	Матрица	03010000AS_B	03010000AS_B	03010000AS_B
89	Матрица	03010000AS_B	03010000AS_B	03010000AS_B
90	Матрица	03010000AS_B	03010000AS_B	03010000AS_B
91	Матрица	03010000AS_B	03010000AS_B	03010000AS_B
92	Матрица	03010000AS_B	03010000AS_B	03010000AS_B
93	Матрица	03010000AS_B	03010000AS_B	03010000AS_B
94	Матрица	03010000AS_B	03010000AS_B	03010000AS_B
95	Матрица	03010000AS_B	03010000AS_B	03010000AS_B
96	Матрица	03010000AS_B	03010000AS_B	03010000AS_B
97	Матрица	03010000AS_B	03010000AS_B	03010000AS_B
98	Матрица	03010000AS_B	03010000AS_B	03010000AS_B
99	Матрица	03010000AS_B	03010000AS_B	03010000AS_B
100	Матрица	03010000AS_B	03010000AS_B	03010000AS_B

Iron Yoke production drawing



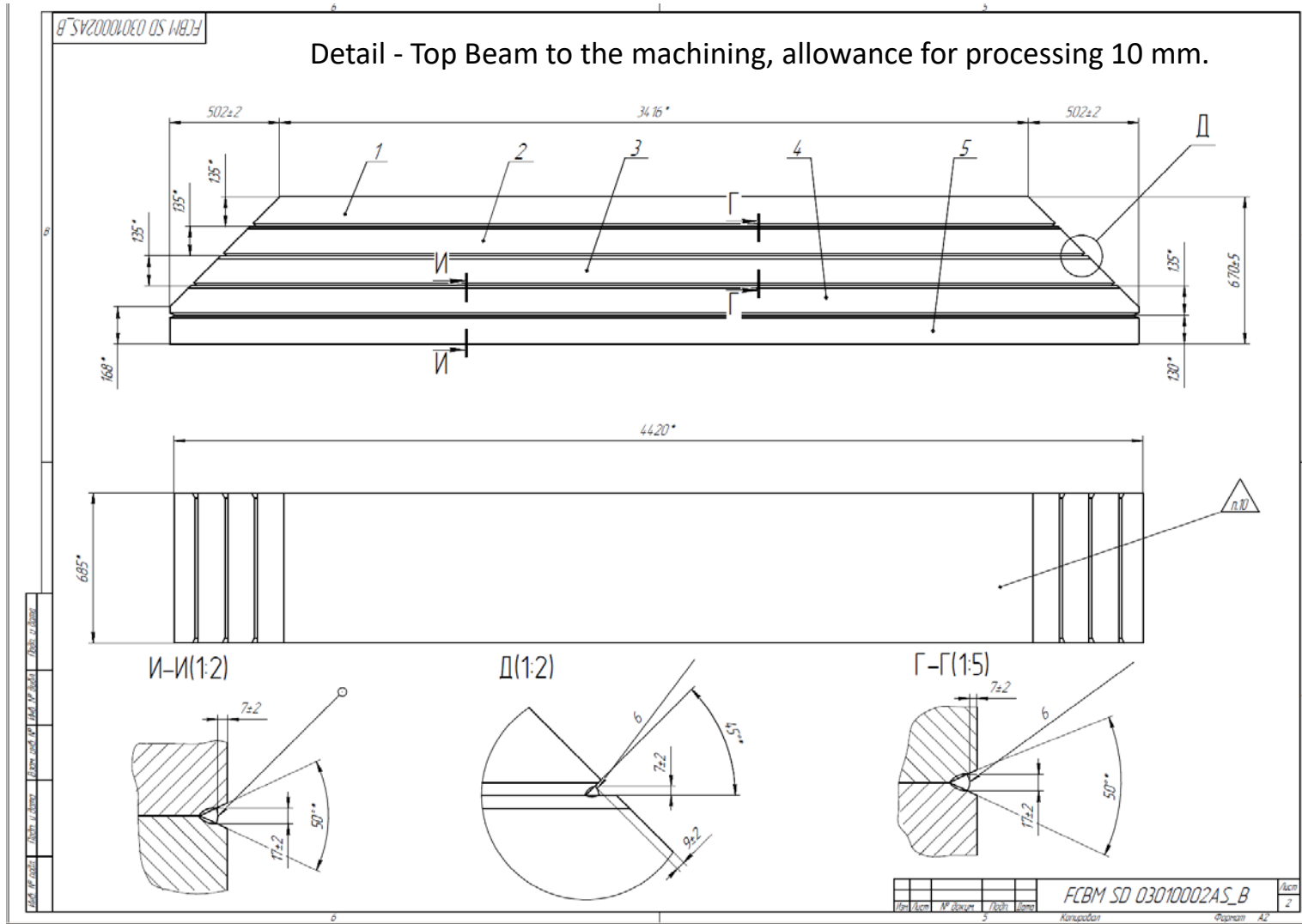
Drawings are processed in technologists and prepared for translation.

Iron Yoke production drawing



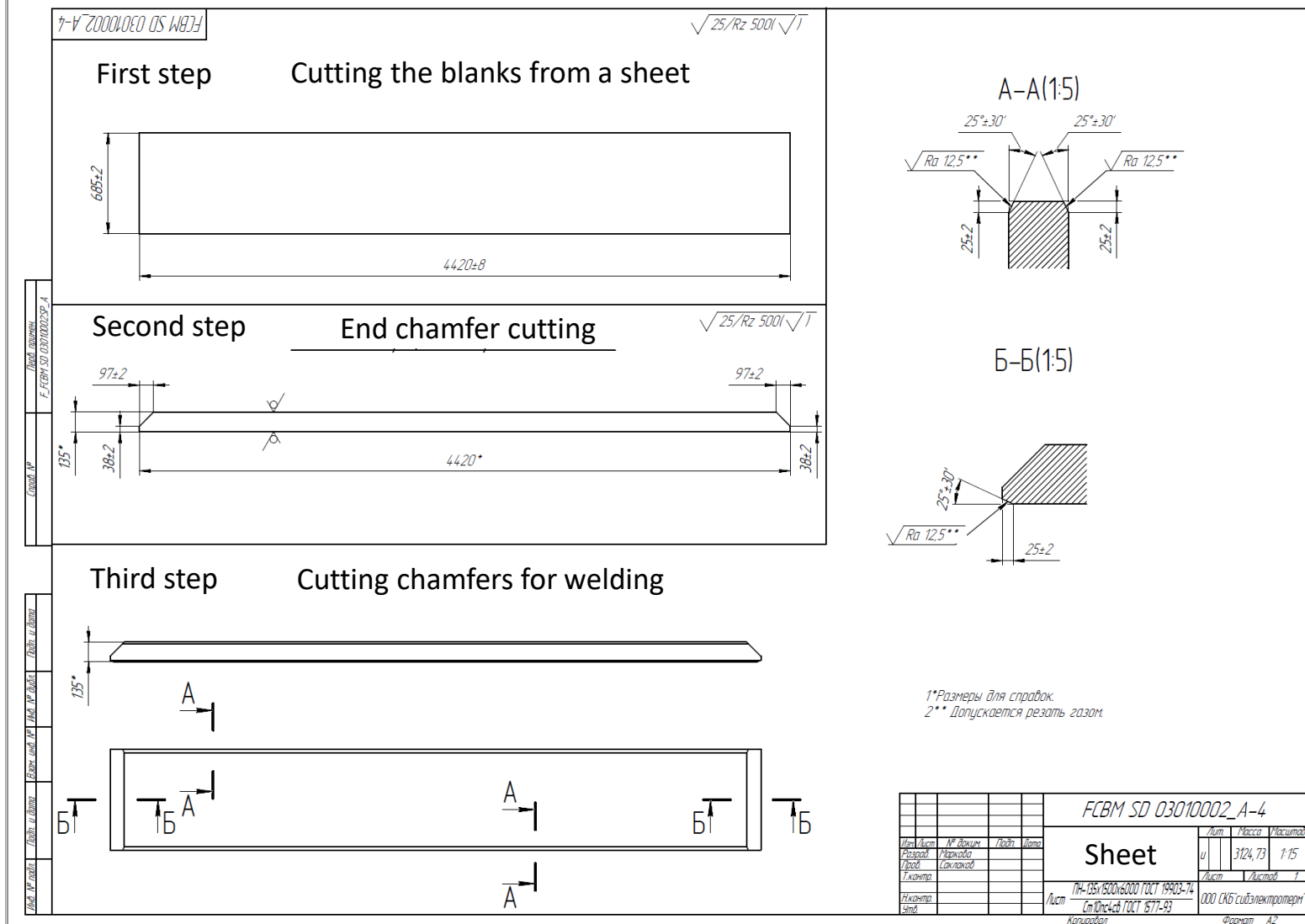
An example of the implementation of the yoke of sheet material.

Iron Yoke production drawing



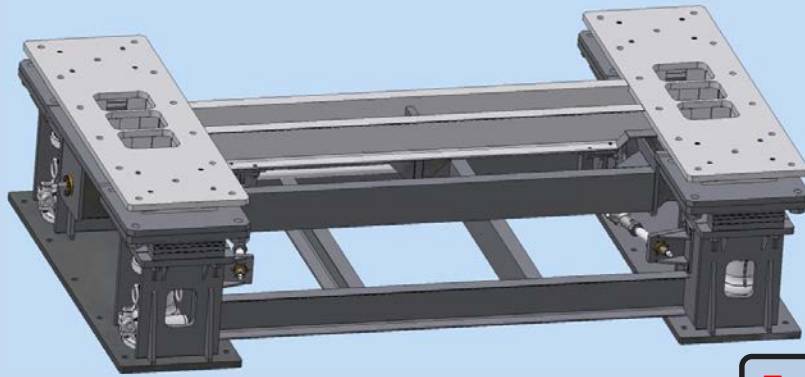
An example of the implementation of the yoke of sheet material.

Iron Yoke production drawing



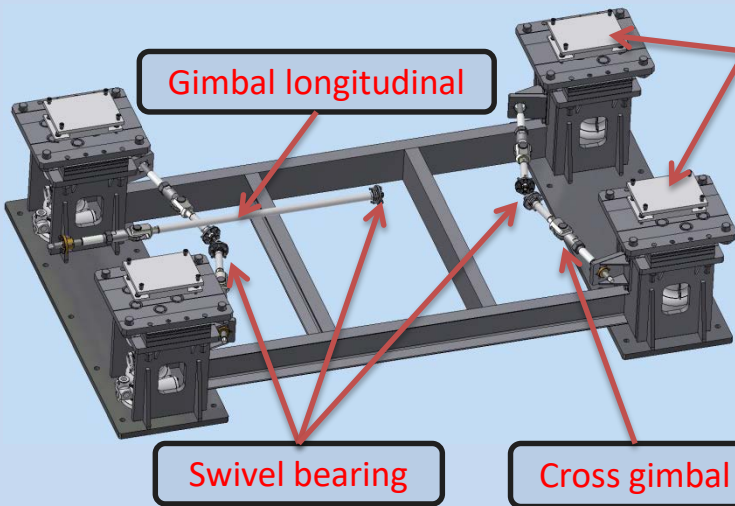
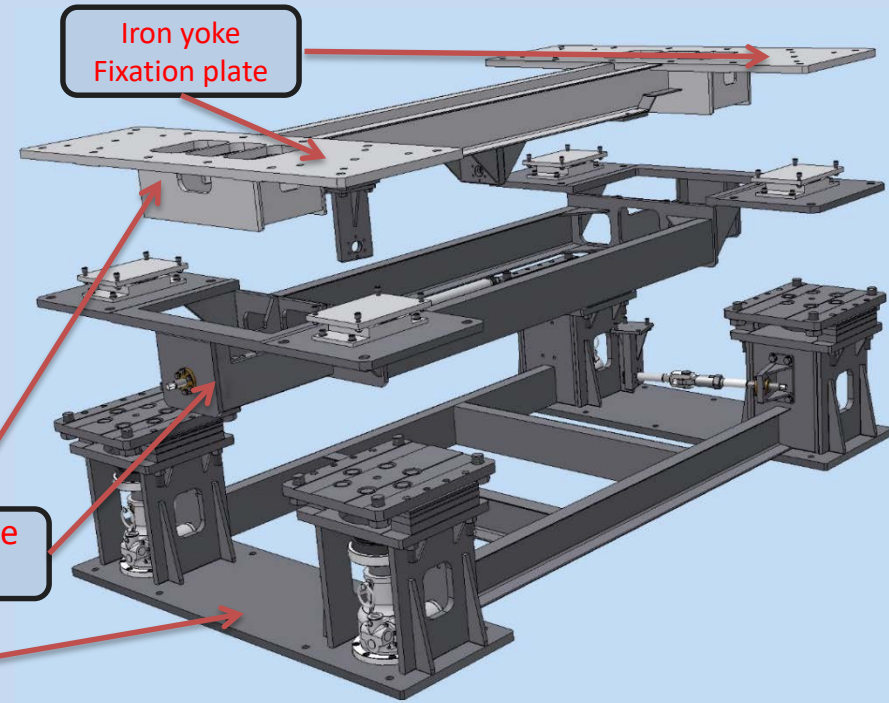
An example of the implementation of the yoke of sheet material.

CBM Magnet support

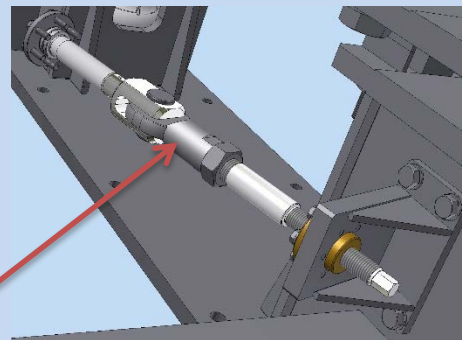


Magnet supports alignment tools

- Position accuracy: ± 0.5 mm (meeting in December 2018)
- Orientation accuracy (roll): ± 0.5 mrad
- Also, this design allows rotation around vertical axis $\pm 0.5^\circ$
- The gimbals has a fixation and alignment tool



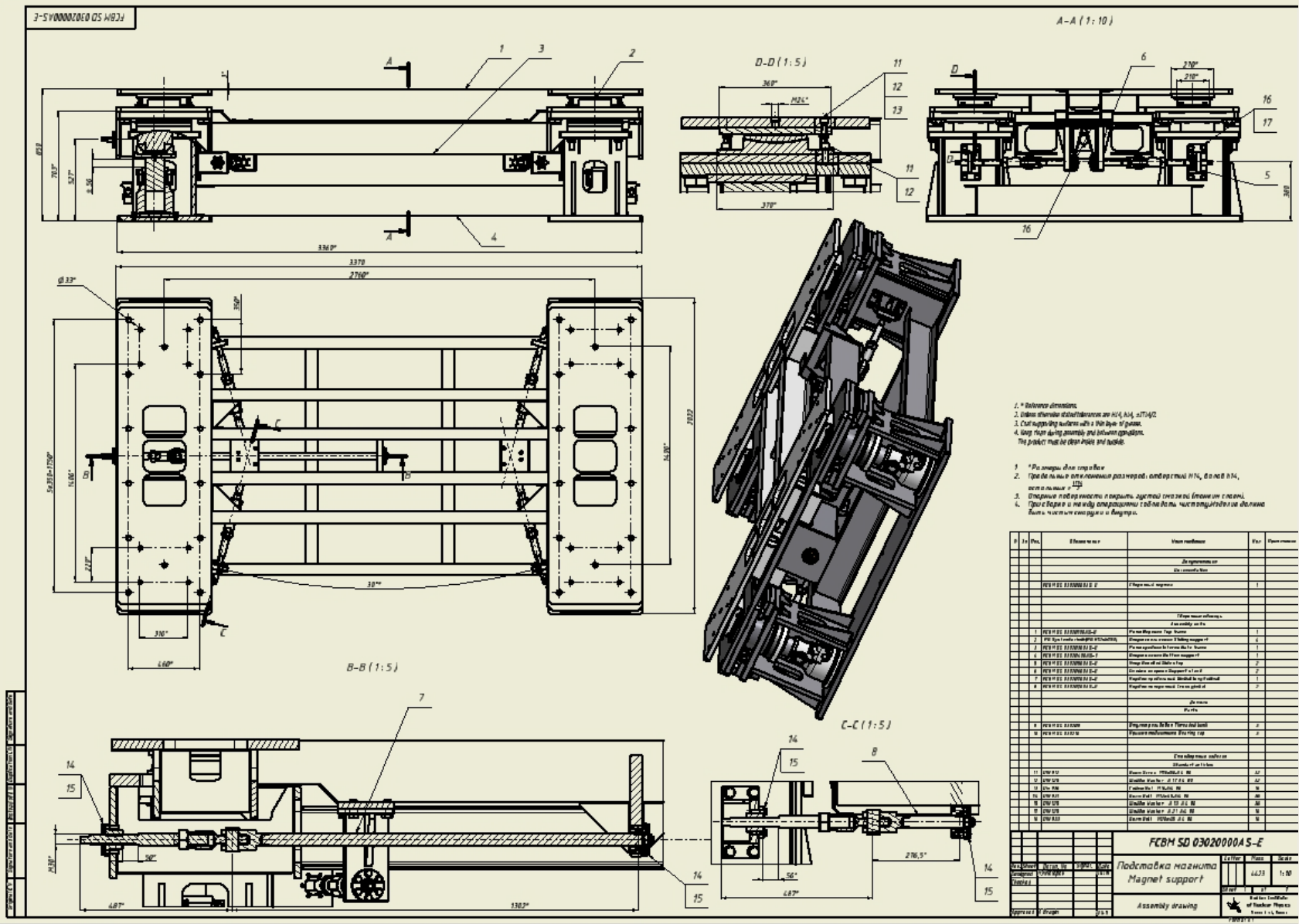
Sliding support



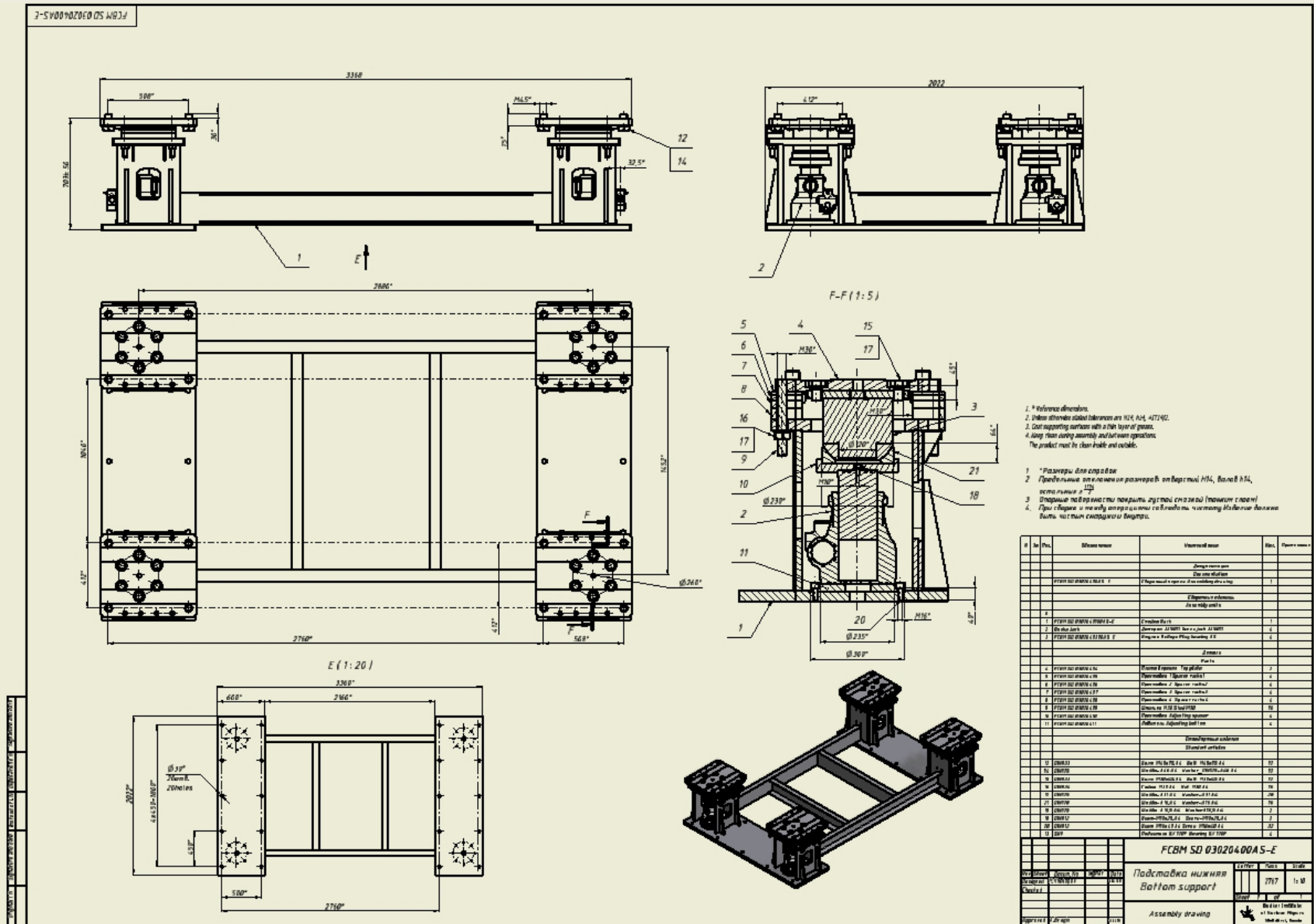
Weight and size

- m= 4480 kg
- 2022x3470x850mm
- move in 3D ± 40 mm
- Rotation top frame $\pm 4^\circ$
- Loading capacity 200000 kg
- strength class of fasteners - 8.8

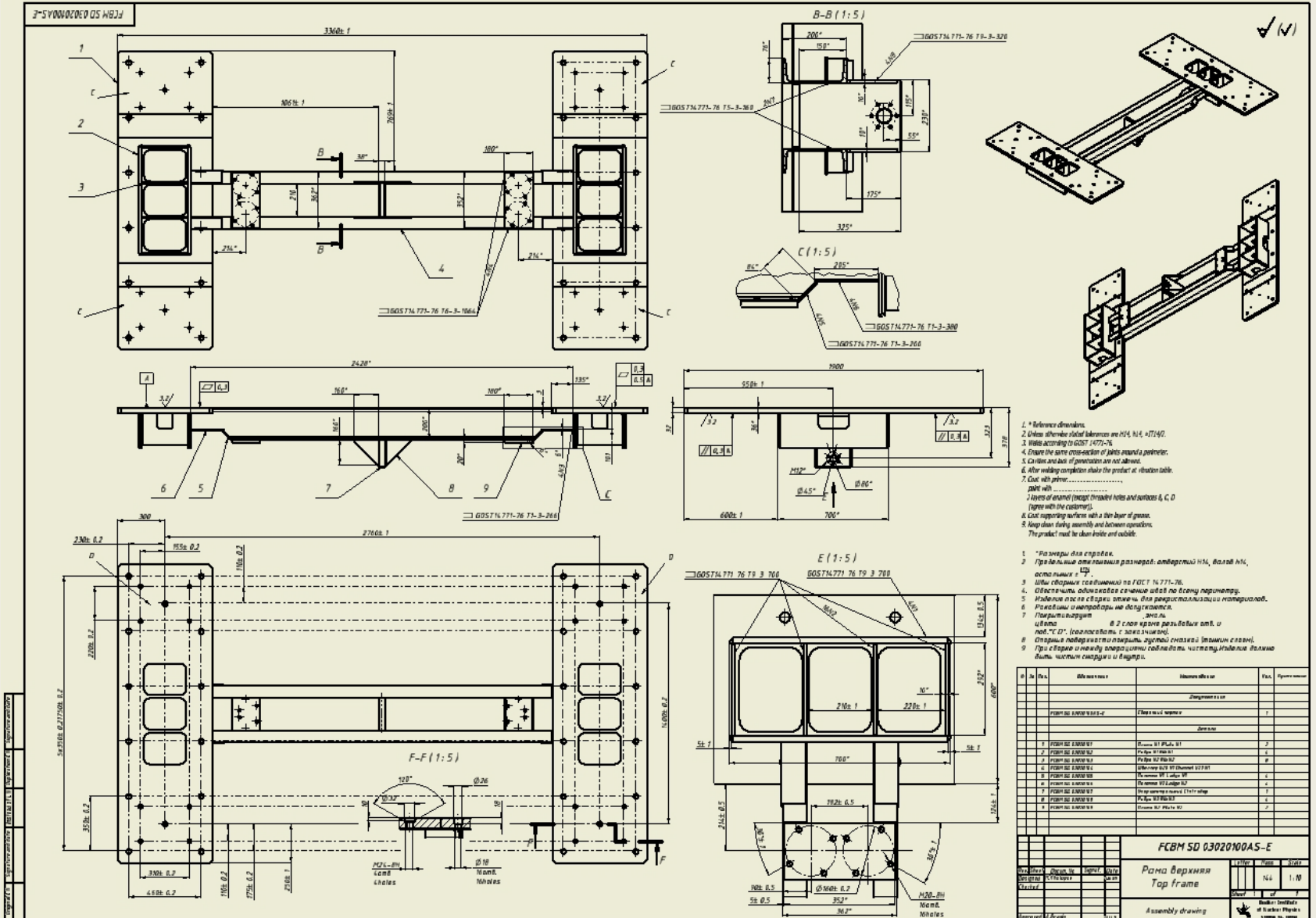
Magnet supports drawing



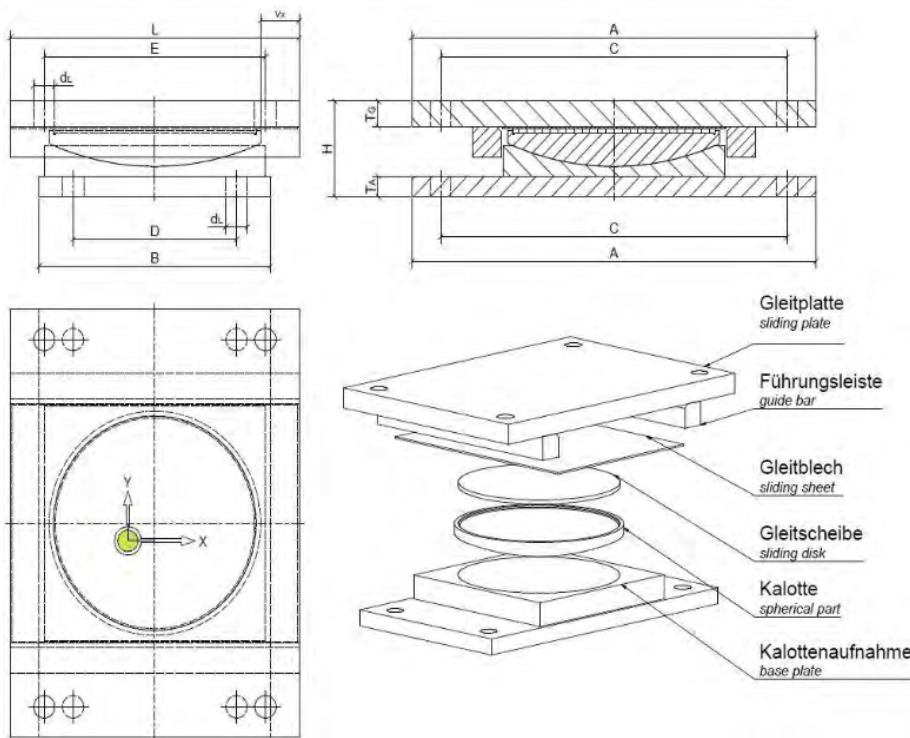
Bottom supports drawing



Top frame drawing



PGslide® Kalotten- Gleitlager mit 1 PTFE- Gleitelement, geführt PGslide® spherical slide bearing with 1 PTFE pad, guided



Typ / type	Lasten / loads		Abmessungen / dimensions													
	max. NS, s [kN]	V _{y, sd}	A	B	C	D	T _A	T _G	H	d _L	L ± 20	L ± 40	L ± 80	E ± 20	E ± 40	E ± 80
K 11sb	100	20	200	100	160	60	10	10	55	14	120	160	240	80	120	200
K 11sb	250	50	250	140	210	100	10	15	65	14	160	200	280	120	160	240
K 11sb	500	100	330	180	280	120	15	20	77	18	200	240	320	150	190	270
K 11sb	750	150	370	210	320	150	15	20	85	18	230	270	350	180	220	300
K 11sb	1.000	200	420	240	360	170	20	25	95	22	260	300	380	190	230	310
K 11sb	1.500	300	520	290	440	200	20	25	100	26	310	350	430	230	270	350
K 11sb	2.000	400	620	330	520	230	30	30	117	32	350	390	470	250	290	370
K 11sb	2.500	500	670	370	570	270	30	40	133	32	390	430	510	290	330	410
K 11sb	3.000	600	700	400	600	300	30	40	133	32	420	460	540	320	360	440
K 11sb	3.500	700	760	430	660	330	30	50	150	32	450	490	570	350	390	470
K 11sb	4.000	800	810	450	690	330	35	55	158	38	470	510	590	350	390	470
K 11sb	4.500	900	870	480	750	360	35	55	165	38	500	540	620	380	420	500
K 11sb	5.000	1.000	890	500	770	380	35	55	164	38	520	560	640	400	440	520

PTFE plate can be replaced with radiation resistant material. For example bronze with lubrication.

PTFE bearings are maintenance-free, this also applies to lubricated PTFE bearings;

Very Low Friction Constant

For the sake of simplicity, the following friction constants may be assumed under optimum installation conditions:

PTFE bearing, not lubricated about max. $\mu = 0.1$

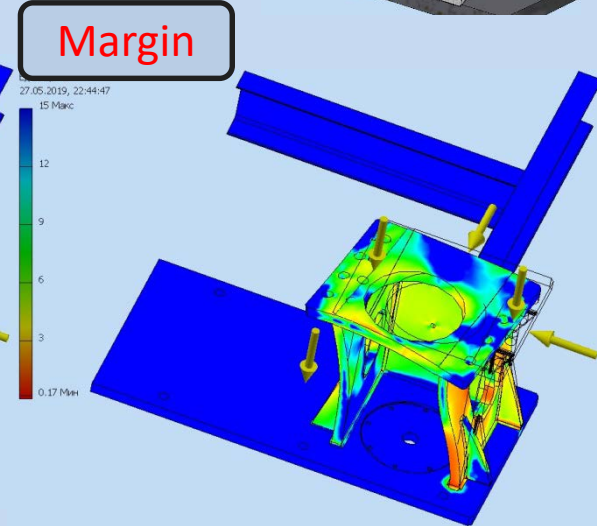
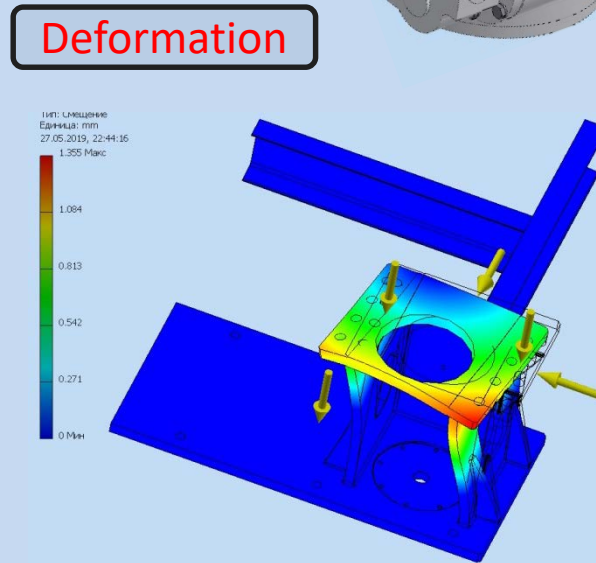
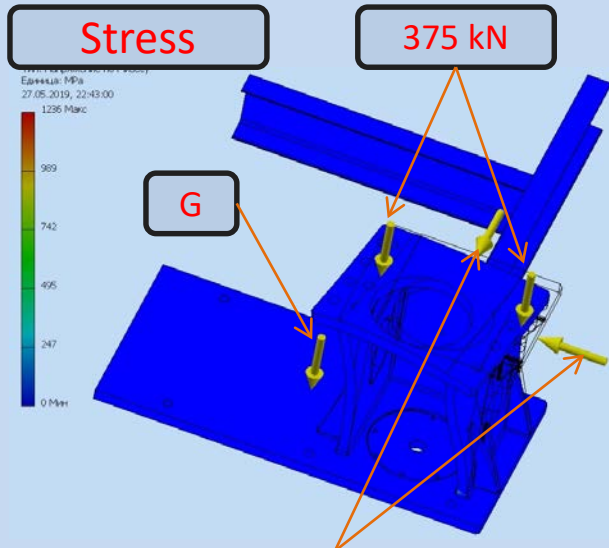
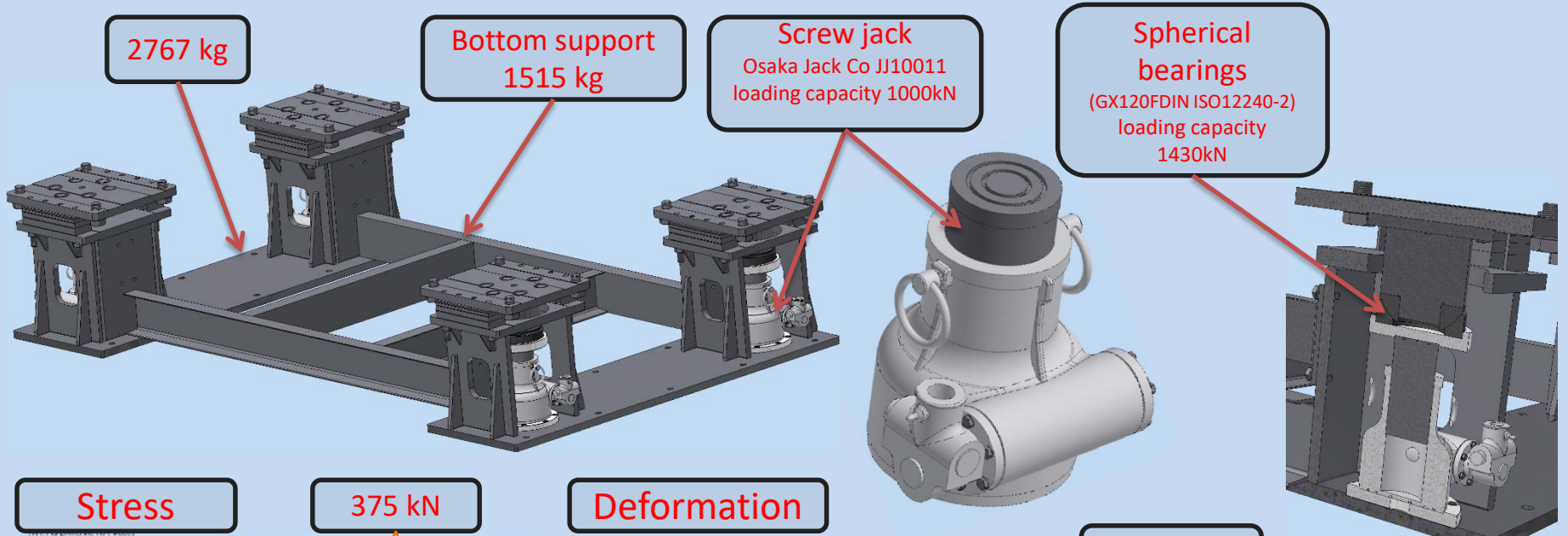
PTFE bearing, lubricated about max. $\mu = 0.04$

The PTFE slidingplates are absolutely corrosion resistant, re-sistant against chemicals and aging. The steel parts of the bearings are by standard sandblasted and provided with a zinc phosphate coating. Upon request, all usual corrosion protection processes are of-fered, including hot galvanizing. Versions made of special steel alloys or stainless steel on request

Fastener strength tablet

class of fasteners			ST-4.6		ST-8.8		A2-70		A4-80	
Thread	d2, мм	Площадь по d2, mm ²	MAX load, N	Work load, kg	MAX load, N	Work load, kg	MAX load, N	Work load, kg	MAX load, N	Work load, kg
M 1	0,8	0,5	121	0	322	10	126	0	151	0
M 2	1,7	2,27	544	20	1 452	70	567	20	681	30
M 3	2,6	5,31	1 274	60	3 396	160	1 327	60	1 592	70
M 4	3,5	9,62	2 308	110	6 154	300	2 404	120	2 885	140
M 5	4,4	15,2	3 647	180	9 726	480	3 799	180	4 559	220
M 6	5,3	22,05	5 292	260	14 112	700	5 513	270	6 615	330
M 8	7,1	39,57	9 497	470	25 326	1 260	9 893	490	11 872	590
M10	8,9	62,18	14 923	740	39 795	1 980	15 545	770	18 654	930
M12	10,7	89,87	21 570	1 070	57 520	2 870	22 469	1 120	26 962	1 340
M14	12,6	124,63	29 910	1 490	79 761	3 980	31 157	1 550	37 388	1 860
M16	14,6	167,33	40 159	2 000	107 092	5 350	41 833	2 090	50 199	2 500
M20	18,3	262,89	63 093	3 150	168 249	8 410	65 722	3 280	78 867	3 940
M24	21,9	376,49	90 359	4 510	240 956	12 040	94 123	4 700	112 948	5 640
M27	24,9	486,71	116 810	5 840	311 493	15 570	121 677	6 080	146 012	7 300
M30	27,6	597,98	143 516	7 170	382 708	19 130	149 495	7 470	179 394	8 960

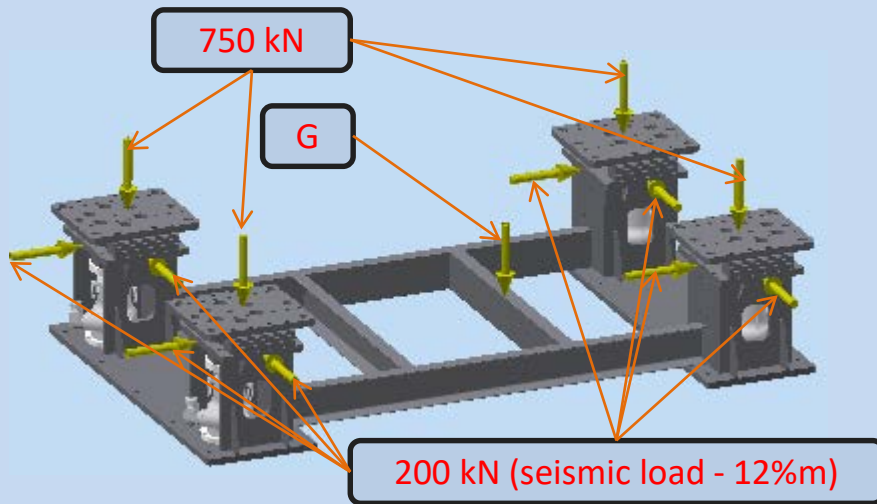
Screw jack Rack : design and calculation



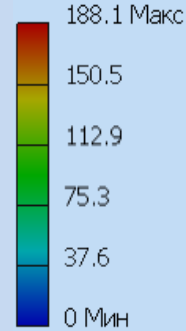
200 kN (seismic load - 12% m)

The bottom support is designed for a load of 200 tons and additionally added seismic hazard (20 tons)

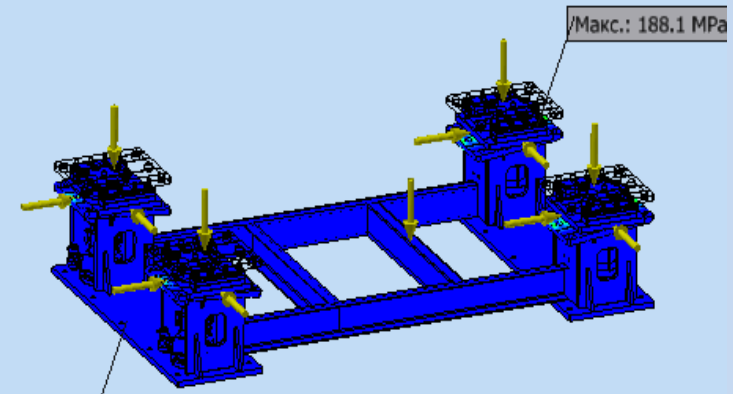
Screw jack Rack : design and calculation



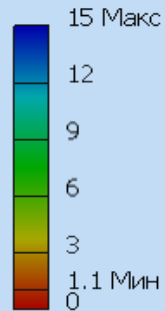
Единица: МПа
15.11.2019, 11:07:18



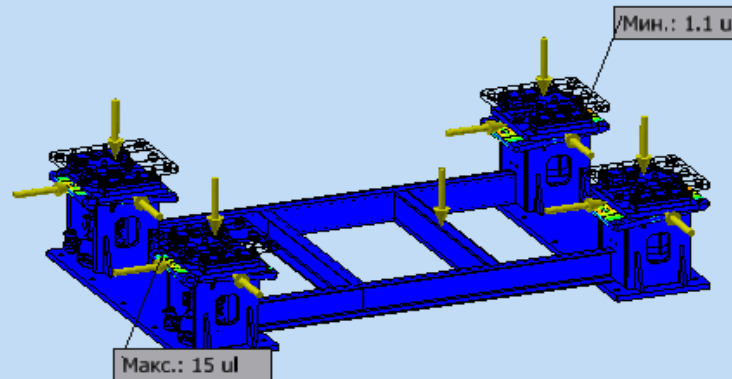
Stress



Единица: ul
15.11.2019, 11:07:35



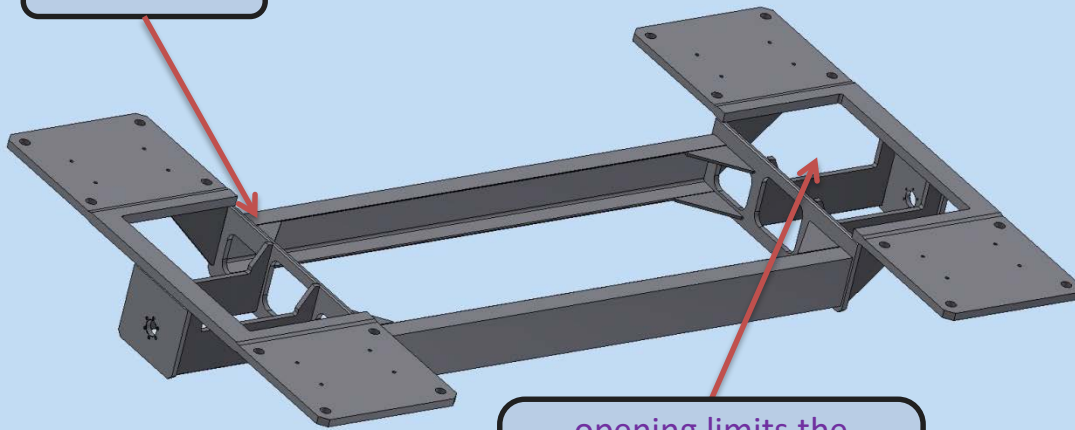
Margin



The bottom support is designed for a load of 200 tons and additionally added seismic hazard (20 tons)

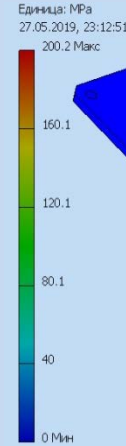
Intermediate frame : design and calculation

644 kg

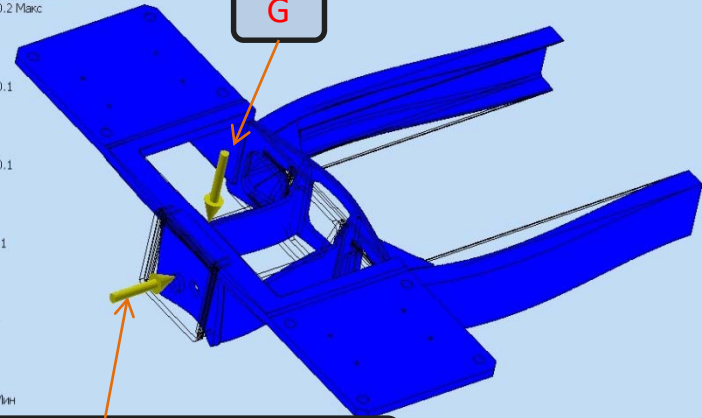


opening limits the movement of the Top frame

Stress

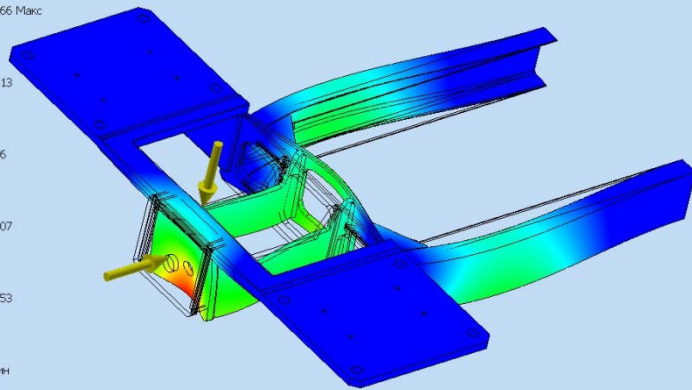
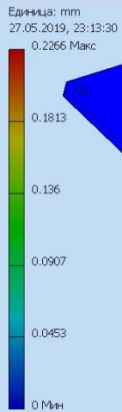


G

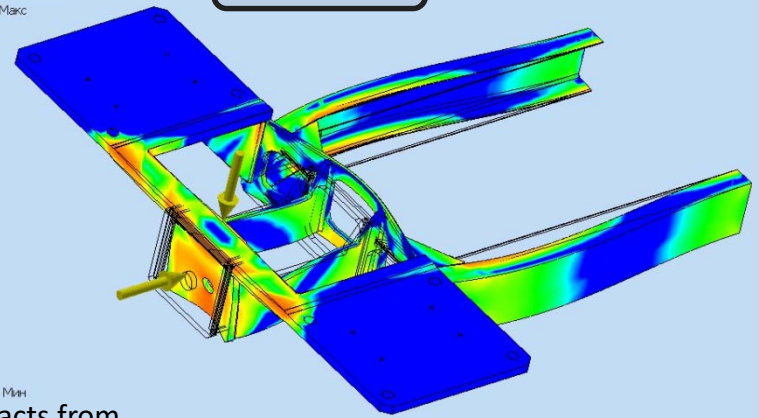


200 kN (seismic load - 12%m)

Deformation

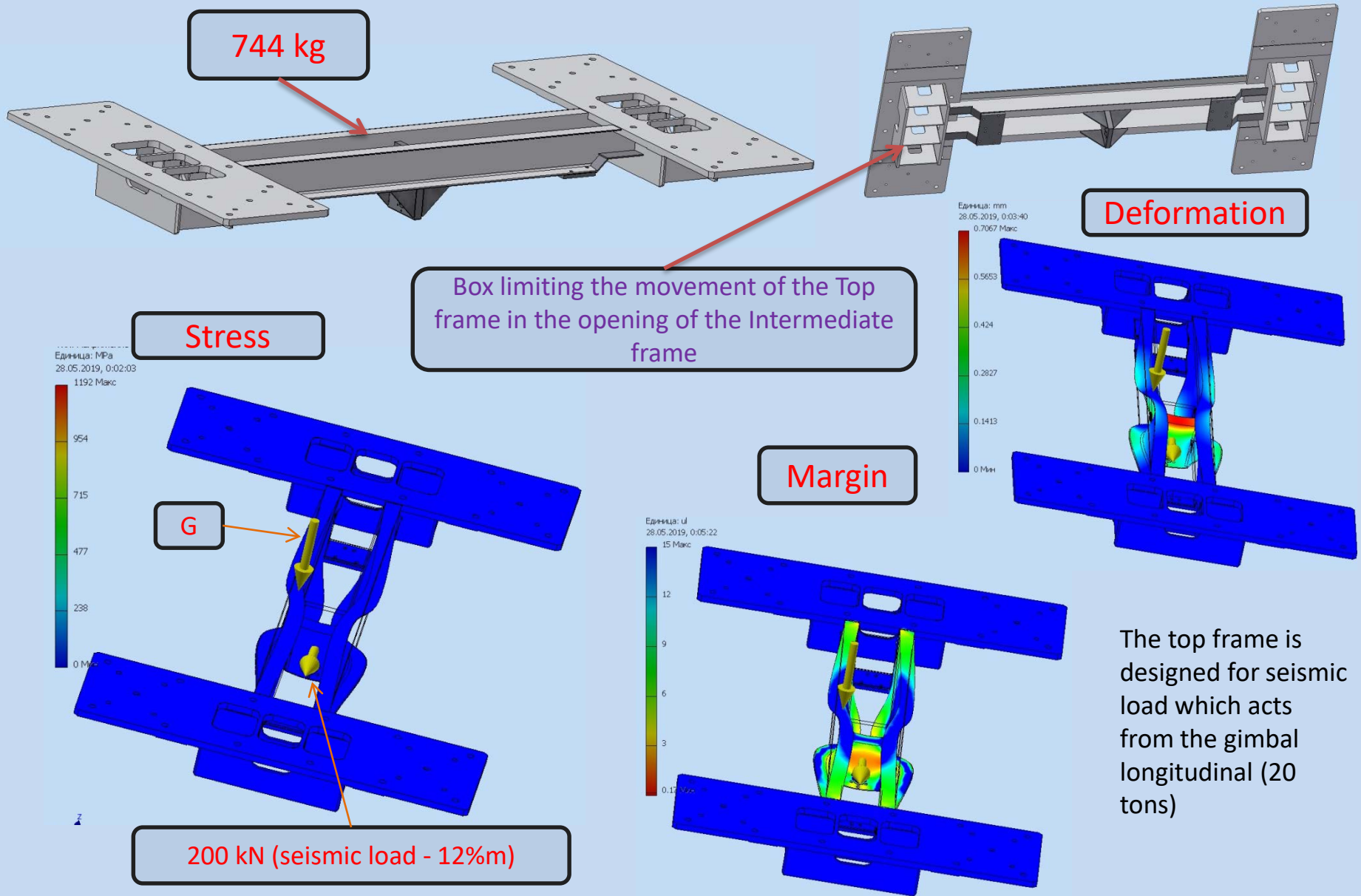


Margin

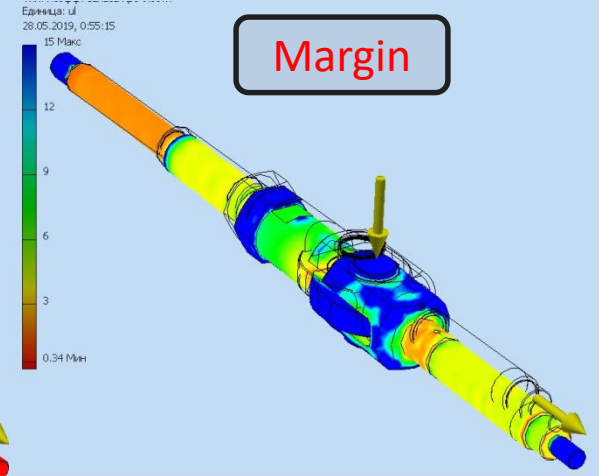
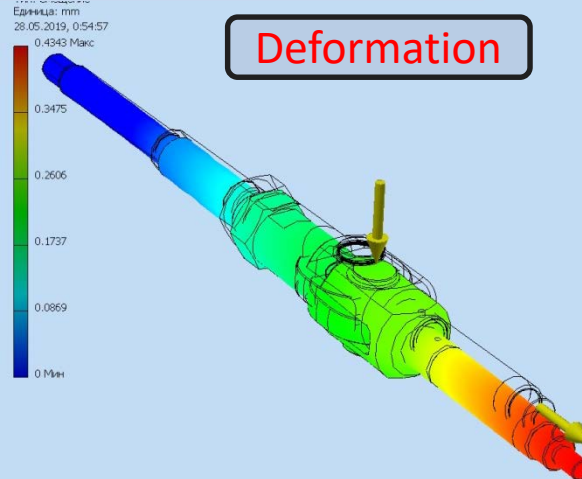
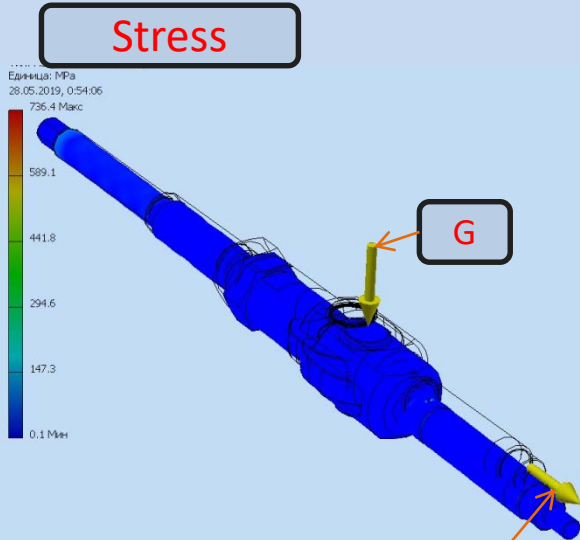
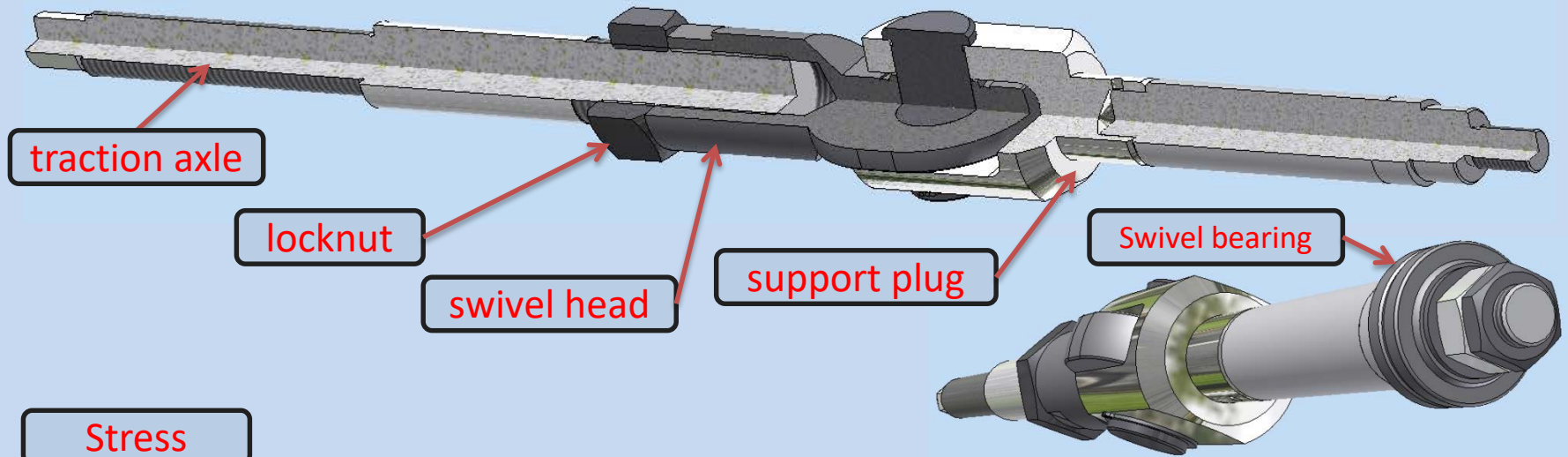


The intermediate frame is designed for seismic load which acts from the gimbal longitudinal (20 tons)

Top frame : design and calculation



Gimbals : design and calculation

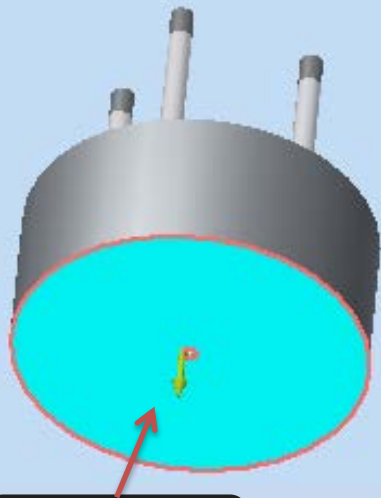


200 kN (seismic load - 12%*m*)

- workload : 50kN
- design load: 200kN

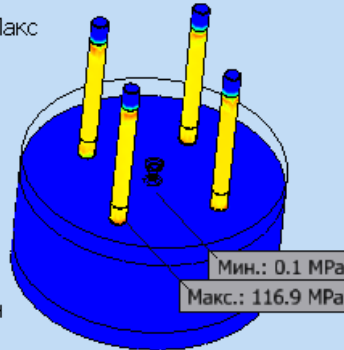
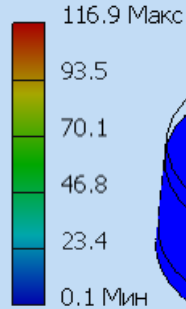
Calculation of studs for Pole CBM magnet

Stress

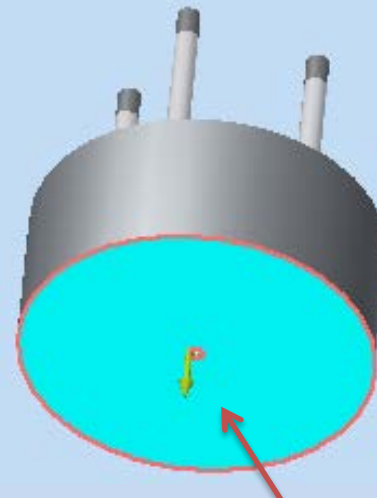


1500000N

Единица: МПа
23.04.2018, 19:27:48

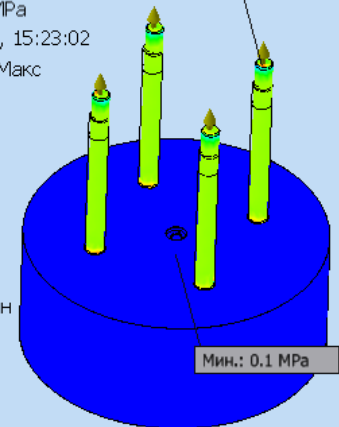
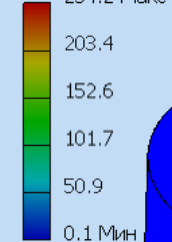


Stress



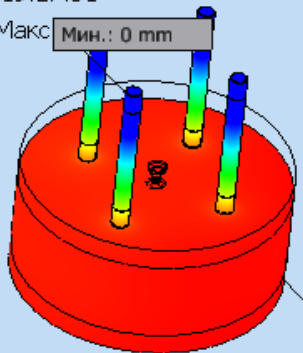
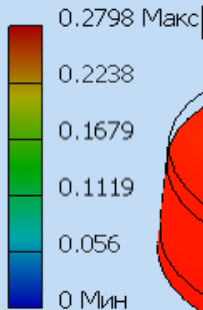
3000000N

Единица: МПа
02.03.2018, 15:23:02



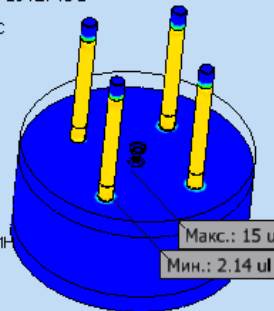
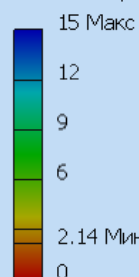
Deformation

Единица: mm
23.04.2018, 19:27:51



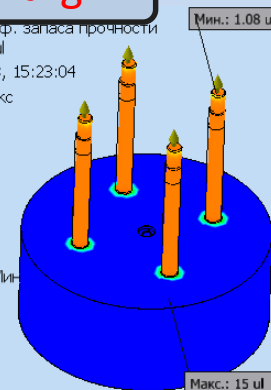
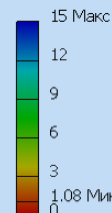
Margin

Единица: ul
23.04.2018, 19:27:51



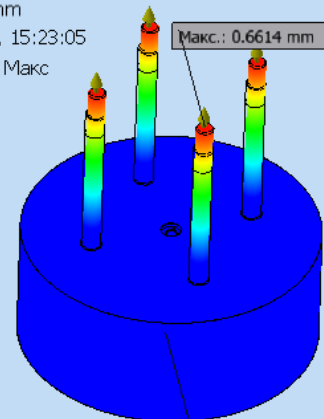
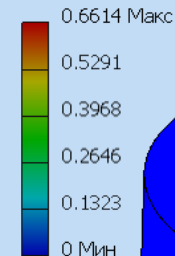
Margin

Тип: Коэфф. запаса прочности
Единица: ul
02.03.2018, 15:23:04

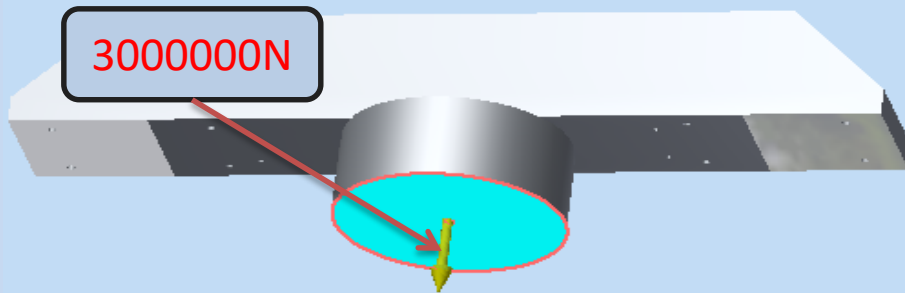


Deformation

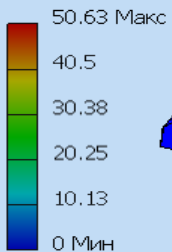
Единица: mm
02.03.2018, 15:23:05



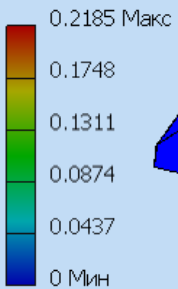
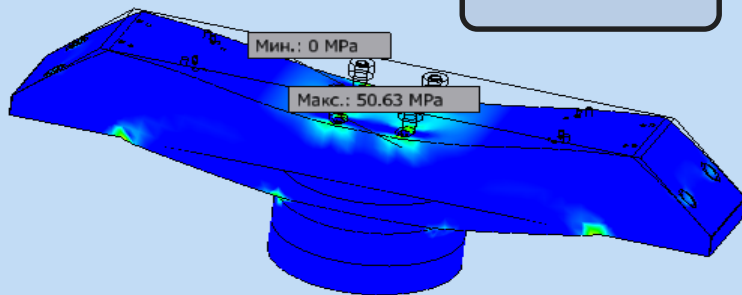
Calculation of Pole & crossbar CBM magnet



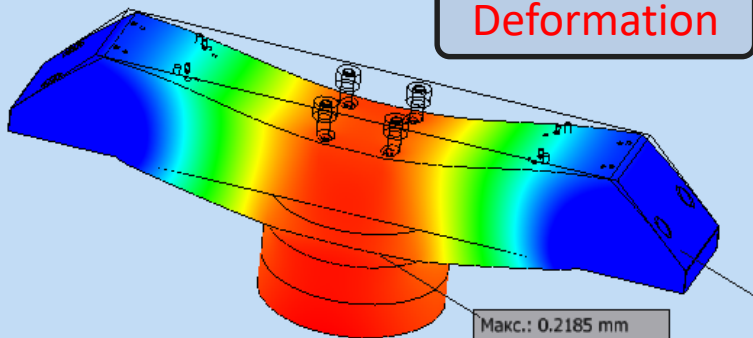
17.04.2018, 16:39:06



Stress



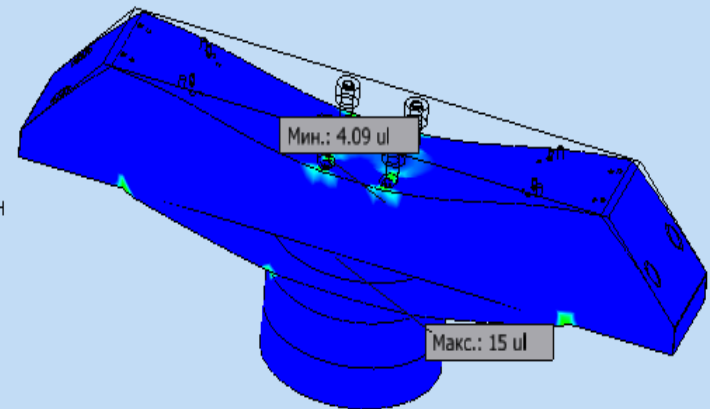
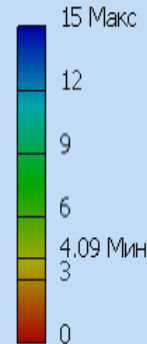
Deformation



Имя	Low carbon steel	
General	Mass density	7.86 г/см ³
	Yield strength	207 МПа
	Ultimate tensile strength	345 МПа
stress	young modulus	220 ГПа
	poisson ratio	0.275 бр
	Shear modulus of elasticity	86.2745 ГПа

Единица: ul
17.04.2018, 16:40:41

Margin





Thank you for your
attention!