

# TRD Manufacturing Room List WWU

TRD Retreat, 28nd March 2019, Schloss Waldthausen  
Lukas Wahmes



# TRD – ROC Manufacturing

## Agenda

- work packages
- work spaces sorted by requirements
- available work spaces at IKP

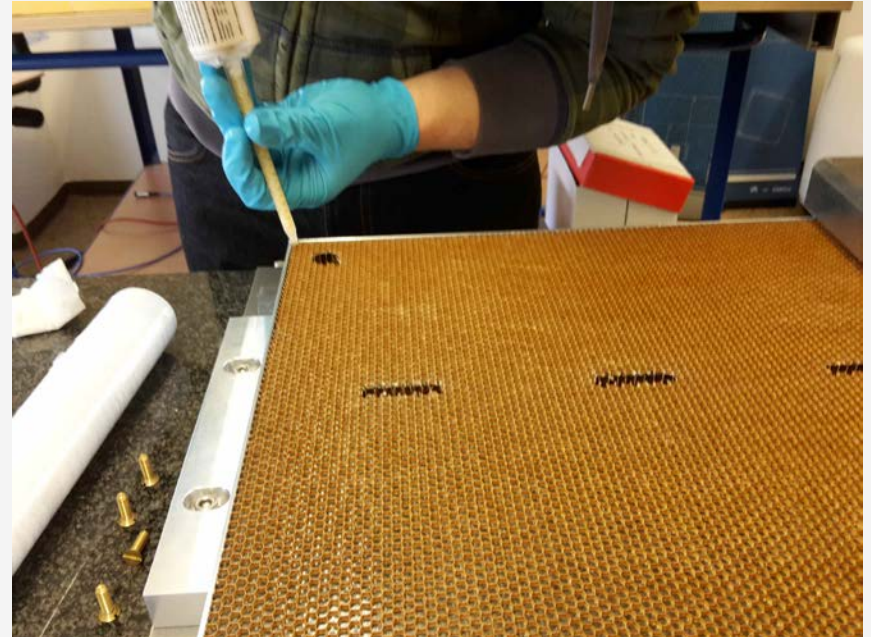
# Requirements for TRD – ROC Manufacturing

Work packages	requirements
1. Assemble honeycomb and post-process backpanel	„normal“
2. Glue padplane and assemble foil window	clean
3. Assemble backpanel	very clean

# Room 1- requirements

For assembling honeycomb and  
post-processing of backpanel:

- atmosphere: no special requirements
- work space: min. 6 m<sup>2</sup>

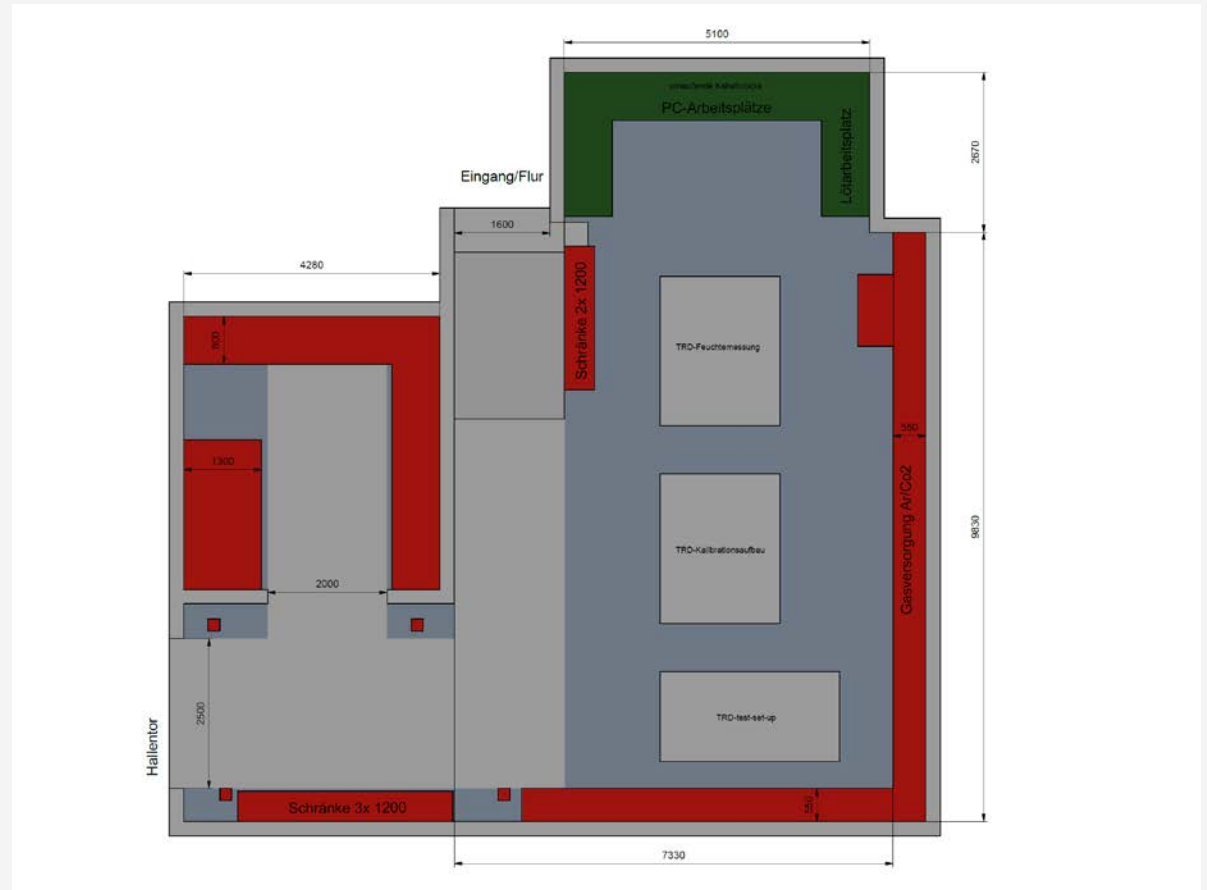


For gluing and filling the honeycomb only little glue is  
needed.

# Room 1- available

## TRD Hall

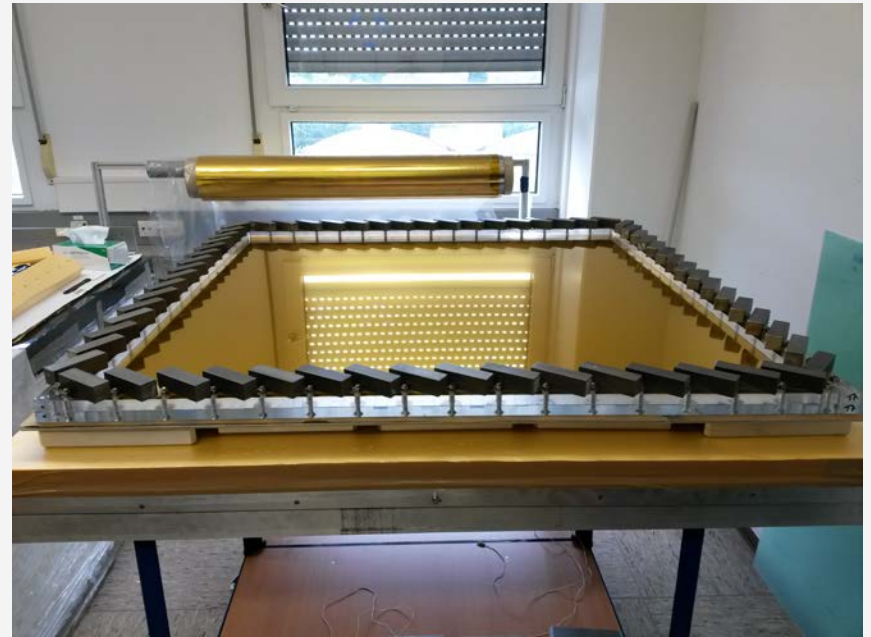
- 20 - 50 m<sup>2</sup>
- 5 m height
- ceiling crane



# Room 2- requirements

For gluing padplane and assembling foil window:

- atmosphere : cleanroom ISO 7
- workspace : min. 8 m<sup>2</sup>

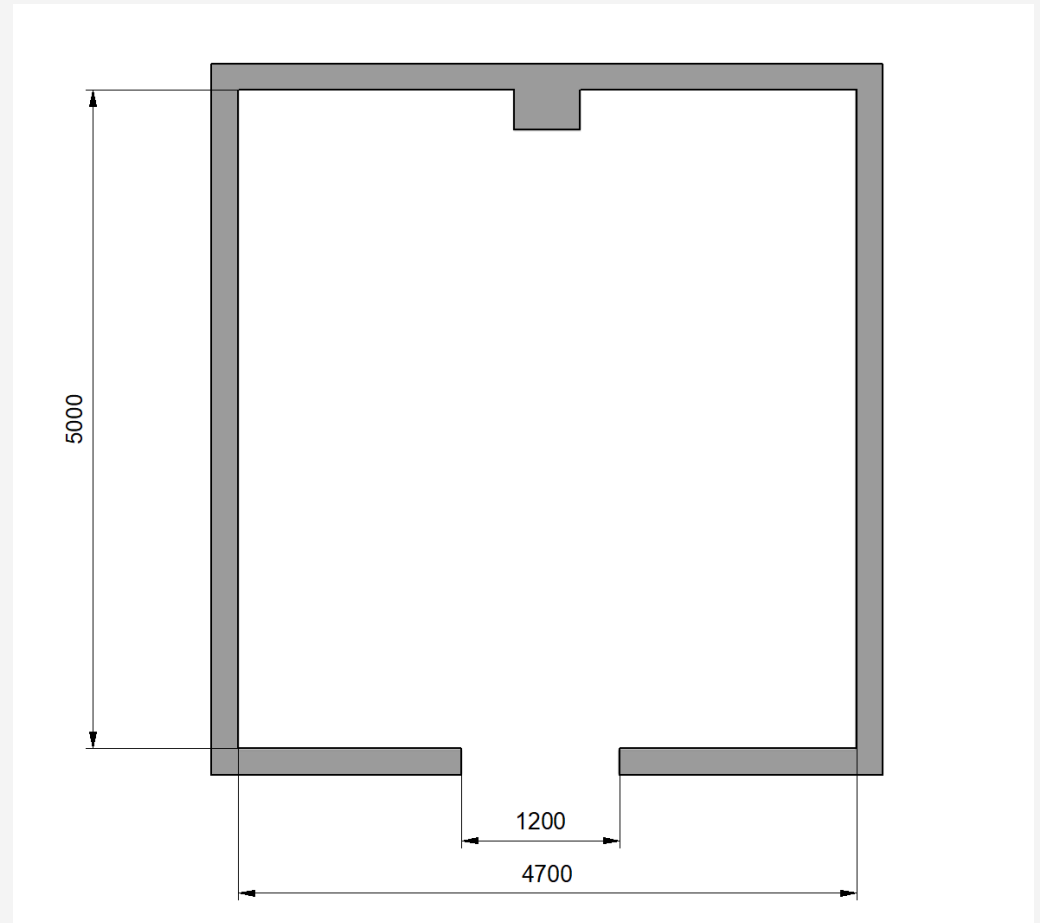


A clean environment prevents unevenness in the foil window.

# Room 2- available

R 18

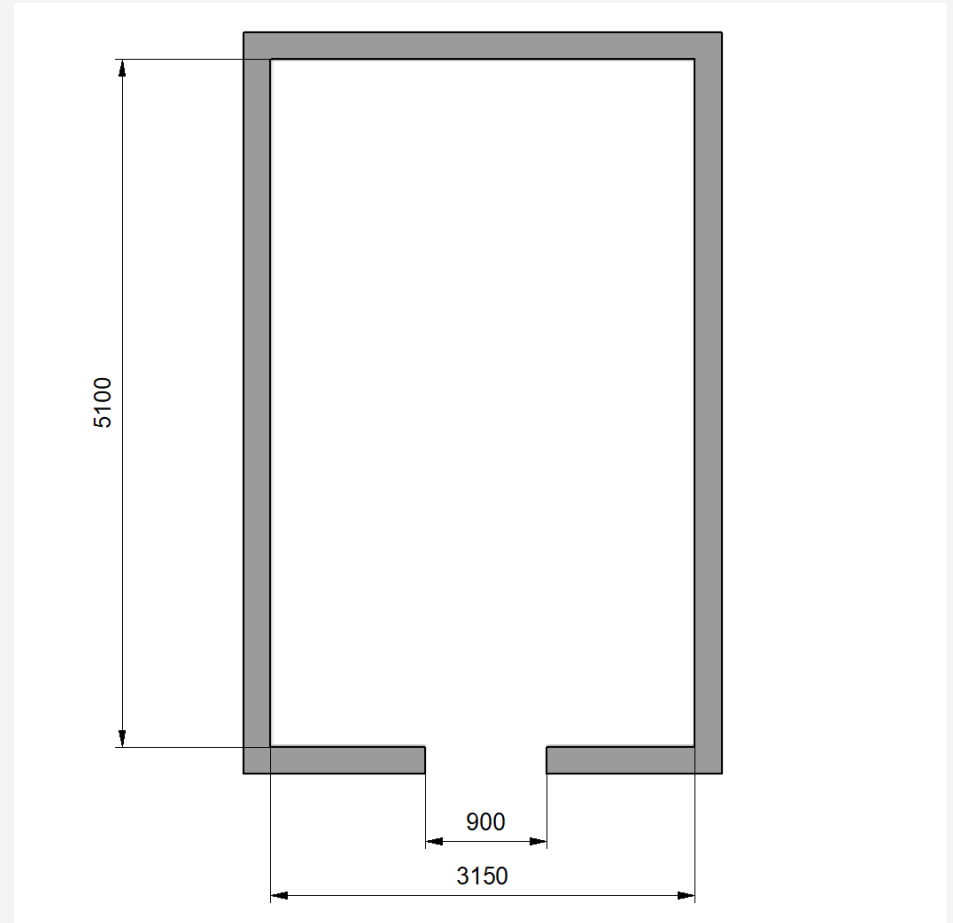
- 23,5 m<sup>2</sup>
- 3 m height
- no cleanroom yet



# Room 2- available

R 217

- 16 m<sup>2</sup>
- 3 m height
- no cleanroom yet

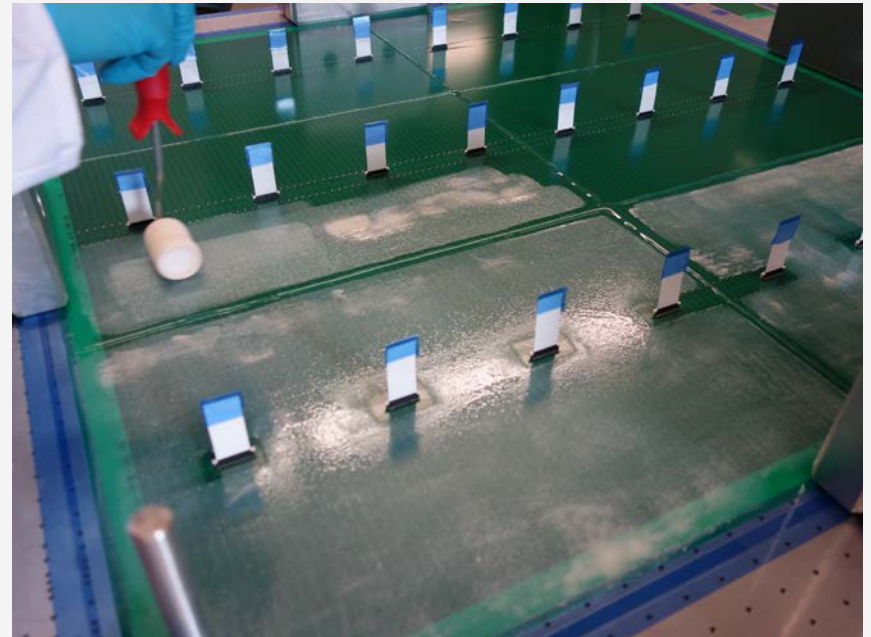




# Room 3- requirements

For assembling backpanel :

- atmosphere:
  - cleanroom ISO 6-7
  - temp. 23- 30°C
  - humidity < 30%
- workspace :      min. 9 m<sup>2</sup>

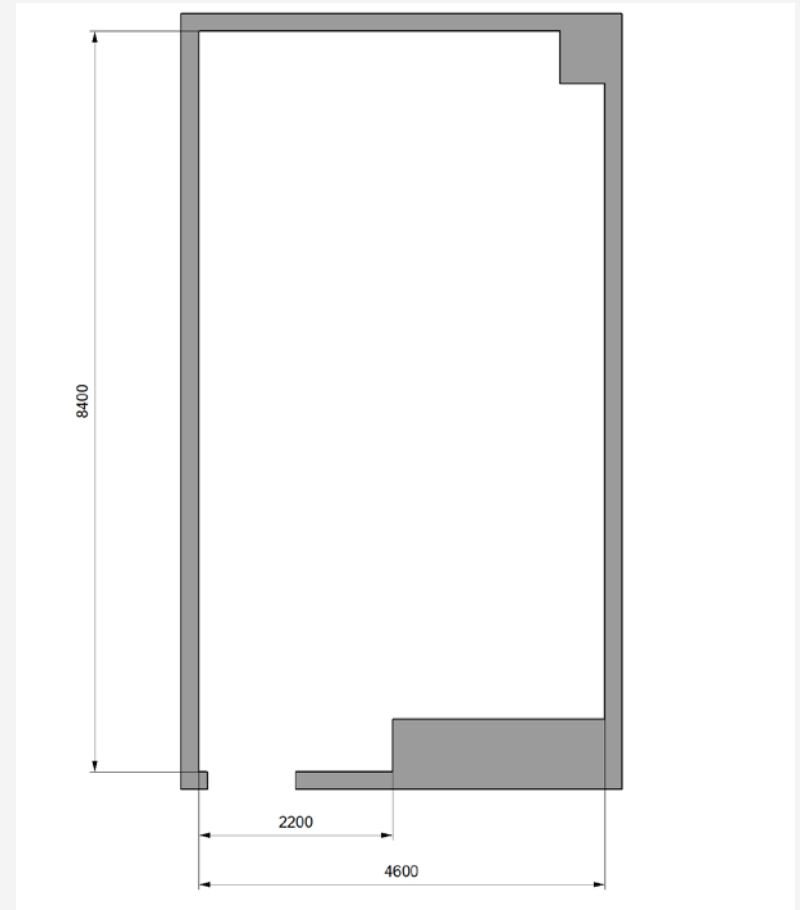


Large amounts of glue are needed for joining honeycomb and padplane.

# Room 3- available

R 507

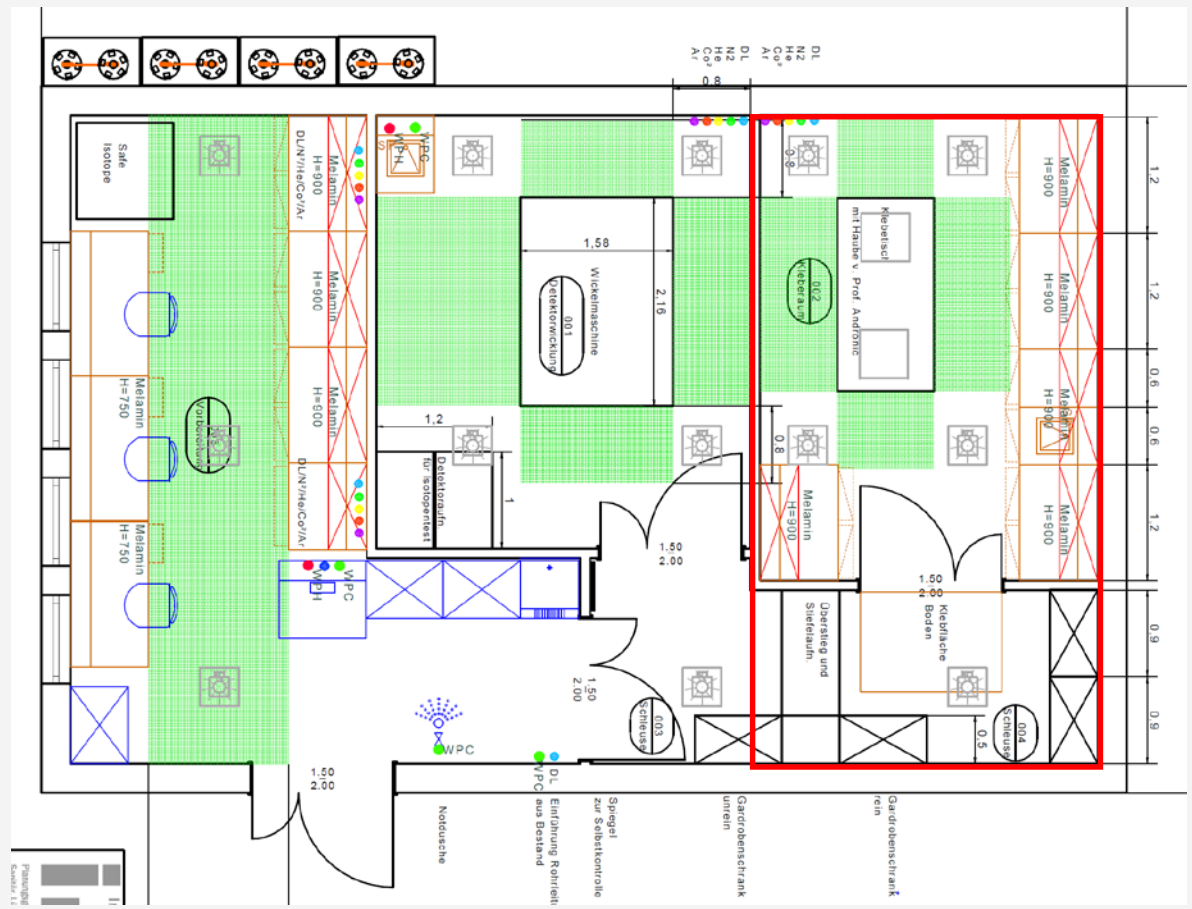
- 37 m<sup>2</sup>
- 3 m height
- cleanroom conditions under a hood



# Room 3- available

Container cleanroom

- 17 m<sup>2</sup>
- cleanroom ISO 5
- controlled temperature and humidity



# Thank you, for your attention!