



Forward Endcap EMC Mechanics Issues

PANDA Collaboration Meeting 18/1, GSI, March 6, 2018

Thomas Held

Ruhr-Universität Bochum
Institut für Experimentalphysik I

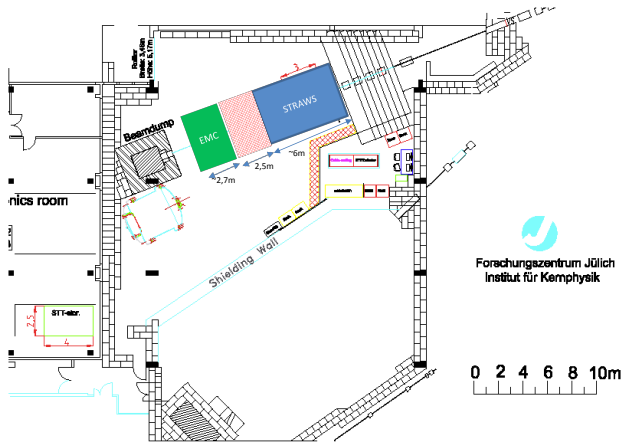
Preassembly Support Pedestal

- Delivered to Jülich in January

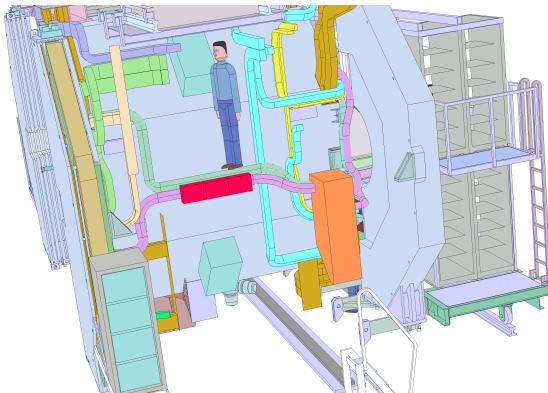
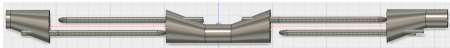


Preassembly Support Pedestal

- Mounting position \neq operation position

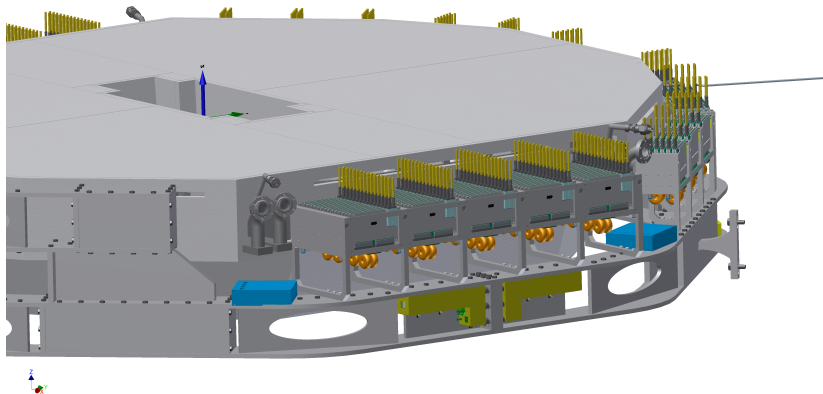


Position of Temperature Regulators (Heaters)?



Disk DIRC Cabling Conflicts

- Query from Disk DIRC people on modification of SADC crates

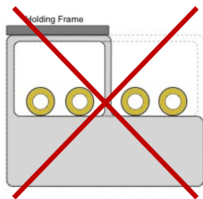


Disk DIRC Cabling Conflicts

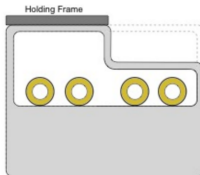
■ Suggestions made by Disk DIRC group (Erik)

Possible Solutions

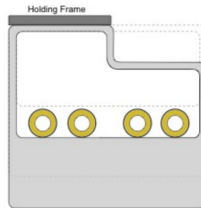
- previously the plan was to place the HV-dividers which do not fit on top of a ROM further outside in the region with 242 mm space along z
- new constraints take away large regions also for guiding cables and cooling
- more space is needed for the EDD!



ruled out by EMC group



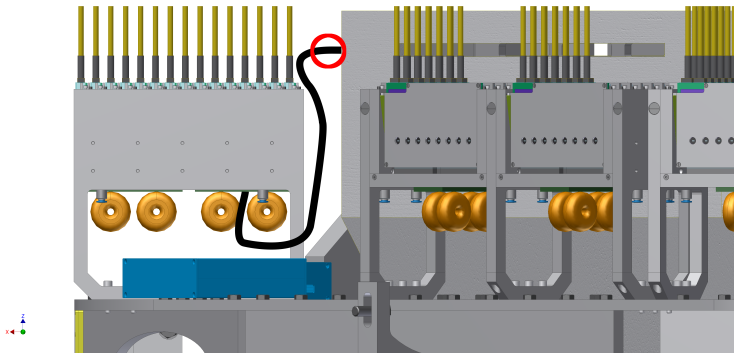
???



???

Disk DIRC Cabling Conflicts

- All space behind SADC backplane PCB needed for cabling (occupied, mountability)
- SADC crate height corresponding to electronics frame cable outlet (bending radii, stiff glued section)



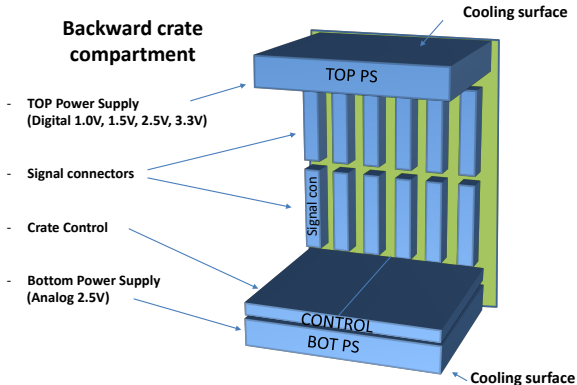
Disk DIRC Cabling Conflicts

- More realistic occupancy of SADC crate backplane space



UPPSALA
UNIVERSITET

ADC for EMC-Endcap - Crate backplane preparation



Pawel Marciniewski, PANDA Collaboration Meeting, GSI 05.04.18

Muon Counter Attachment?

Forward Endcap EMC

seen in upstream direction

