

STRAWS AND EMC JOINT TESTS

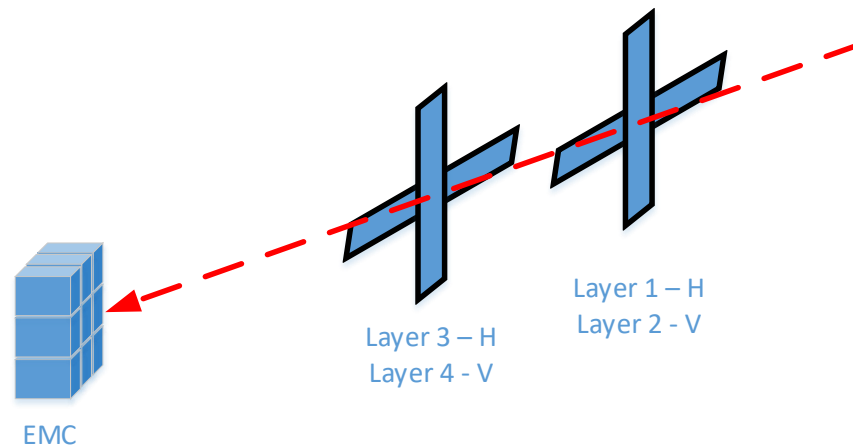
GRZEGORZ KORCYL

Goals

- First mini-PANDA prototype
 - 2 independent subsystems
 - SODANet synchronization
 - Burst-building and filtering on Compute Nodes
- Framework for development of online-tracking on straws
- Evaluation of straws modules

Detector setup

- Straws
 - 4 layer: 2 horizontal, 2 vertical
 - Each layer has 2 modules
 - Each module has 32 straws
 - 256 straws in total
- EMC
 - 3x3 crystals



Many thanks to
Jerzy Smyrski and
Bartek Korzeniak for
straws preparation!

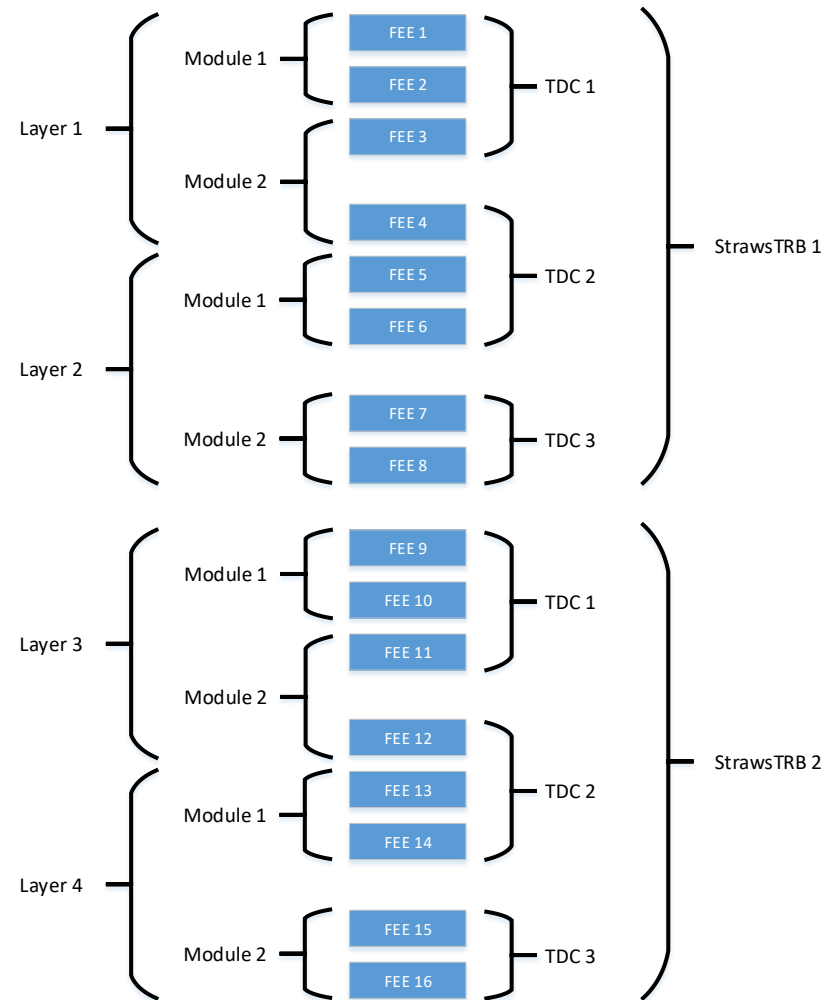
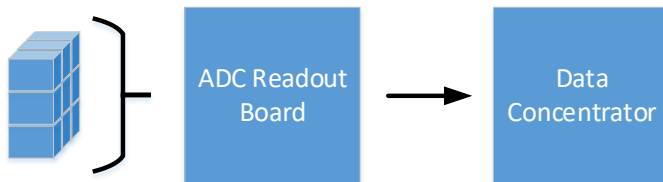
Readout setup

□ Straws

- 16x PASTTREC FEE cards
- 2x TRBs

□ EMC

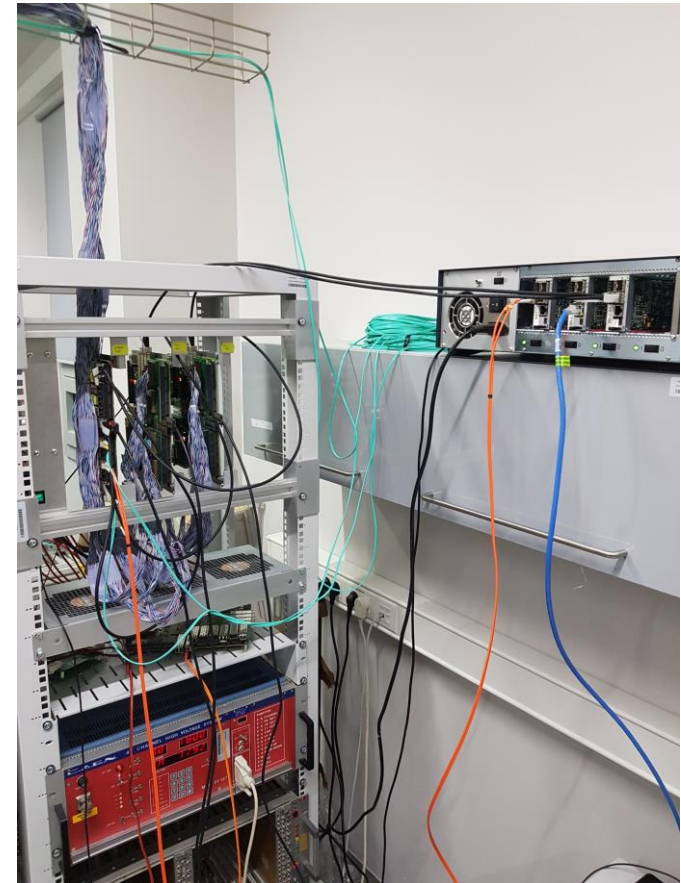
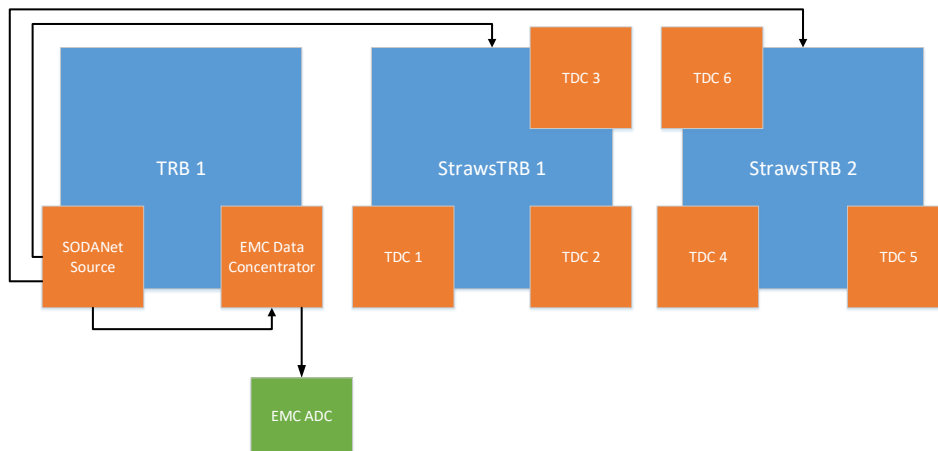
- EMC ADC card
- Data Concentrator



SODANet synchronization

- 3x TRBs
 - TRB1:
 - Slow control Gateway
 - SODANet Source
 - EMC Data Concentrator

 - StrawsTRB1 and 2
 - TDCs for PASTTREC readout
 - Central FPGA as SODANet receiver and local HUB



Burst building

□ Data sources:

□ EMC

- 1x Optical link 2Gb, 8/10b
- Output from the EMC Data Concentrator

□ Straws

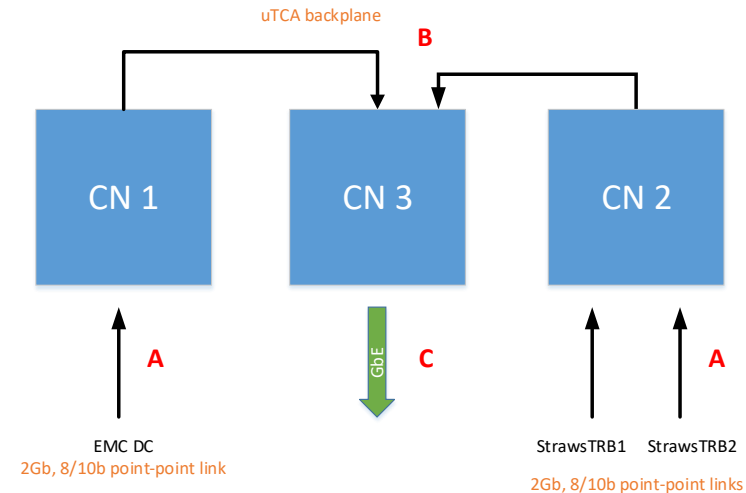
- Each StrawsTRB
 - 1x Optical link 2Gb, 8/10b
 - 1x Optical link Gigabit Ethernet (mirrored)

□ Compute Nodes:

- CN1: receives data from EMC DC and forwards to CN3 through backplane
- CN2: receives and merges data from StrawsTRB1 and StrawsTRB2, forwards to CN3 through backplane
- CN3: receives and merges data from CN1 and CN2, sends out to storage through Gigabit Ethernet

□ Additional Straws burst building

- Standard event builder on PC from direct GbE data

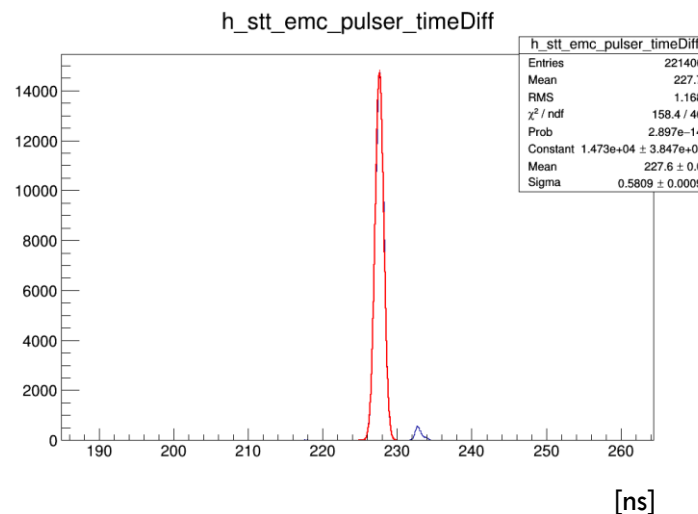


Work progress

- Day 1
 - ▣ Detectors up and running
- Day 2
 - ▣ Individual readout subsystems up and running
- Day 3
 - ▣ Synchronized subsystems up and running

First test - pulser

- Pulser supplied to:
 - LED located in EMC box
 - TDC channel of StrawsTRB1
- Verification of proper SODANet synchronization
- Verification of proper Burst-Building
- Verification of custom data unpacker
- Pulser visible in the same bursts with 0.5ns resolution (raw data, no calibration)



Second test – cosmic run

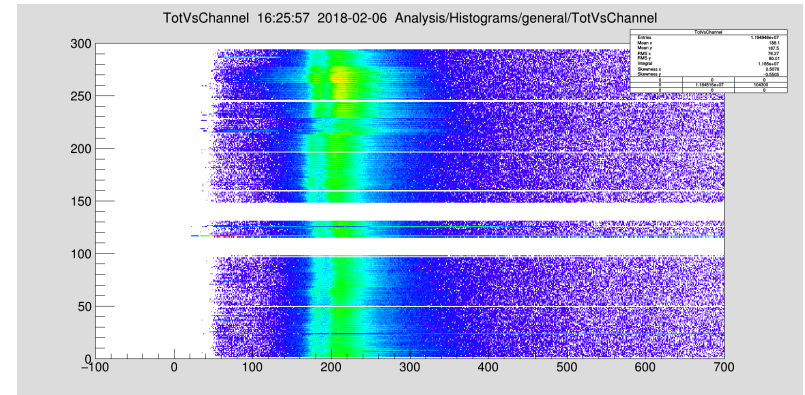
- 1.5h of cosmic data collected
 - ▣ Straws FEE not calibrated
- Run for development and evaluation of analysis software
- Development in progress

Further plans

- Straws calibration
 - DONE

- Analysis:
 - Straws – EMC correlations
 - IN PROGRESS
 - Software tracking

- HW Processing:
 - Development of the tracking firmware on intermediate board



Many thanks to
Akshay and Narendra
for calibration!